

LOC I-UXI 108.3	APP CRS 317°	Rwy Idg 9002
		TDZE 28
		Apt Elev 29

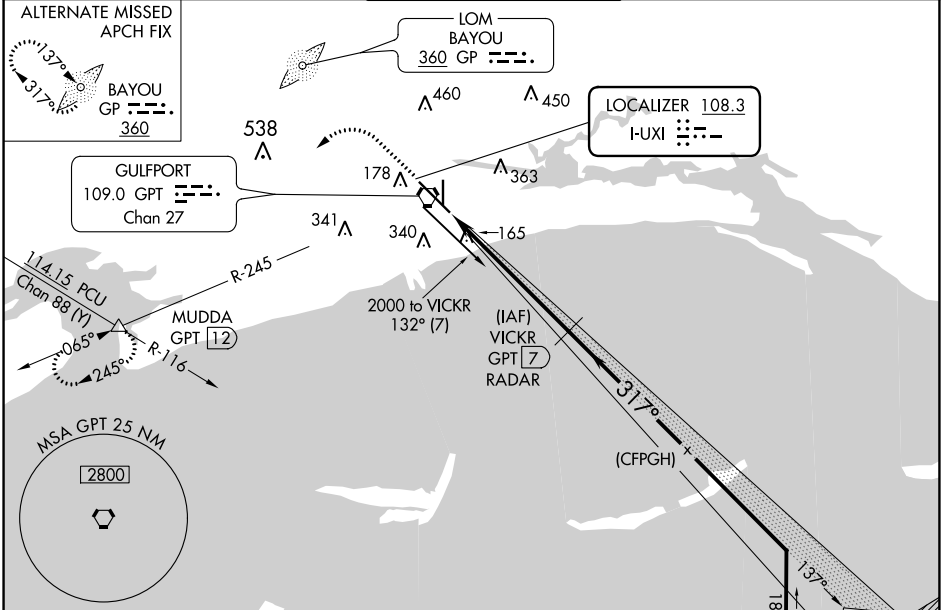
ILS Z or LOC Z RWY 32

GULFPORT-BILOXI INTL (GPT)

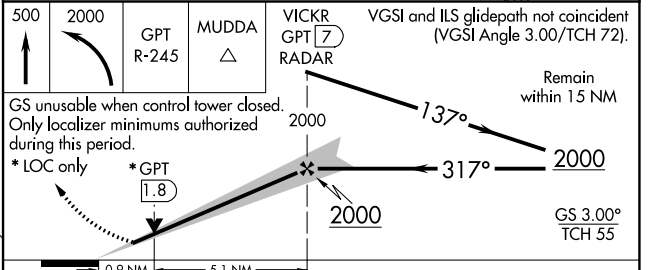
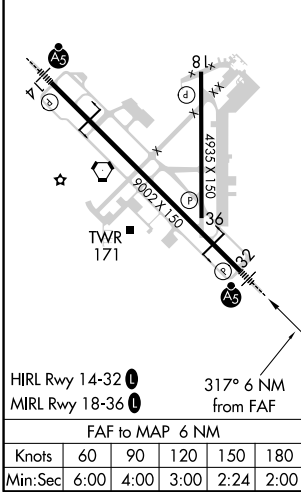
ASR DME from GPT VORTAC. Simultaneous reception of I-UXI and GPT DME required. DME or RADAR required, except DME required when control tower closed. For inop ALS, increase S-ILS 32 Cat E visibility to RVR 4000 and S-LOC 32 Cat C/D/E visibility to RVR 5500.
**** RVR 1800 authorized with use of FD or AP or HUD to DA.**

MALSR MISSIE APPROACH: Climb to 500 then climbing left turn to 2000 on GPT VORTAC R-245 to MUDDA INT/GPT 12 DME and hold.

ATIS 119.45	GULFPORT APP CON * 127.5 254.25	GULFPORT TOWER * 123.7 (CTAF) 0 339.8	GND CON 120.4 348.6	UNICOM 122.95
-----------------------	---	---	-------------------------------	-------------------------



ELEV 29	TDZE 28
---------	---------



500	2000	GPT R-245	MUDDA	VICKR GPT 7 RADAR	VGSI and ILS glidepath not coincident (VGSI Angle 3.00/TCH 72).
GS unusable when control tower closed. Only localizer minimums authorized during this period.					Remain within 15 NM
*LOC only					2000
*GPT 1.8					317°
					2000
					GS 3.00° TCH 55
CATEGORY	A	B	C	D	E
S-ILS 32 **	228/24 200 (200-½)				
S-LOC 32	380/24	352 (400-½)	380/30	352 (400-¾)	
CIRCLING	500-1	640-1	820-2¼	820-2½	820-2¾
	471 (500-1)	611 (700-1)	791 (800-2¼)	791 (800-2½)	791 (800-2¾)

SC-4, 31 DEC 2020 to 28 JAN 2021

SC-4, 31 DEC 2020 to 28 JAN 2021