

WAAS CH 56207 W32A	APP CRS 317°	Rwy Idg 9002 TDZE 28 Apt Elev 29
---------------------------------	------------------------	---

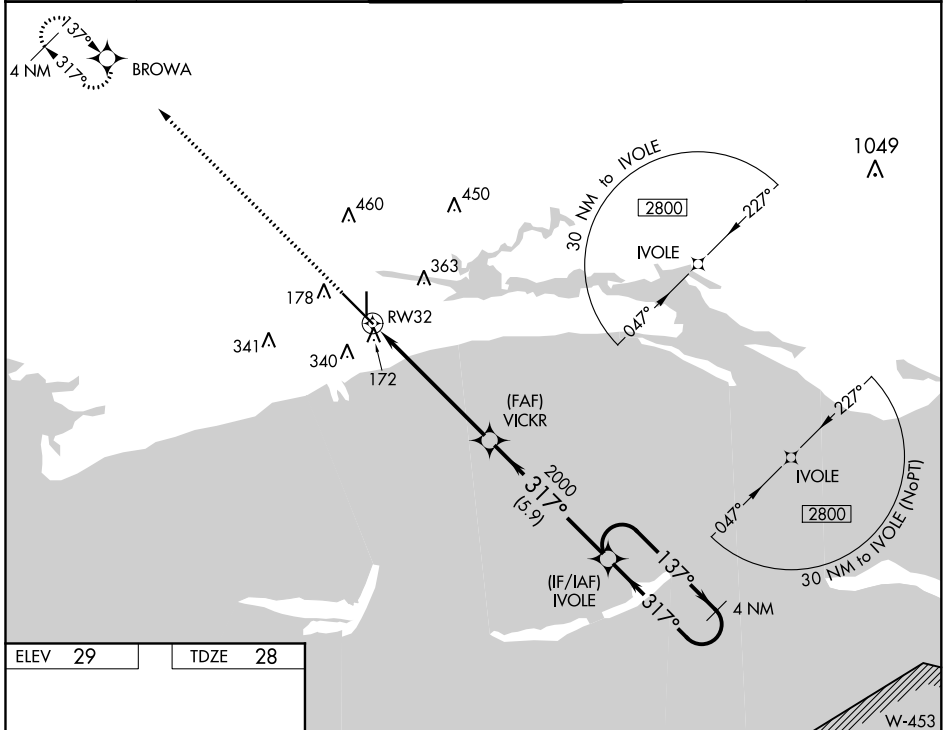
RNAV (GPS) RWY 32

GULFPORT-BILOXI INTL (GPT)

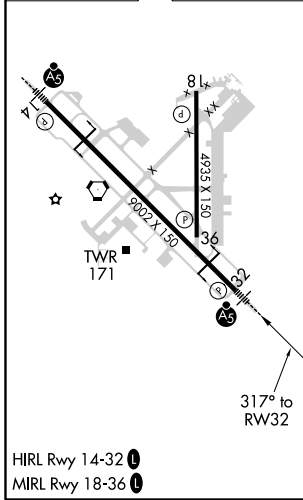
⚠ For uncompensated Baro-VNAV systems, LNAV/VNAV NA below -3°C (27°F) or above 54°C (130°F). DME/DME RNP-0.3 NA. For inop ALS, increase LNAV/VNAV all Cats visibility to 1 $\frac{3}{4}$ SM and LNAV Cat C/D to RVR 6000. # RVR 1800 authorized with use of FD or AP or HUD to DA.

MALS MISSED APPROACH: Climb to 2000 direct BROWA and hold.

ATIS 119.45	GULFPORT APP CON * 127.5 254.25	GULFPORT TOWER * 123.7 (CTAF) 0 339.8	GND CON 120.4 348.6	UNICOM 122.95
-----------------------	---	---	-------------------------------	-------------------------



ELEV 29	TDZE 28
---------	---------



HIRL Rwy 14-32
MIRL Rwy 18-36

2000	BROWA	VGSI and RNAV glidepath not coincident (VGSI Angle 3.00/TCH 72).	4 NM Holding Pattern
* LNAV only.			
CATEGORY	A	B	C
LPV DA #		228/24	200 (200- $\frac{1}{2}$)
LNAV/DA		446/50	418 (500-1)
LNAV MDA		440/24	412 (500- $\frac{1}{2}$)
CIRCLING	500-1 471 (500-1)	640-1 611 (700-1)	820-2 $\frac{1}{4}$ 791 (800-2 $\frac{1}{4}$)
			820-2 $\frac{1}{2}$ 791 (800-2 $\frac{1}{2}$)

SC-4, 31 DEC 2020 to 28 JAN 2021

SC-4, 31 DEC 2020 to 28 JAN 2021