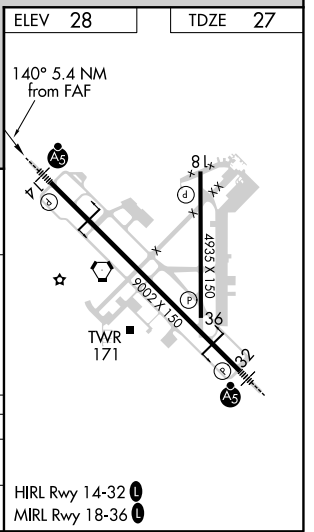
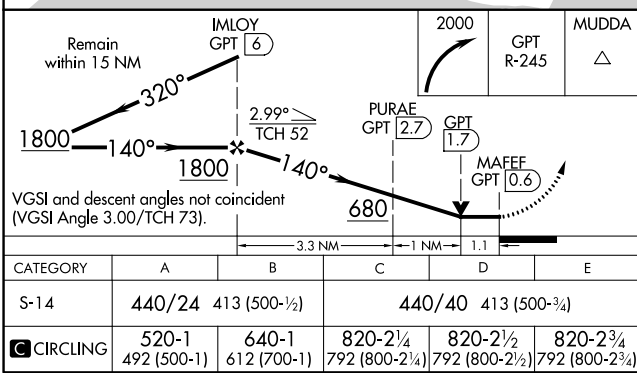
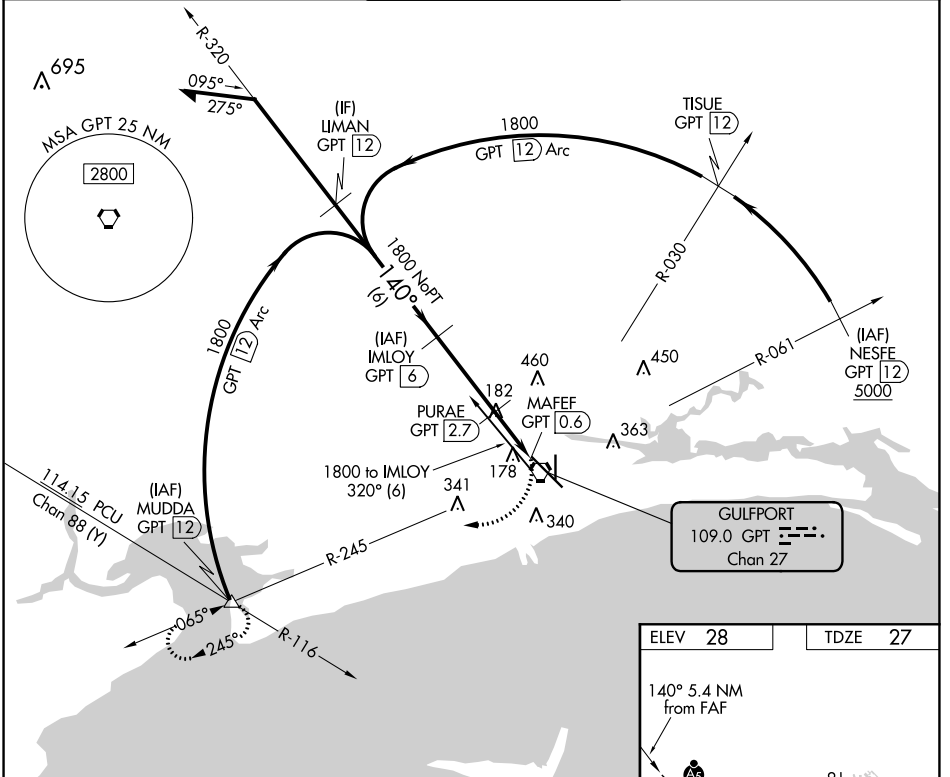


| | | | |
|--|------------------------|---|-------------|
| VORTAC GPT 109.0 Chan 27 | APP CRS 140° | Rwy Idg TDZE 27 Apt Elev 28 | 9002 |
|--|------------------------|---|-------------|

VOR Z or TACAN Z RWY 14

GULFPORT-BILOXI INTL (GPT)

| | | | | | |
|--|---|---|--|--|-------------------------|
| DME required. | | MALSR | | MISSED APPROACH: Climbing right turn to 2000 on GPT VORTAC R-245 to MUDDA INT/12 DME and hold. | |
| <p>For inop ALS, increase S-14 Cat C/D/E visibility to RVR 6000.</p> | | | | | |
| ATIS 119.45 | GULFPORT APP CON * 127.5 254.25 | GULFPORT TOWER * 123.7 (CTAF) 0 339.8 | | GND CON 120.4 348.6 | UNICOM 122.95 |



SC-4, 31 DEC 2020 to 28 JAN 2021

SC-4, 31 DEC 2020 to 28 JAN 2021