

MILTON, FLORIDA

ILS Y or LOC/DME RWY 14

LOC/DME I-NSE 111.75 Chan 54(Y)	APCH CRS 139°	Rwy ldg TDZE Arprt Elev 6001 199 199
---	-------------------------	--

AL-602 [USN]

WHITING FLD NAS - NORTH (KNSE)

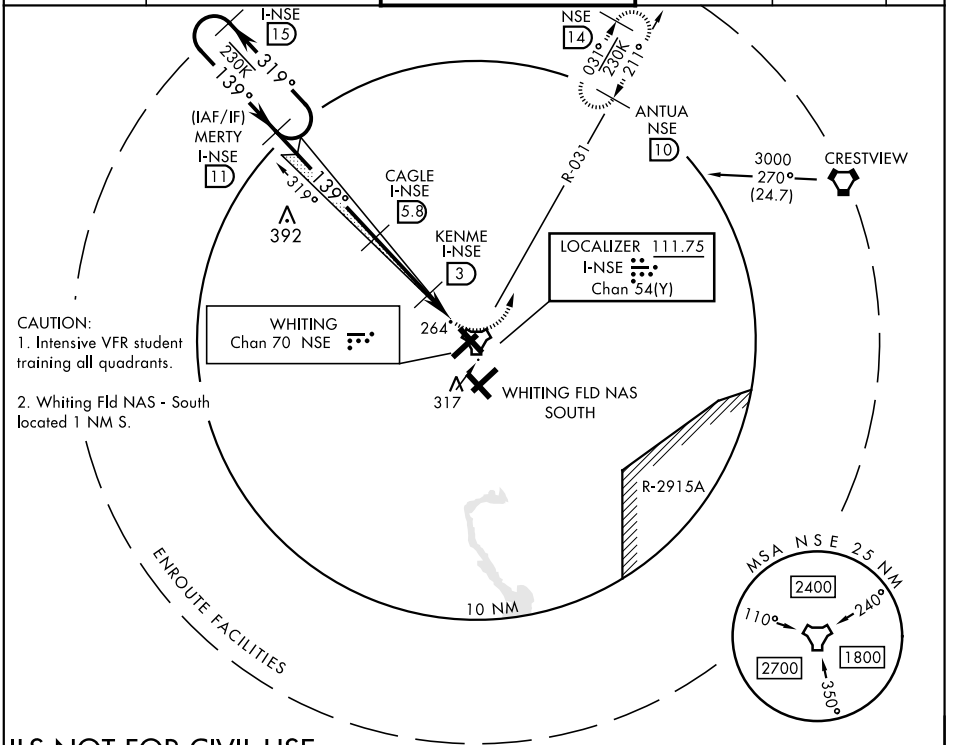
TACAN required.

- ▼ * When ALS inop, increase vis to ¾ mile.
- ** When ALS inop, increase vis to 1 mile.
- *** Circling not authorized in sector SE of Rwy 5-23 and SW of Rwy 14-32.



MISSED APPROACH: Climb to 700. Then climbing left turn to 3000. Intercept NSE TACAN R-031 to ANTUA and hold. Continue climb in hold. Contact Pensacola APP CON.

ATIS * 290.325	PENSACOLA APP CON 127.35 278.8	NORTH WHITING TOWER * 121.4 306.925	GND CON 251.15	CLNC DEL 257.775	ASR
--------------------------	--	---	--------------------------	----------------------------	-----



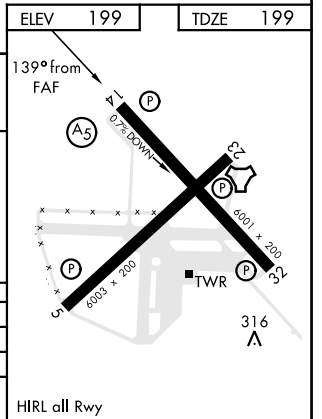
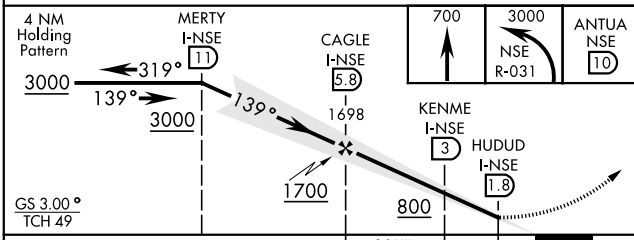
- CAUTION:
- Intensive VFR student training all quadrants.
 - Whiting Fld NAS - South located 1 NM S.

SE-3, 31 DEC 2020 to 28 JAN 2021

SE-3, 31 DEC 2020 to 28 JAN 2021

ILS NOT FOR CIVIL USE

EMERG SAFE ALT 100 NM 3500



CATEGORY	A	B	C	D
S-ILS 14 *	424-½	225	(300-½)	
S-LOC 14 **	520-½	321	(400-½)	
*** CIRCLING	600-1 401 (500-1)	660-1 461 (500-1)	660-1½ 461 (500-1½)	760-2 561 (600-2)

MILTON, FLORIDA
Amdt 3 10SEP20

30° 43' N-87° 01' W

WHITING FLD NAS - NORTH (KNSE)

ILS Y or LOC/DME RWY 14