

ILS Z or RNAV (GPS) RWY 14

LOC I-NSE 111.75	APCH CRS 139°	Rwy ldg TDZE Arprt Elev 6001 199 199
----------------------------	-------------------------	--

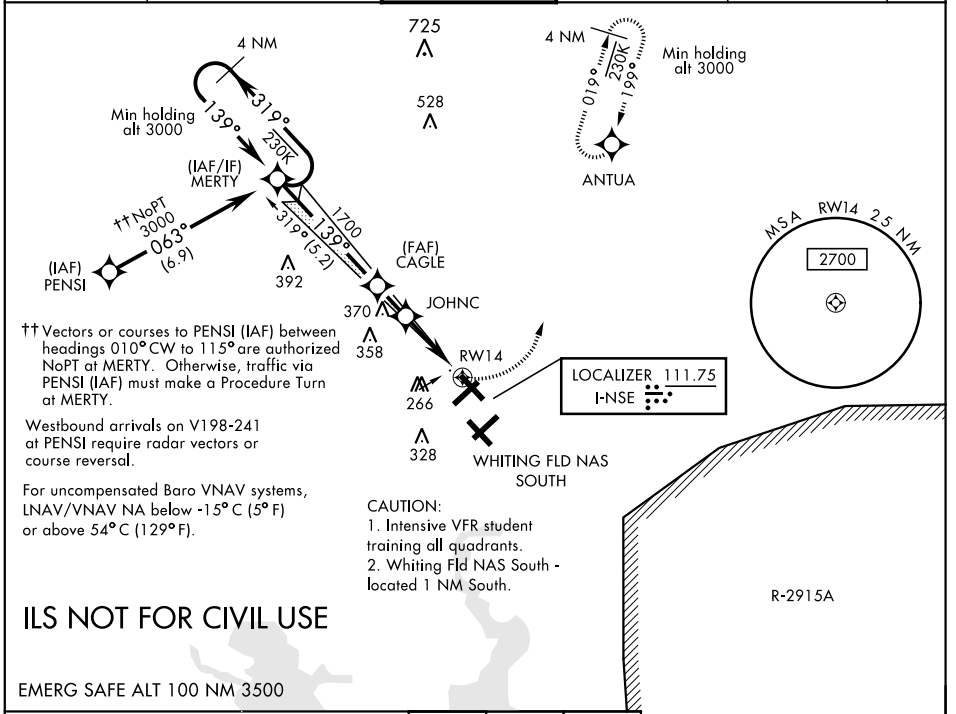
AL-602 [USN]

WHITING FLD NAS - NORTH (KNSE)

RNAV1 - GPS for ILS.
RNP APCH for LNAV/VNAV, LNAV.
 ▼ * When ALS inop, increase vis to ¾ mile.
 ** When ALS inop, increase vis to 1 mile.
 *** Circling not authorized in sector SE of Rwy 5-23 and SW of Rwy 14-32.

MALSRS (A5) MISSED APPROACH: Climb to 700, then climbing left turn to 3000 direct to ANTUA and hold. Continue climb in hold. Contact Pensacola APP CON.

ATIS ★ 290.325	PENSACOLA APP CON 127.35 278.8	NORTH WHITING TOWER ★ 121.4 306.925	GND CON 251.15	CLNC DEL 257.775	ASR
--------------------------	--	---	--------------------------	----------------------------	-----



†† Vectors or courses to PENS IAF between headings 010° CW to 115° are authorized NoPT at MERTY. Otherwise, traffic via PENS IAF must make a Procedure Turn at MERTY.

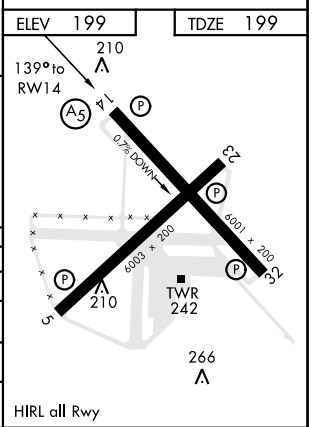
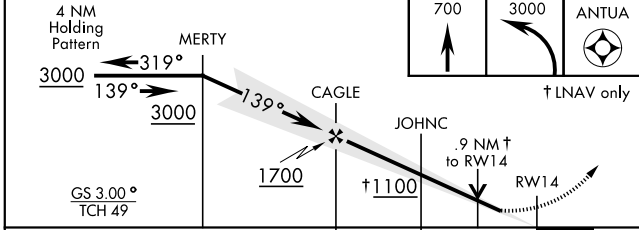
Westbound arrivals on V198-241 at PENS IAF require radar vectors or course reversal.

For uncompensated Baro VNAV systems, LNAV/VNAV NA below -15° C (5° F) or above 54° C (129° F).

- CAUTION:
1. Intensive VFR student training all quadrants.
 2. Whiting Fld NAS South - located 1 NM South.

ILS NOT FOR CIVIL USE

EMERG SAFE ALT 100 NM 3500



CATEGORY	A	B	C	D
S-ILS 14 *	424-½	225	(300-½)	
LNAV/VNAV DA *	449-½	250	(300-½)	
LNAV MDA **	520-½	321	(400-½)	
CIRCLING ***	600-1 401 (500-1)	660-1 461 (500-1)	660-1½ 461 (500-1½)	760-2 561 (600-2)

ILS Z or RNAV (GPS) RWY 14

SE-3, 31 DEC 2020 to 28 JAN 2021

SE-3, 31 DEC 2020 to 28 JAN 2021