

WAAS CH 42807 W31B	APP CRS 309°	Rwy Idg TDZE Apt Elev	7202 593 612
--	------------------------	-----------------------------	---

RNAV (GPS) RWY 31

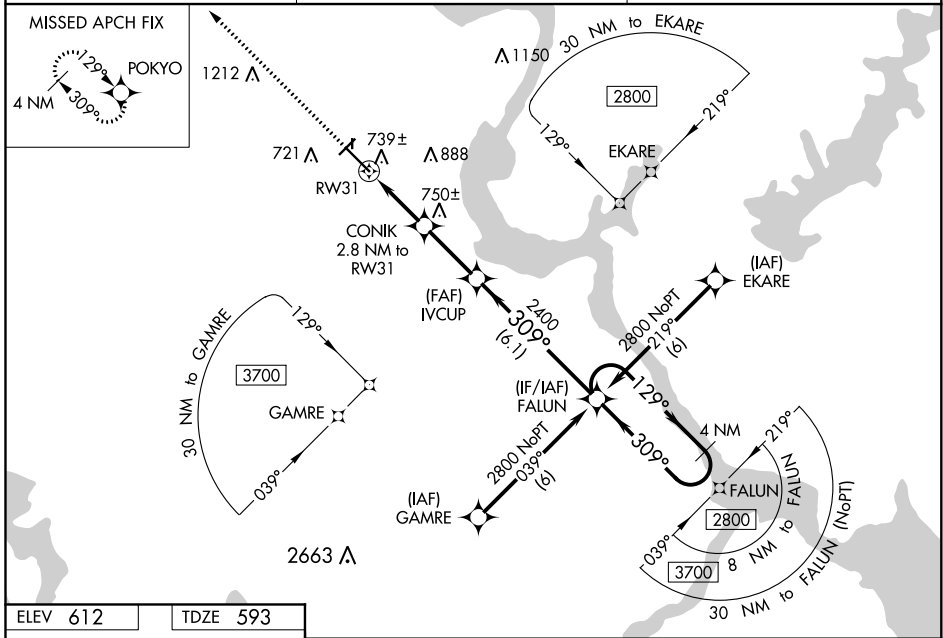
MUSKOGEE-DAVIS RGNL (MKO)

⚠ For uncompensated Baro-VNAV systems, procedure NA below -16°C (4°F) or above 47°C (116°F). Baro-VNAV and VDP NA when using Tahlequah altimeter setting. When local altimeter setting not received, use Tahlequah altimeter setting and increase all DA 92 feet, visibilities ¼ mile; increase all MDA 100 feet, LNAV visibilities Cat C/D/E ¼ mile, and Circling Cat C ¼ mile. Inop table does not apply to LNAV/VNAV Cat A/B/C and LNAV Cat C. Circling Rwy 4, 18, 22, 36 NA at night. Rwy 4, 18, 22, 36 helicopter visibility reduction below 1 SM NA.

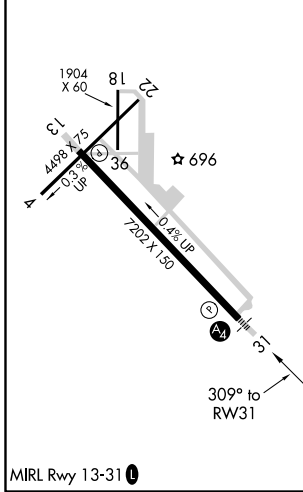


MALS
MISSED APPROACH:
Climb to 2900 direct
POKYO and hold.

ASOS 135.025	FORT WORTH CENTER 132.2 338.35	UNICOM 122.8 (CTAF)
------------------------	--	-------------------------------



ELEV 612	TDZE 593
-----------------	-----------------



2900 POKYO	↑	✧			
*LNAV only.	CONIK 2.8 NM to RW31	IVCUP			
*1.2 NM to RW31	*1.540	2400			
1.2	1.6 NM	2.7 NM	6.1 NM	4 NM Holding Pattern	
129°	309°	129°	2800	GP 3.00° TCH 53	
CATEGORY	A	B	C	D	E
LPV DA	843-1		250 (300-1)		
LNAV/VNAV DA	1139-2		546 (600-2)		
LNAV MDA	1000-¾	407 (400-¾)	1000-¼	407 (400-¼)	1000-½ 407 (400-½)
CIRCLING	1120-1 508 (600-1)	1160-1 548 (600-1)	1180-½ 568 (600-½)	1200-2 588 (600-2)	1580-3 968 (1000-3)

SC-1, 31 DEC 2020 to 28 JAN 2021

SC-1, 31 DEC 2020 to 28 JAN 2021