

APP CRS
039°

Rwy Idg **4498**
TDZE **612**
Apt Elev **612**

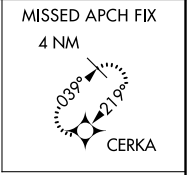
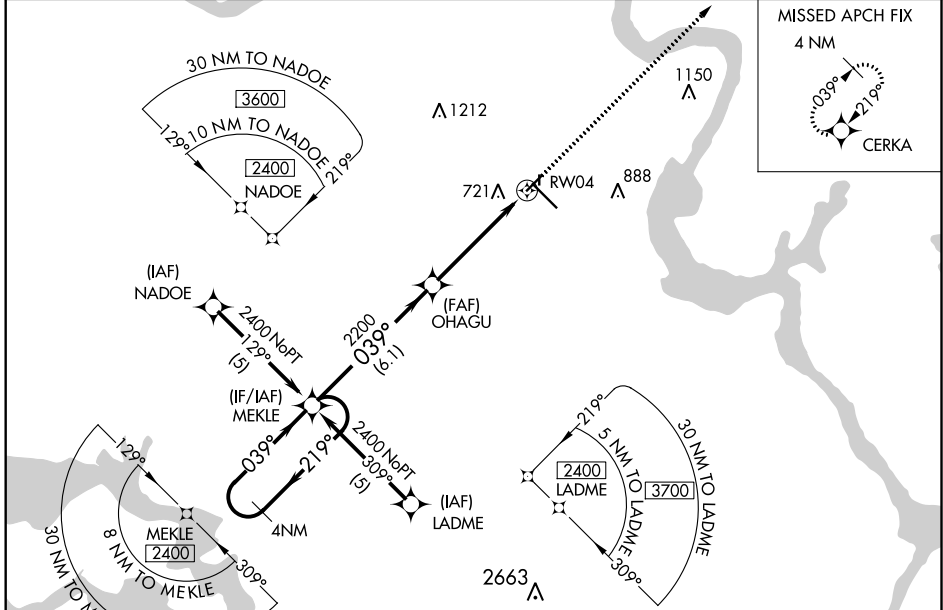
RNAV (GPS) RWY 4

MUSKOGEE-DAVIS RGNL (MKO)

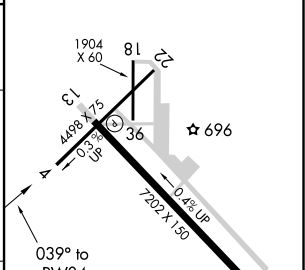
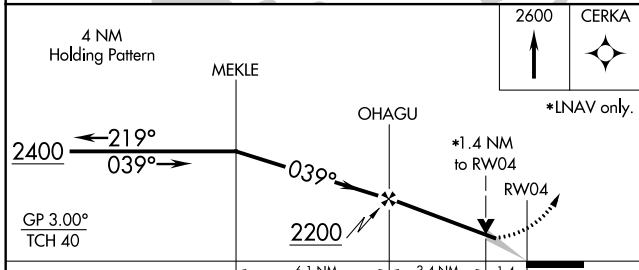
For uncompensated Baro-VNAV systems, LNAV/VNAV NA below -16°C (4°F) or above 47°C (116°F). DME/DME RNP-0.3 NA. Baro-VNAV and VDP NA when using Tahtlequah altimeter setting. When local altimeter setting not received, use Tahtlequah altimeter setting and increase DA 92 feet and all visibilities ¼ mile, all MDA 100 feet, Cat C and D visibilities ½ mile. Rwy 4, 18, 22, 36 helicopter visibility reduction below 1 SM NA. Straight-in Rwy 4 NA at night, Circling Rwy 4, 18, 22, 36 NA at night.

MISSED APPROACH: Climb to 2600 direct CERKA and hold.

ASOS **135.025** FORT WORTH CENTER **132.2 338.35** UNICOM **122.8 (CTAF)**



ELEV 612	TDZE 612
----------	----------



CATEGORY	A	B	C	D
LNAV/VNAV DA	1079-1¾ 467 (500-1¾)			
LNAV MDA	1080-1	468 (500-1)	1080-1½ 468 (500-1½)	1080-1½ 468 (500-1½)
CIRCLING	1120-1 508 (600-1)	1160-1 548 (600-1)	1180-1½ 568 (600-1½)	1200-2 588 (600-2)

MIRL Rwy 13-31

SC-1, 31 DEC 2020 to 28 JAN 2021

SC-1, 31 DEC 2020 to 28 JAN 2021