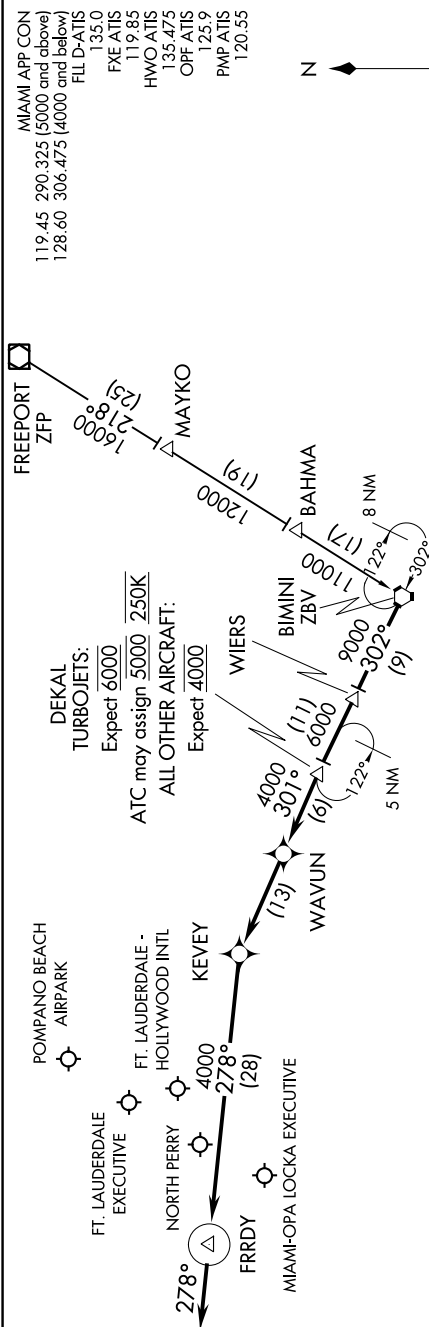


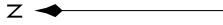
WAVUN FIVE ARRIVAL (RNAV)

FORT LAUDERDALE, FLORIDA

SE-3, 31 DEC 2020 to 28 JAN 2021



MIAMI APP CON
119.45 290.325 (5000 and above)
128.60 306.475 (4000 and below)
FL D-ATIS
135.0
FXE ATIS
119.83
HWO ATIS
135.475
OPF ATIS
125.9
PMP ATIS
120.55



NASSAU
ZQA

NOTE: RADAR required.
NOTE: RNAV 1.
NOTE: DME/DME/IRU or GPS required.

NOTE: Chart not to scale.

- NOTE: Landing Fort Lauderdale/Hollywood Intl West:
Expect RADAR vectors to final approach course prior to KEVEY.
- NOTE: Landing Fort Lauderdale/Hollywood Intl East:
Expect RADAR vectors to final approach course prior to FRRDY.
- NOTE: Landing Fort Lauderdale Executive, Pompano Beach Airport:
Expect RADAR vectors after DEKAL.
- NOTE: Landing Hollywood North Perry, Miami-Opa Locka Executive:
Expect RADAR vectors after WAVUN.

ARRIVAL ROUTE DESCRIPTION

FREEPORT TRANSITION (ZFP.WAVUN5)

From ZBV VORTAC on track 302° to WIERS, then on track 302° to DEKAL, then on track 301° to WAVUN, then on track 301° to KEVEY, then on track 278° to FRRDY, then on heading 278° or as assigned by ATC. Expect RADAR vectors.

SE-3, 31 DEC 2020 to 28 JAN 2021

WAVUN FIVE ARRIVAL (RNAV)

(ZBV.WAVUN5) 05DEC19

FORT LAUDERDALE, FLORIDA