

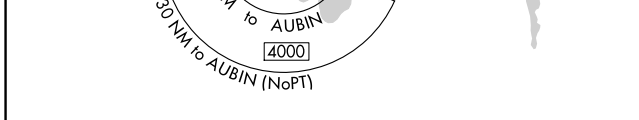
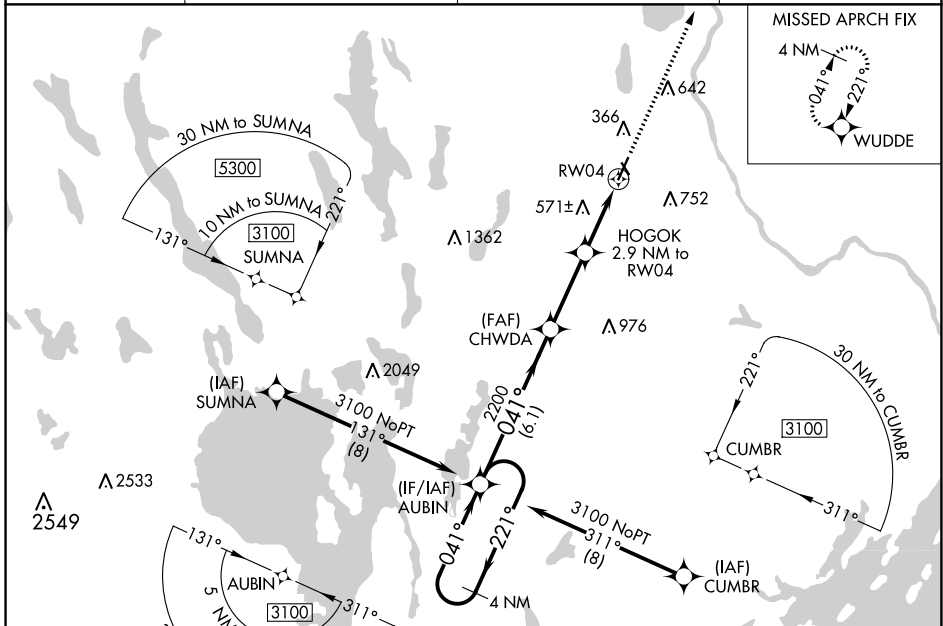
WAAS CH 69219 W04A	APP CRS 041°	Rwy Idg TDZE Apt Elev	5001 270 288
--	------------------------	-----------------------------	---

RNAV (GPS) RWY 4

AUBURN/LEWISTON MUNI (LEW)

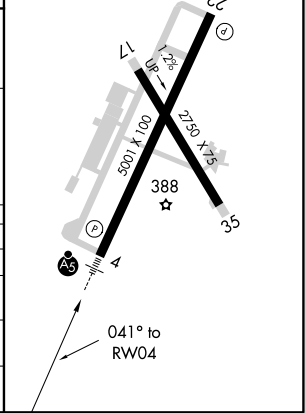
<p>⚠ Circling to Rwy 17, 22, 35 NA at night. For uncompensated Baro-VNAV systems, LNAV/VNAV NA below -16°C (4°F) or above 54°C (130°F). DME/DME RNP-0.3 NA. For inop ALS, increase visibility LNAV/VNAV all Cats to 1½ SM, LNAV Cat A/B to 1 SM and Cat C/D to 1½ SM. Rwy 04 helicopter visibility reduction below ¾ SM NA.</p>	<p>MALS R</p>	<p>MISSED APPROACH: Climb to 3100 direct WUDD and hold.</p>
	<p>UNICOM 122.8 (CTAF)</p>	

AWOS-3PT 118.025	PORTLAND APP CON ★ 125.5 353.9	PORTLAND CLNC DEL 124.05	UNICOM 122.8 (CTAF)
----------------------------	--	------------------------------------	-------------------------------



ELEV 288	TDZE 270
REIL Rwy 22	
HIRL Rwy 4-22	
MIRL Rwy 17-35	

4 NM Holding Pattern	AUBIN	CHWDA	HOGOK 2.9 NM to RW04	3100	WUDD
3100 ← 221°	041° →	041°	*1240	*1.6 NM to RW04	*LNAV only
GP 3.00° TCH 49		2200			
		6.1 NM	3 NM	1.3	1.6
CATEGORY	A	B	C	D	
LPV DA		470-½	200 (200-½)		
LNAV/VNAV DA		780-1	510 (500-1)		
LNAV MDA	840-¾	570 (600-¾)	840-1¼	570 (600-1¼)	
C CIRCLING	840-1 552 (600-1)	920-1 632 (700-1)	1060-2¼ 772 (800-2¼)	1120-2¾ 832 (900-2¾)	



NE-1, 31 DEC 2020 to 28 JAN 2021

NE-1, 31 DEC 2020 to 28 JAN 2021