

MANSFIELD, OHIO

VORTAC MFD
108.8
Chan **25**

APCH CRS
130°

Rwy Ldg **9001**
THRE **1246**
Arprt Elev **1297**

HI-VOR/DME or TACAN RWY 14

JAL-860 [USAF]

MANSFIELD LAHM RGNL (KMFD)

When control tower closed use Marion altimeter setting. MISSED APPROACH: Climb to 1700, then climbing left turn to 4000 on MFD VORTAC R-105 to BIARD/8 DME and hold, continue climb-in-hold to 4000.

ATIS
125.3

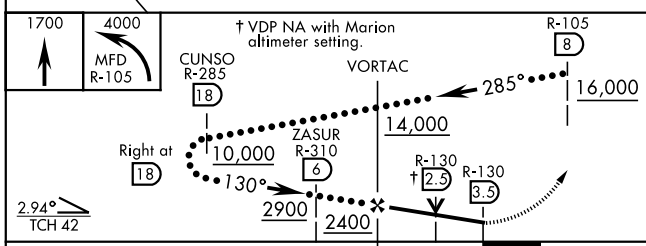
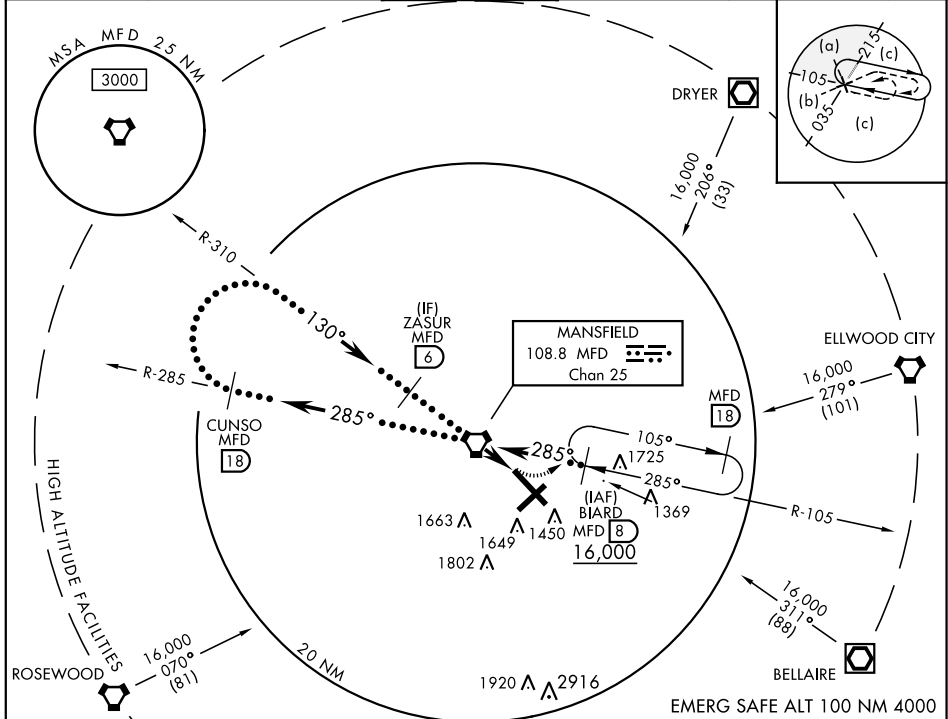
MANSFIELD APP CON
124.2 390.8

MANSFIELD TOWER
119.8 325.8

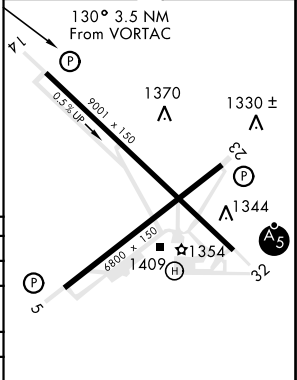
GND CON
121.8 325.8

UNICOM
122.95

ASR



ELEV 1297 THRE 1246



CATEGORY	C	D	E
S-14	1620-1	374 (400-1)	
CIRCLING	1760-1½	1880-2	2000-2½
	463 (500-1½)	583 (600-2)	703 (800-2½)
MARION ALTIMETER SETTING MINIMUMS			
S-14	1740-1¾	494 (500-1¾)	
CIRCLING	1880-1½	2000-2¼	2120-3
	583 (600-1½)	703 (800-2¼)	823 (900-3)

HIRL Rwy 5-23 and 14-32
REIL Rwy 5 and 23

MANSFIELD, OHIO

40°49'N-82°31'W

MANSFIELD LAHM RGNL (KMFD)

Amdt 5 26JUL12

HI-VOR/DME or TACAN RWY 14

EC-2, 31 DEC 2020 to 28 JAN 2021

EC-2, 31 DEC 2020 to 28 JAN 2021