

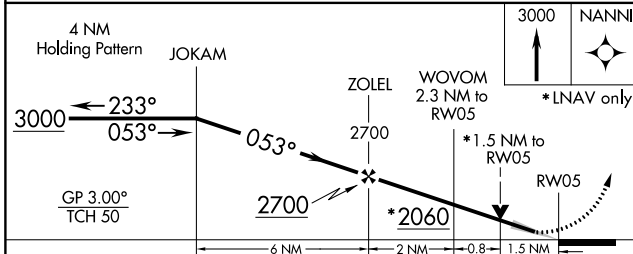
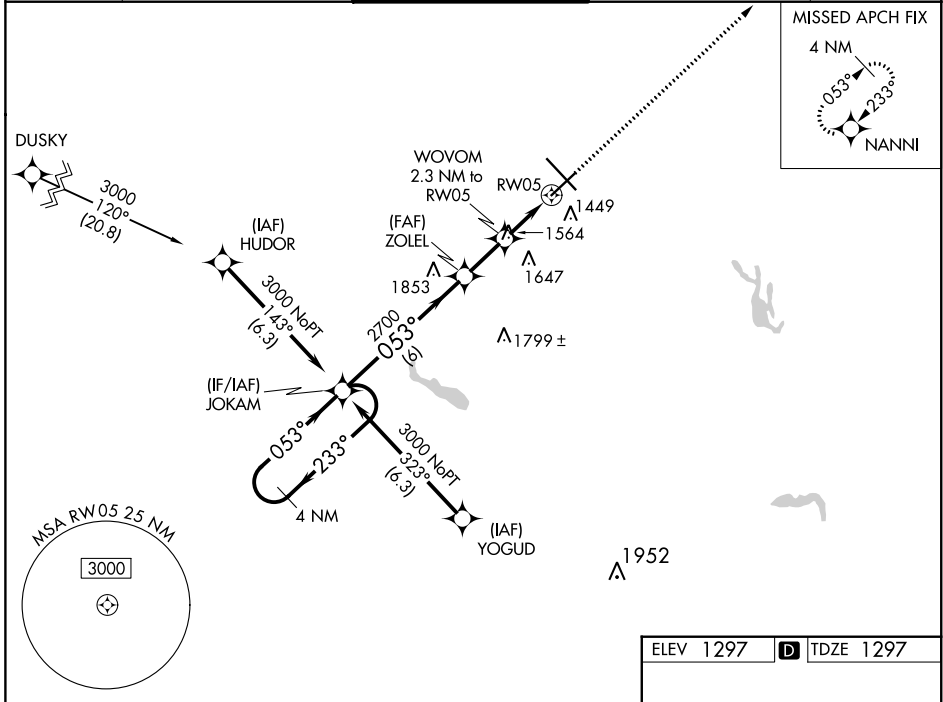
WAAS CH <b>86519</b> <b>W05A</b>	APP CRS <b>053°</b>	Rwy Idg TDZE Apt Elev	<b>6819</b> <b>1297</b> <b>1297</b>
--	------------------------	-----------------------------	---

# RNAV (GPS) RWY 5

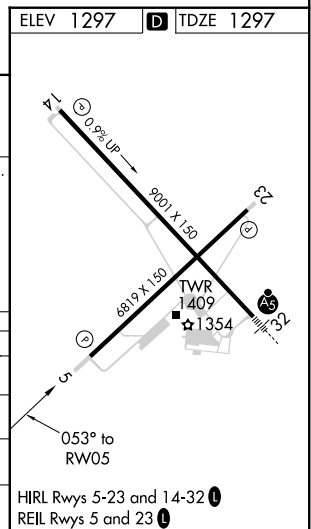
MANSFIELD LAHM RGNL (MFD)

RNP APCH	For uncompensated Baro-VNAV systems, LNAV/VNAV NA below -20°C (-4°F) or above 54°C (130°F).	MISSED APPROACH: Climb to 3000 direct NANNI and hold.
----------	---	---

ATIS <b>125.3</b>	CLEVELAND APP CON * <b>124.2 360.65</b>	MANSFIELD TOWER * <b>119.8 (CTAF) 291.775</b>	GND CON <b>121.8 291.775</b>	UNICOM <b>122.95</b>
----------------------	--	--	---------------------------------	-------------------------



CATEGORY	A	B	C	D
LPV DA		1547-7/8	250 (300-7/8)	
LNAV/VNAV DA		1590-1	293 (300-1)	
LNAV MDA	1820-1 523 (600-1)		1820-1 1/2 523 (600-1 1/2)	
<b>C</b> CIRCLING	1820-1 523 (600-1)		2000-2 703 (800-2)	2000-2 1/4 703 (800-2 1/4)



EC-2, 31 DEC 2020 to 28 JAN 2021

EC-2, 31 DEC 2020 to 28 JAN 2021