

LOC/DME I-LFT <b>109.5</b> Chan <b>32</b>	APP CRS <b>216°</b>	Rwy Idg <b>7659</b> TDZE <b>38</b> Apt Elev <b>42</b>
---	------------------------	---

# ILS or LOC RWY 22L

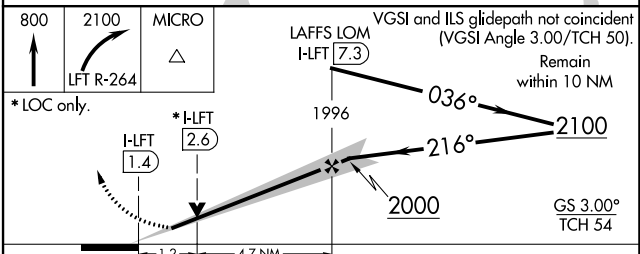
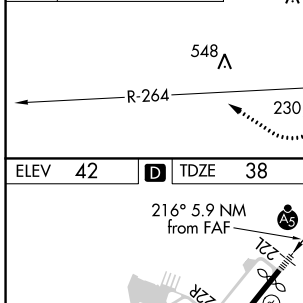
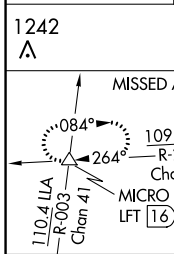
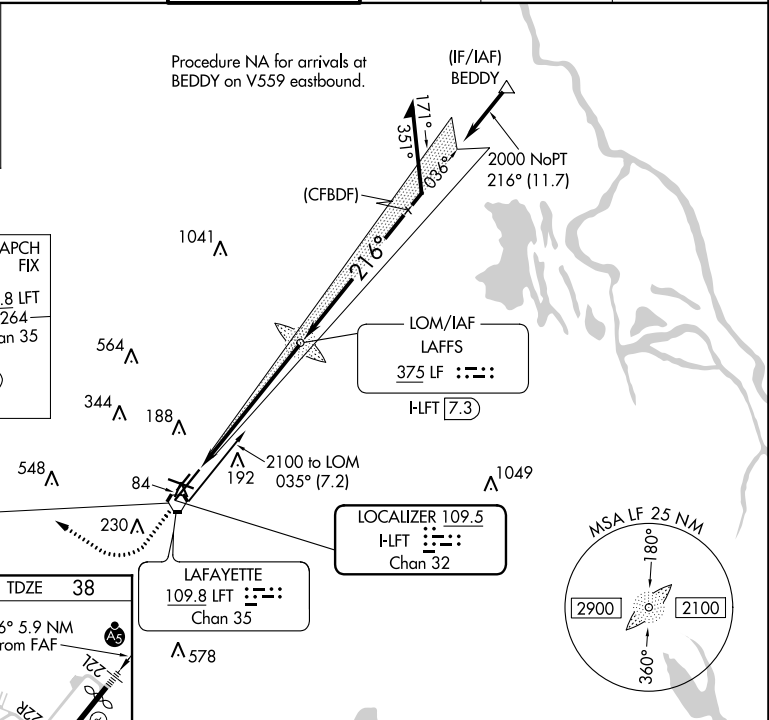
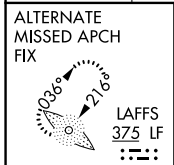
LAFAYETTE RGNL/PAUL FOURNET FIELD (L.F.T)

**VDP** NA with Acadiana Rgnl altimeter setting. When local altimeter setting not received, use Acadiana Rgnl altimeter setting and increase DA to 267 feet; increase all MDA 40 feet and S-LOC 22L visibility Cat C/D to RVR 5000 and Circling visibility Cat C/D 1/4 SM. For inop MALSR when using Acadiana Rgnl altimeter setting, increase S-LOC 22L Cat C and D visibility to 1 1/2 mile.  
**\*\*RVR 1800 authorized with use of FD or AP or HUD to DA (NA when using Acadiana Rgnl altimeter setting).**

**MALS**  
ASR

**MISSED APPROACH:**  
Climb to 800 then climbing right turn to 2100 on LFT VORTAC R-264 to MICRO INT/ LFT 16 DME and hold.

ATIS <b>134.05</b>	LAFAYETTE APP CON * <b>121.1 363.0</b>	LAFAYETTE TOWER * <b>118.5 (CTAF) 0 257.8</b>	GND CON <b>121.8</b>	CLNC DEL <b>125.55</b>	UNICOM <b>122.95</b>
-----------------------	---	--	-------------------------	---------------------------	-------------------------



REIL Rwy 4L, 4R, 11, 22R and 29  
 MIRL Rwy 11-29 and 4L-22R  
 HIRL Rwy 4R-22L

FAF to MAP 5.9 NM

Knots	60	90	120	150	180
Min:Sec	5:54	3:56	2:57	2:22	1:58

CATEGORY	A	B	C	D
S-ILS 22L**	238/24			
S-LOC 22L	480/24	442 (500-1/2)	480/45	442 (500-3/4)
<b>C</b> CIRCLING	540-1 498 (500-1)	580-1 538 (600-1)	700-1 3/4 658 (700-1 3/4)	700-2 658 (700-2)

SC-4, 31 DEC 2020 to 28 JAN 2021

SC-4, 31 DEC 2020 to 28 JAN 2021