

WAAS CH 50503 W22A	APP CRS 216°	Rwy Idg TDZE 38 Apt Elev 42
--	------------------------	---

RNAV (GPS) RWY 22L

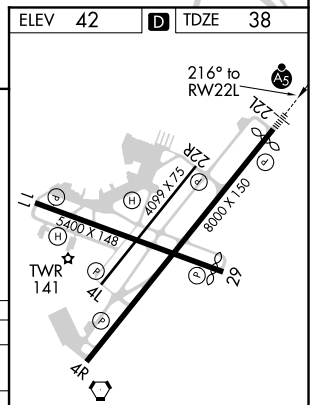
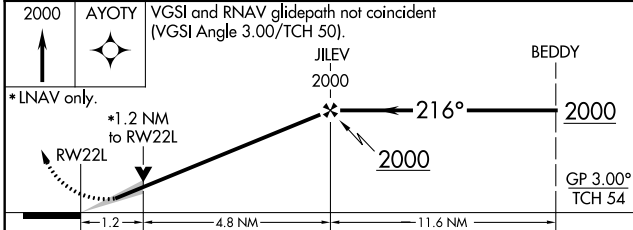
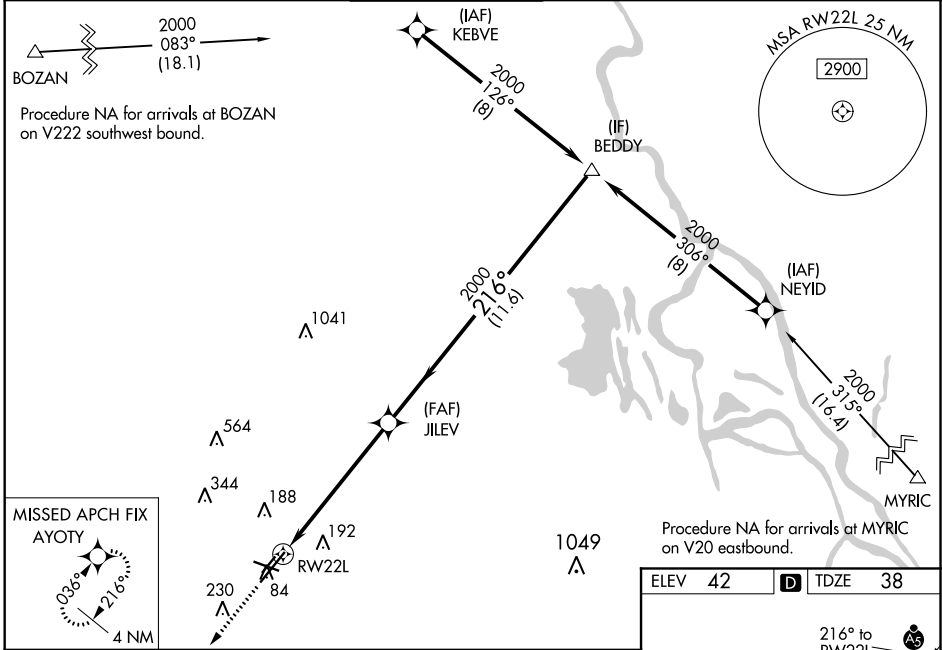
LAFAYETTE RGNL/PAUL FOURNET FIELD (L.F.T)

RNP APCH.

▼ For uncompensated Baro-VNAV systems, LNAV/VNAV NA below -15°C (5°F) or above 54°C (130°F). VDP NA with Acadiana Rgnl altimeter setting. When local altimeter setting not received, use Acadiana Rgnl altimeter setting and increase all DA 29 feet and all MDA 40 feet; increase LNAV/VNAV visibility all Cats to RVR 3500, increase Circling visibility Cat C/D ½ SM. For inop MALS, increase LNAV Cats C and D visibility ¾ mile. For inop MALS, when using Acadiana Rgnl altimeter setting, increase LNAV/VNAV all Cats visibility to RVR 6000. Baro-VNAV NA when using Acadiana Rgnl altimeter setting.

MALS MISSED APPROACH: Climb to 2000 direct AYOTY and hold.

ATIS 134.05	LAFAYETTE APP CON * 121.1 363.0	LAFAYETTE TOWER * 118.5 (CTAF) 0 257.8	GND CON 121.8	CLNC DEL 125.55	UNICOM 122.95
-----------------------	---	--	-------------------------	---------------------------	-------------------------



CATEGORY	A	B	C	D
LPV DA		238/24	200 (200-½)	
LNAV/VNAV DA		349/24	311 (400-½)	
LNAV MDA	480/24	442 (500-½)	480/45	442 (500-¾)
CIRCLING	540-1 498 (500-1)	580-1 538 (600-1)	700-1¾ 658 (700-1¾)	700-2 658 (700-2)

REIL Rwy 4L, 4R, 11, 22R and 29
MIRL Rwy 11-29 and 4L-22R
HIRL Rwy 4R-22L

SC-4, 31 DEC 2020 to 28 JAN 2021

SC-4, 31 DEC 2020 to 28 JAN 2021