

VORTAC LFT	APP CRS	Rwy Idg	5400
109.8	137°	TDZE	42
Chan 35		Apt Elev	42

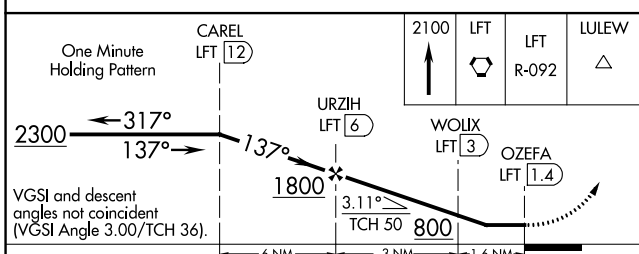
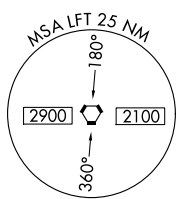
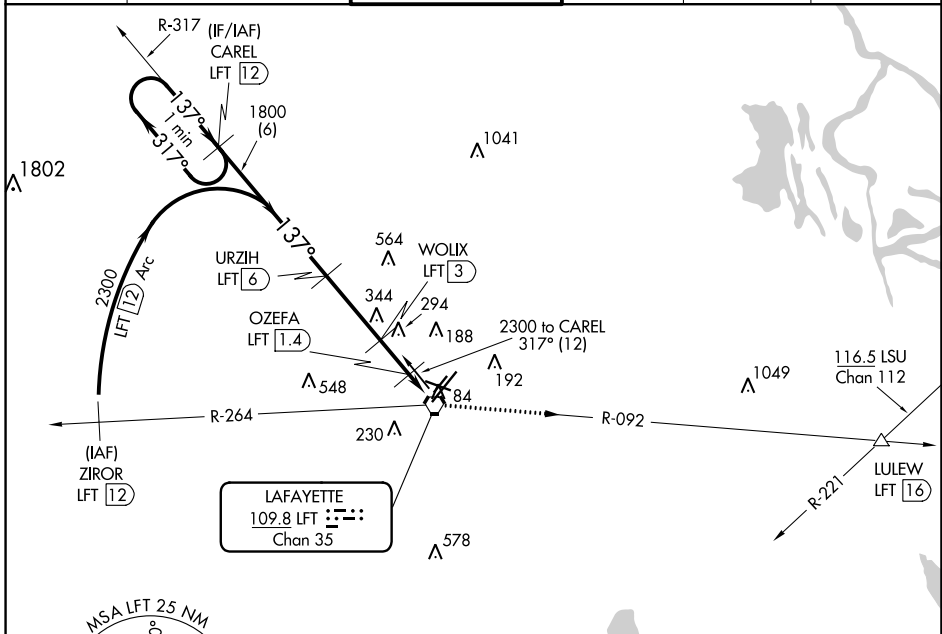
VOR/DME RWY 11

LAFAYETTE RGNL/PAUL FOURNET FIELD (LFT)

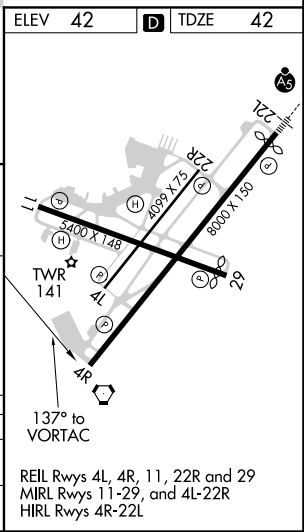
⚠ Procedure NA at night. Helicopter visibility reduction below 1 SM NA. When local altimeter setting not received, use Acadiana Rgnl altimeter setting and increase all MDAs 40 feet, increase Circling visibility Cat C/D ¼ SM.

MISSED APPROACH: Climb to 2100 to LFT VORTAC and on LFT VORTAC R-092 to LULEW/LFT 16 DME.

ATIS	LAFAYETTE APP CON*	LAFAYETTE TOWER*	GND CON	CLNC DEL	UNICOM
134.05	121.1 363.0	118.5 (CTAF) 0 257.8	121.8	125.55	122.95



CATEGORY	A	B	C	D
S-11	660-1 618 (700-1)	660-1 618 (700-1)	660-1 618 (700-1 3/4)	660-2 618 (700-2)
C CIRCLING	660-1 618 (700-1)	660-1 618 (700-1)	700-1 658 (700-1 3/4)	700-2 658 (700-2)



SC-4, 31 DEC 2020 to 28 JAN 2021

SC-4, 31 DEC 2020 to 28 JAN 2021