

WAAS CH 86320 W22A	APP CRS 222°	Rwy Idg TDZE Apt Elev	5004 334 338
--	------------------------	-----------------------------	---

RNAV (GPS) RWY 22

DYERSBURG RGNL (DYR)

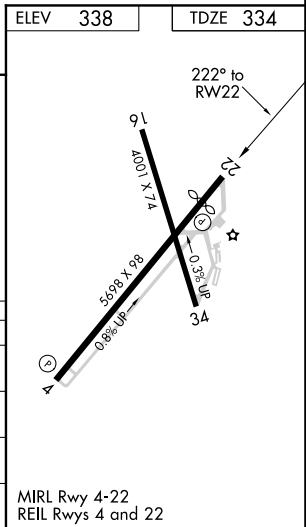
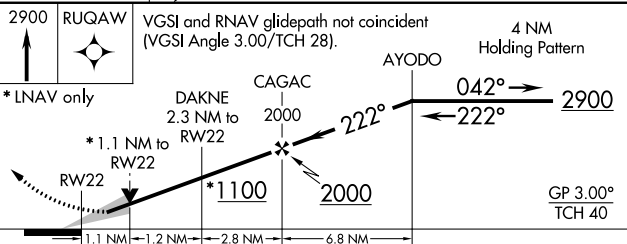
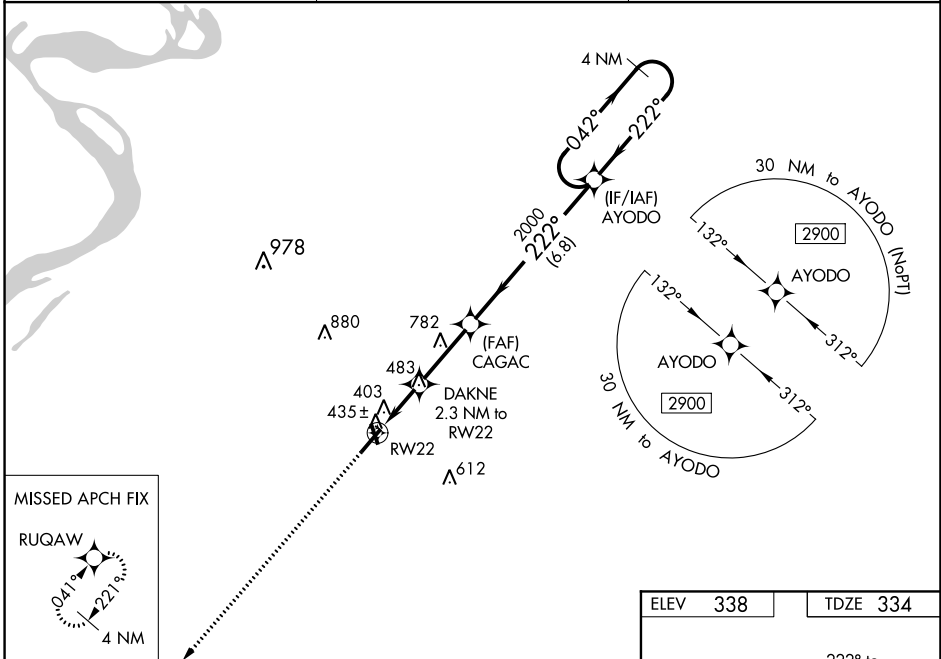
⚠ For uncompensated Baro-VNAV systems, LNAV/VNAV NA below -15°C (5°F) or above 54°C (130°F). Baro-VNAV and VDP NA when using Blytheville Muni altimeter setting. DME/DME RNP-0.3 NA. When local altimeter setting not received, use Blytheville Muni altimeter setting: increase LPV DA to 644 feet and LNAV/VNAV DA to 676 feet and all MDA 60 feet; increase LPV visibility all Cats 1/8 mile and LNAV/VNAV visibility all Cats and LNAV Cats C/D visibility 1/4 mile. Night landing: Rwy 16, 34 NA.

MISSED APPROACH:
Climb to 2900 direct RUQAW and hold.

AWOS-3PT
135.625

MEMPHIS CENTER
134.65 316.15

UNICOM
123.05 (CTAF)



CATEGORY	A	B	C	D
LPV DA		584-7/8	250 (300-7/8)	
LNAV/VNAV DA		616-7/8	282 (300-7/8)	
LNAV MDA		700-1	366 (400-1)	
CIRCLING	740-1 402 (500-1)	800-1 462 (500-1)	800-1½ 462 (500-1½)	900-2 562 (600-2)

MIRL Rwy 4-22
REIL Rwy 4 and 22