

WAAS CH 53430 W04A	APP CRS 038°	Rwy Idg 4000 TDZE 946 Apt Elev 946
--	------------------------	---

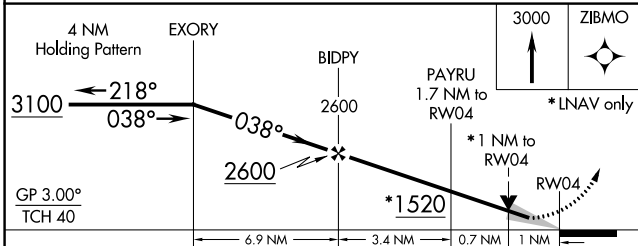
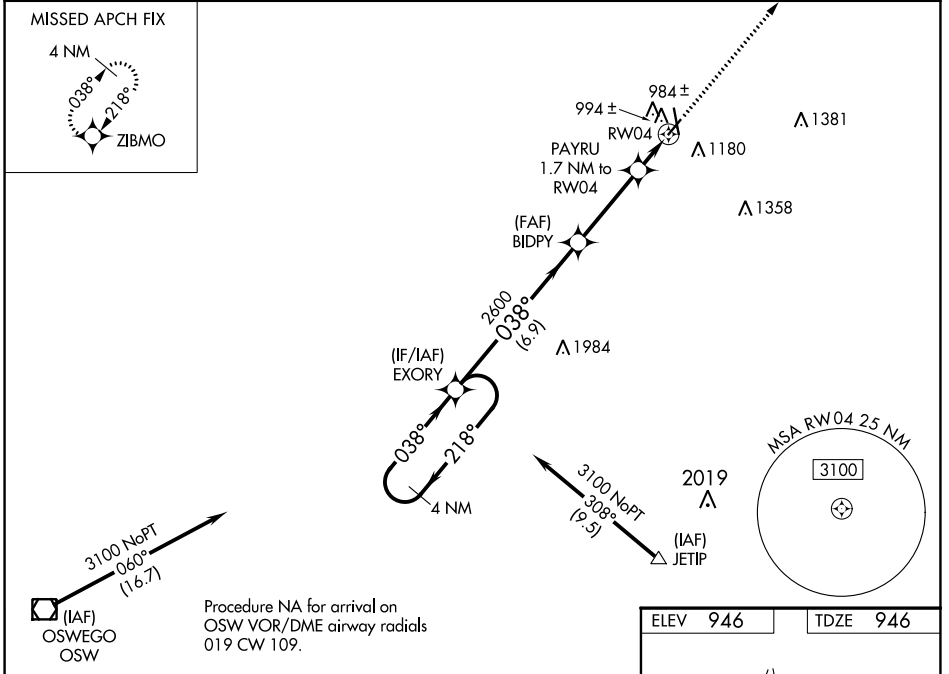
RNAV (GPS) RWY 4

ATKINSON MUNI (PTS)

⚠ For uncompensated Baro-VNAV systems, LNAV/VNAV NA below -16°C (4°F) or above 54°C (130°F). DME/DME RNP-0.3 NA. Baro-VNAV and VDP NA with Joplin altimeter setting.
⚠ When local altimeter setting not received, use Joplin altimeter setting and increase all DA 53 feet and all MDA 60 feet, and increase LPV all Cats, LNAV/VNAV all Cats and LNAV Cat C visibility 1/8 mile, and Circling Cat C visibility 1/4 mile.

MISSED APPROACH:
Climb to 3000 direct ZIBMO and hold.

AWOS-3 118.775	KANSAS CITY CENTER 128.6 282.325	GCO 121.725	UNICOM 123.0 (CTAF)
--------------------------	--	-----------------------	-------------------------------



ELEV 946	TDZE 946
----------	----------

MRL Rwy 4-22 and 17-35

REIL Rwy 4, 22, 17, and 35

CATEGORY	A	B	C	D
LPV DA	1196-7/8	250 (300-7/8)		NA
LNAV/VNAV DA	1196-7/8	250 (300-7/8)		NA
LNAV MDA	1300-1	354 (400-1)		NA
C CIRCLING	1480-1	534 (600-1)	1520-1 1/2 574 (600-1 1/2)	NA

NC-2, 31 DEC 2020 to 28 JAN 2021

NC-2, 31 DEC 2020 to 28 JAN 2021