

WAAS CH 87027 W32A	APP CRS 322°	Rwy Idg TDZE Apt Elev	3510 545 556
--	------------------------	-----------------------------	---

RNAV (GPS) RWY 32

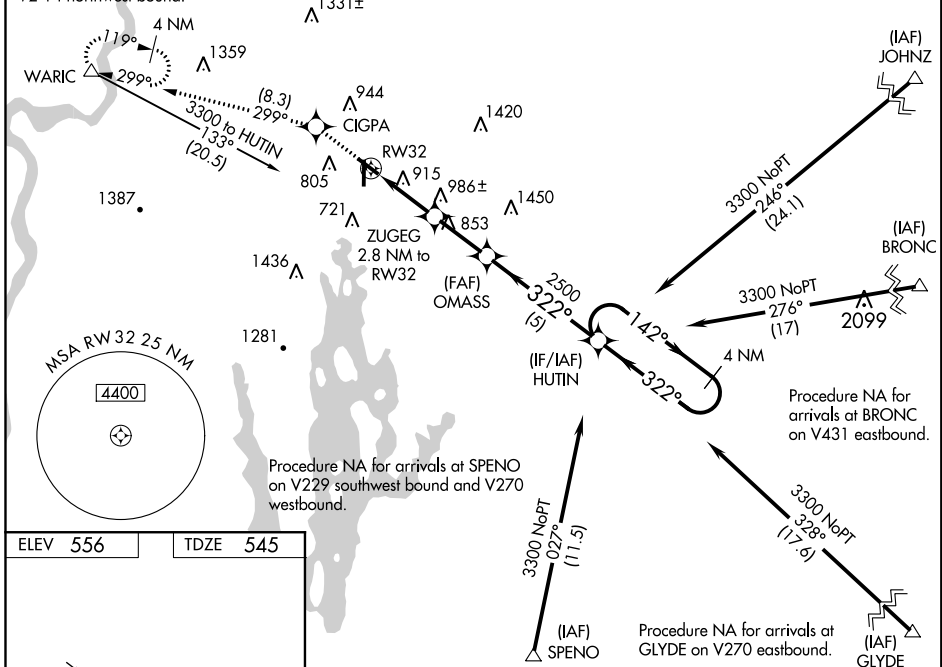
ORANGE MUNI (O.R.E.)

⚠ Circling to Rwy 1-19 NA at night. For uncompensated Baro-VNAV systems, LNAV/VNAV NA below -16°C (4°F) or above 54°C (130°F). DME/DME RNP-0.3 NA. Helicopter visibility reduction below 3/4 SM NA. Baro-VNAV and VDP NA when using Keene altimeter setting. When local altimeter setting not received, use KEENE altimeter setting and increase all DA 55 feet and all MDA 60 feet; increase LPV all Cats visibility 1/8 mile, LNAV/VNAV all Cats and LNAV and Circling Cat B visibility 1/4 mile.

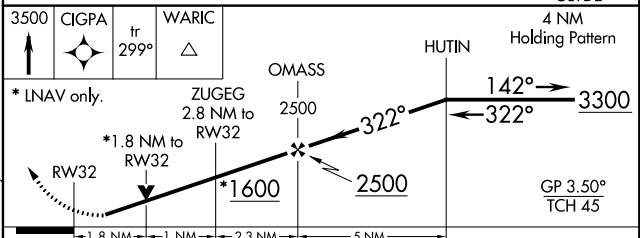
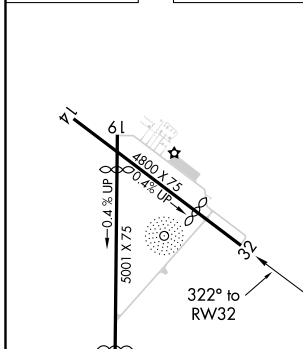
MISSED APPROACH: Climb to 3500 direct CIGPA and on track 299° to WARIC and hold, continue climb-in-hold to 3500.

ASOS 135.675	BOSTON CENTER 123.75 338.2	UNICOM 122.8 (CTAF) 0
-------------------------------	---	--

Procedure NA for arrivals at WARIC on V93 southwest bound and V2-14 northwest bound. Procedure NA for arrivals at JOHNZ on V106 eastbound.



ELEV 556	TDZE 545
-----------------	-----------------



CATEGORY	A	B	C	D
LPV DA	873-1	328 (400-1)		NA
LNAV/VNAV DA	1288-2¼	743 (800-2¼)		NA
LNAV MDA	1240-1	695 (700-1)		NA
CIRCLING	1260-1	704 (800-1)		NA

NE-1, 31 DEC 2020 to 28 JAN 2021

NE-1, 31 DEC 2020 to 28 JAN 2021