

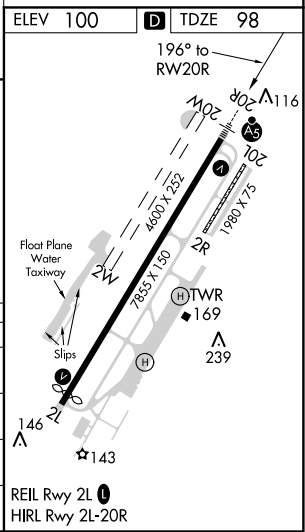
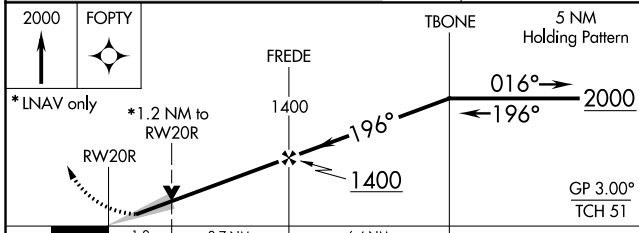
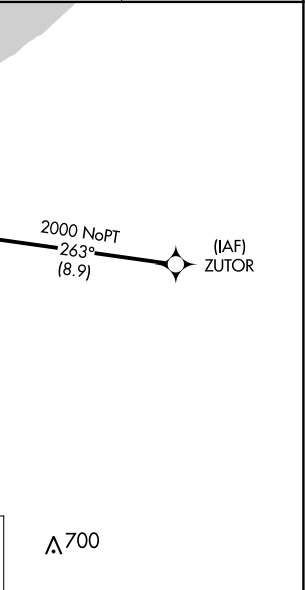
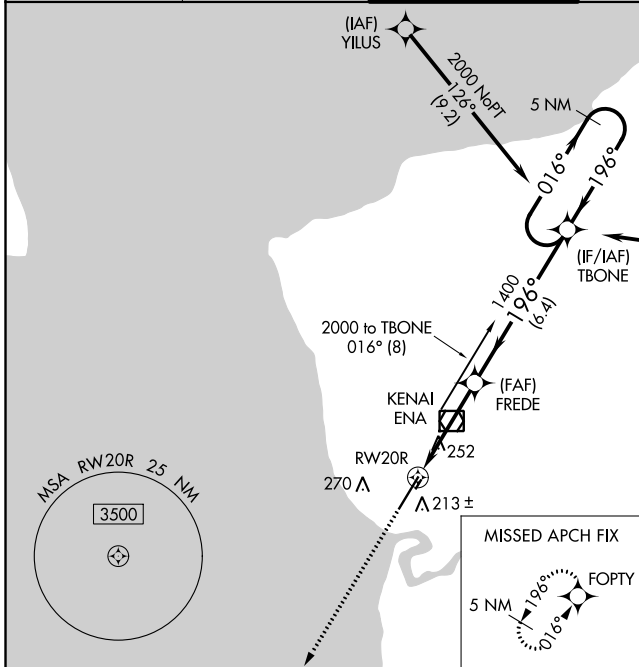
WAAS CH 99504 W20A	APP CRS 196°	Rwy Idg 7575 TDZE 98 Apt Elev 100
--	------------------------	--

RNAV (GPS) RWY 20R

KENAI MUNI (ENA) (PAEN)

RNP APCH	<p>For uncompensated Baro-VNAV systems, LNAV/VNAV NA below -18°C (0°F) or above 54°C (130°F). Baro-VNAV and VDP NA when using Soldotna altimeter setting. Circling Rwy 2R, 20L NA at night. When local altimeter setting not received, use Soldotna altimeter setting and increase all DA 22 feet and all MDA 40 feet, increase LNAV visibility Cat C and D to RVR 5000. Circling Rwy 2W, 20W NA. # RVR 1800 authorized with use of FD or AP or HUD to DA. (NA when using Soldotna altimeter setting).</p>	MALSR	MISSED APPROACH: Climb to 2000 direct FOPTY and hold.
----------	--	-------	--

ATIS 133.35	ANCHORAGE CENTER 125.7 379.1	KENAI TOWER* 121.3 (CTAF) 239.3	GND CON 118.75	KENAI RADIO 122.65
-----------------------	--	---	--------------------------	------------------------------



CATEGORY	A	B	C	D
LPV DA#		298/24	200 (200-½)	
LNAV/VNAV DA		348/24	250 (300-½)	
LNAV MDA	520/24	422 (500-½)	520/40	422 (500-¾)
CIRCLING	560-1 460 (500-1)	580-1 480 (500-1)	580-1½ 480 (500-½)	680-2 580 (600-2)

AK, 31 DEC 2020 to 25 FEB 2021

AK, 31 DEC 2020 to 25 FEB 2021