

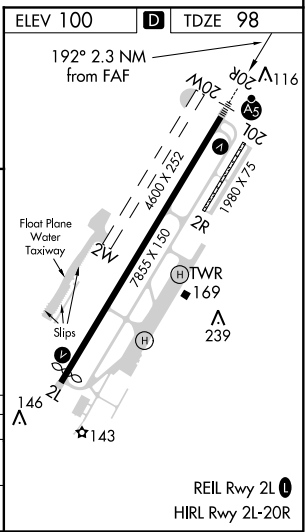
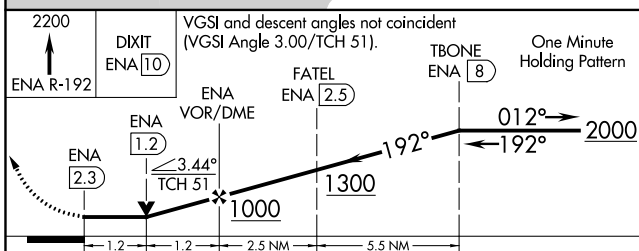
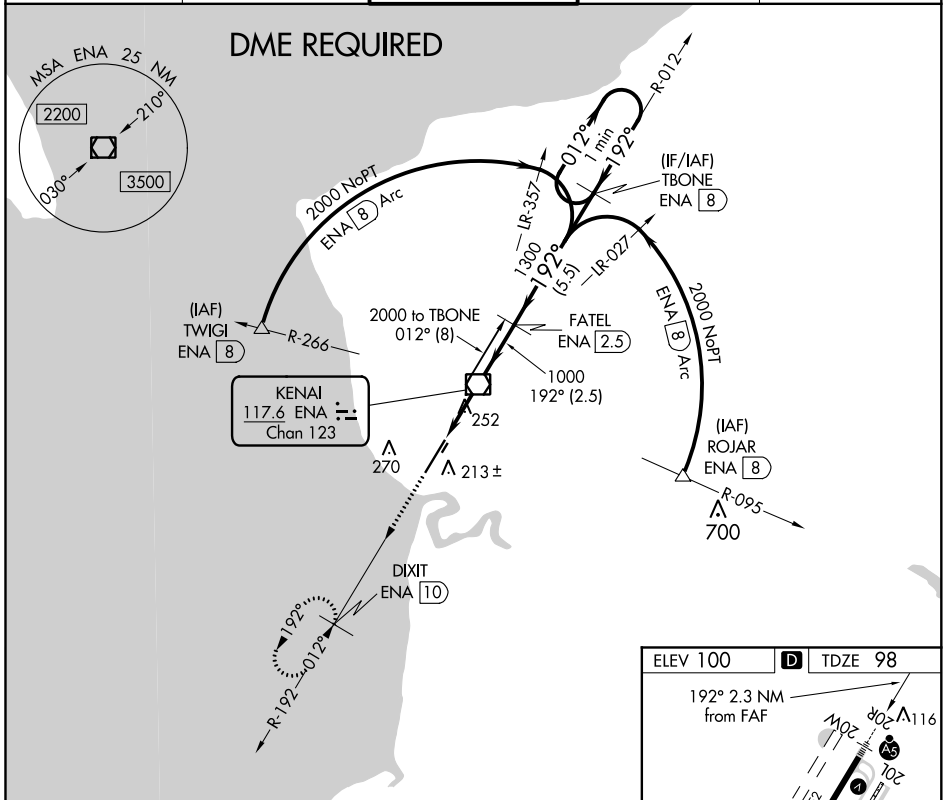
VOR/DME ENA 117.6 Chan 123	APP CRS 192°	Rwy Idg 7575	TDZE 98
		Apt Elev 100	

VOR RWY 20R

KENAI MUNI (ENA) (PAEN)

<p>⚠ Circling Rwy 2R, 20L NA at night. DME required. VDP NA when using Soldoima altimeter setting. When local altimeter setting not received, use Soldoima altimeter setting and increase all MDA 40 feet, increase S-20R Cats C and D visibility to RVR 5000. Circling Rwy 2W, 20W NA.</p> <p>❄ -31°C</p>	MALSR	MISSED APPROACH: Climb to 2200 on ENA VOR/DME R-192 to DIXIT/ENA VOR/DME 10 DME and hold.

ATIS 133.35	ANCHORAGE CENTER 125.7 379.1	KENAI TOWER* 121.3 (CTAF) 239.3	GND CON 118.75	KENAI RADIO 122.65
-----------------------	----------------------------------------	-------------------------------------------	--------------------------	------------------------------



CATEGORY	A	B	C	D
S-20R	520/24 422 (500-½)		520/40 422 (500-¾)	
CIRCLING	560-1 460 (500-1)	580-1 480 (500-1)	580-1½ 480 (500-½)	680-2 580 (600-2)

AK, 31 DEC 2020 to 25 FEB 2021

AK, 31 DEC 2020 to 25 FEB 2021