

VOR/DME ENA 117.6 Chan 123	APP CRS 012°	Rwy Idg TDZE 94 Apt Elev 100
---	------------------------	--

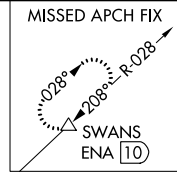
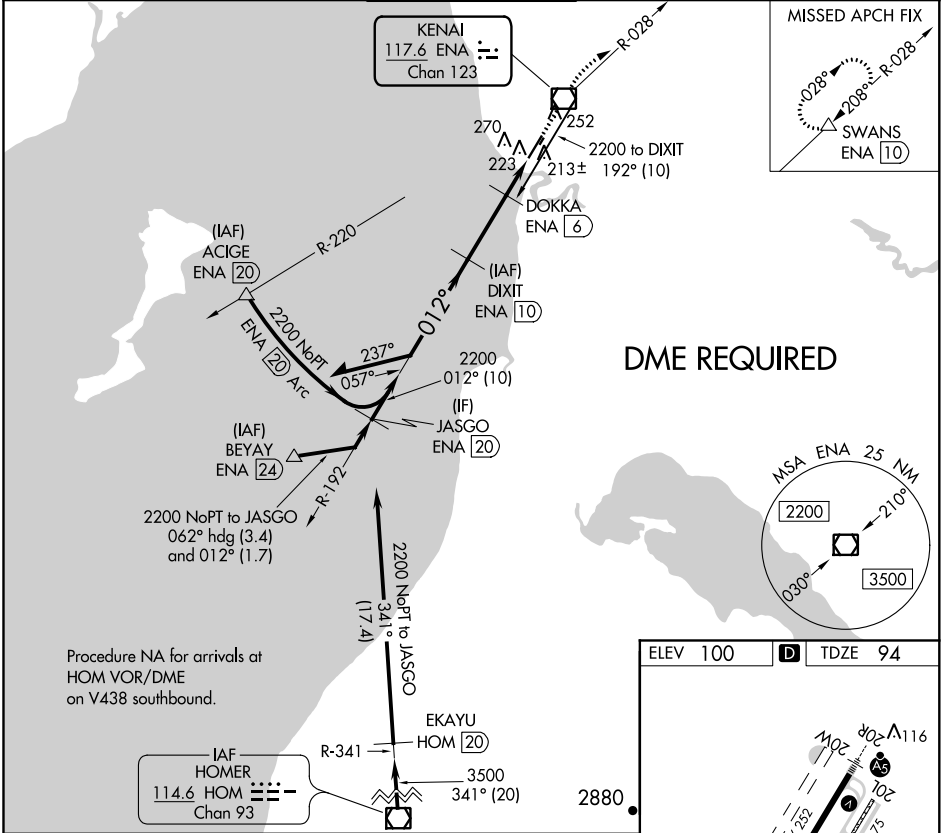
VOR RWY 2L

KENAI MUNI (ENA) (PAEN)

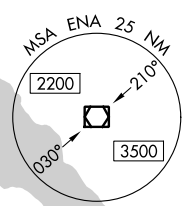
⚠ Circling Rwy 2R, 20L NA at night. DME required. When local altimeter setting not received, use Soldotna altimeter setting and increase all MDA 40 feet; increase S-2L Cat C and D visibility 1/8 mile and Circling Cat D visibility 1/4 mile. VDP NA with Soldotna altimeter setting. Circling Rwy 2W, 20W NA.

MISSED APPROACH: Climb to 2000 direct ENA VOR/DME and on ENA VOR/DME R-028 and on SWANS/ENA 10 DME and hold.

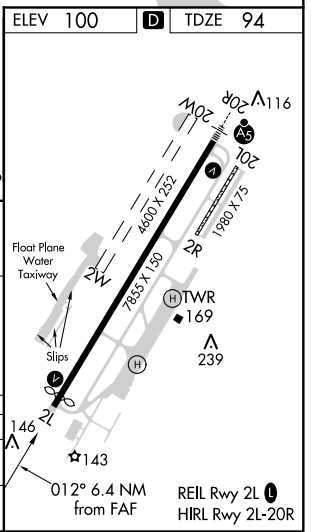
ATIS 133.35	ANCHORAGE CENTER 125.7 379.1	KENAI TOWER* 121.3 (CTAF) 239.3	GND CON 118.75	KENAI RADIO 122.65
-----------------------	--	---	--------------------------	------------------------------



DME REQUIRED



Procedure NA for arrivals at HOM VOR/DME on V438 southbound.



Remain within 10 NM	DIXIT ENA 10	2000 ENA	ENA R-028	SWANS
	2200 192°	DOKKA ENA 6	ENA 4.6	ENA 3.6
2200 012°	3.02° TCH 53	900	4 NM	1.4 NM
				1.1 NM
CATEGORY	A	B	C	D
S-2L	480-1	386 (400-1)	480-1 1/8	386 (400-1 1/8)
CIRCLING	560-1 460 (500-1)	580-1 480 (500-1)	580-1 1/2 480 (500-1 1/2)	680-2 580 (600-2)

AK, 31 DEC 2020 to 25 FEB 2021

AK, 31 DEC 2020 to 25 FEB 2021