



KNIK THREE DEPARTURE

TED STEVENS ANCHORAGE INTL (ANC) (PANC)
AL-1500 (FAA) ANCHORAGE, ALASKA

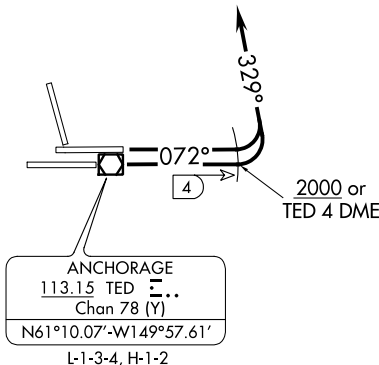
**TOP ALTITUDE:
FL200**

D-ATIS 135.5
CLNC DEL 119.4 323.1
GND CON 121.9 338.25
ANCHORAGE TOWER 118.3 257.8
ANCHORAGE DEP CON 118.6 290.5

TALKEETNA
116.2 TKA 
Chan 109
N62°17.90'-W150°06.32'
L-3-4, H-1-2

BIG LAKE
112.5 BGQ 
Chan 72
N61°34.17'-W149°58.03'
L-1-3-4, H-1-2

△
NODLE
N61°17.00'
W152°00.00'
13700
H-1-2



NOTE: RADAR required.
NOTE: Aircraft cleared via NODLE FIX
cross at or above 13700 for terrain.

TAKEOFF MINIMUMS

Rwys 15, 25L/R, 33: NA-ATC.
Rwy 7L: Standard with minimum climb of 253' per NM to 400.
Rwy 7R: Standard with minimum climb of 285' per NM to 400.

NOTE: Chart not to scale.

▼ **DEPARTURE ROUTE DESCRIPTION**

TAKEOFF RUNWAYS 7L/R: Climb heading 072° to 2000 or TED 4 DME, whichever comes first, then climbing left turn heading 329° for vectors to assigned route or fix. Maintain FL200 or assigned altitude, expect filed altitude 10 minutes after departure.

All aircraft, climb as rapidly as practical through 3000, if unable to reach 2000 by TED 4 DME advise ATC prior to departure.

KNIK THREE DEPARTURE