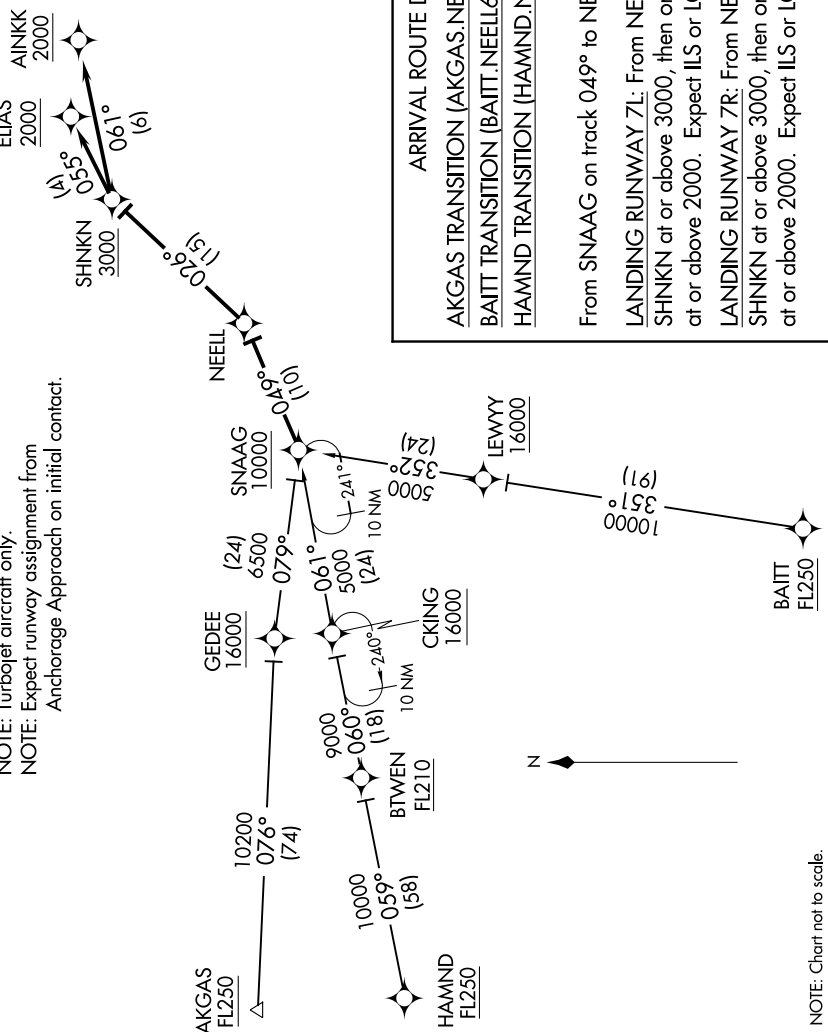


# NEELL SIX ARRIVAL (RNAV)

AK, 31 DEC 2020 to 25 FEB 2021

ANCHORAGE APP CON  
126.4 270.25  
D-ATIS  
135.5

- NOTE: RNAV 1.
- NOTE: GPS required.
- NOTE: Turbojet aircraft only.
- NOTE: Expect runway assignment from Anchorage Approach on initial contact.



LOCALIZER 109.9  
F-IGN  
Chan 36

LOCALIZER 111.3  
I-ANC  
Chan 50

**ARRIVAL ROUTE DESCRIPTION**

AKGAS TRANSITION (AKGAS.NEELL6)  
BAITT TRANSITION (BAITT.NEELL6)  
HAMND TRANSITION (HAMND.NEELL6)

From SNAAG on track 049° to NEELL.

LANDING RUNWAY 7L: From NEELL on track 026° to cross SHNKN at or above 3000, then on track 061° to cross AINKK at or above 2000. Expect ILS or LOC/DME RWY 7L approach.

LANDING RUNWAY 7R: From NEELL on track 026° to cross SHNKN at or above 3000, then on track 055° to cross ELIAS at or above 2000. Expect ILS or LOC/DME RWY 7R approach.

NOTE: Chart not to scale.

AK, 31 DEC 2020 to 25 FEB 2021

# NEELL SIX ARRIVAL (RNAV)