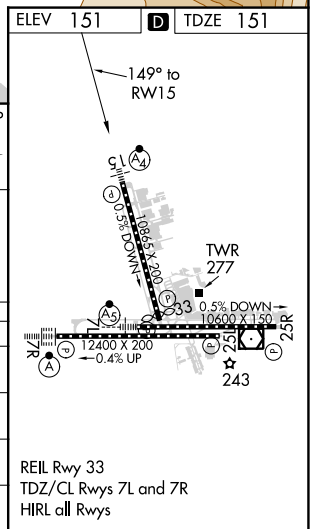
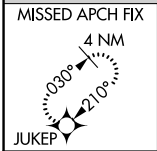
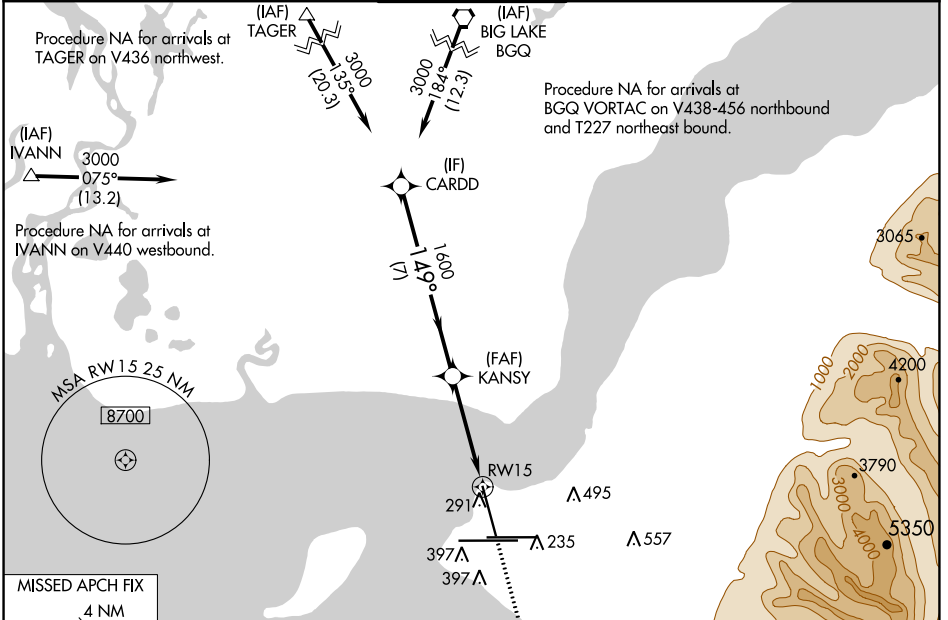


WAAS CH <b>90115</b> <b>W15A</b>	APP CRS <b>149°</b>	Rwy Idg <b>10000</b> TDZE <b>151</b> Apt Elev <b>151</b>
--	------------------------	--

# RNAV (GPS) RWY 15

TED STEVENS ANCHORAGE INTL (ANC) (PANC)

RNP APCH. 		MASF 	MISSED APPROACH: Climb to 3000 direct ZUXAN and on track 229° to JUKEP and hold.	
D-ATIS <b>135.5</b>	ANCHORAGE APP CON <b>118.6 290.5</b>	ANCHORAGE TOWER <b>118.3 257.8</b>	GND CON <b>121.9 338.25</b>	CLNC DEL <b>119.4 323.1</b>



CARDD	VGSI and RNAV glidepath not coincident (VGSI Angle 3.20/TCH 85).	3000	ZUXAN	JUKEP
3000	1600	1600	tr 229°	
GP 3.20° TCH 60			*0.8 NM to RWY 15	*LNAV only
	7 NM	3.3 NM	0.8 NM	

CATEGORY	A	B	C	D
LPV DA	351/40	200 (200-3/4)	401/40	250 (300-3/4)
LNAV/VNAV DA	404/40		253 (300-3/4)	
LNAV MDA	600/40	449 (500-3/4)	600/60	449 (500-1 1/4)
CIRCLING	700-1	549 (600-1)	800-1 3/4 649 (700-1 3/4)	920-2 1/2 769 (800-2 1/2)

AK, 31 DEC 2020 to 25 FEB 2021

AK, 31 DEC 2020 to 25 FEB 2021