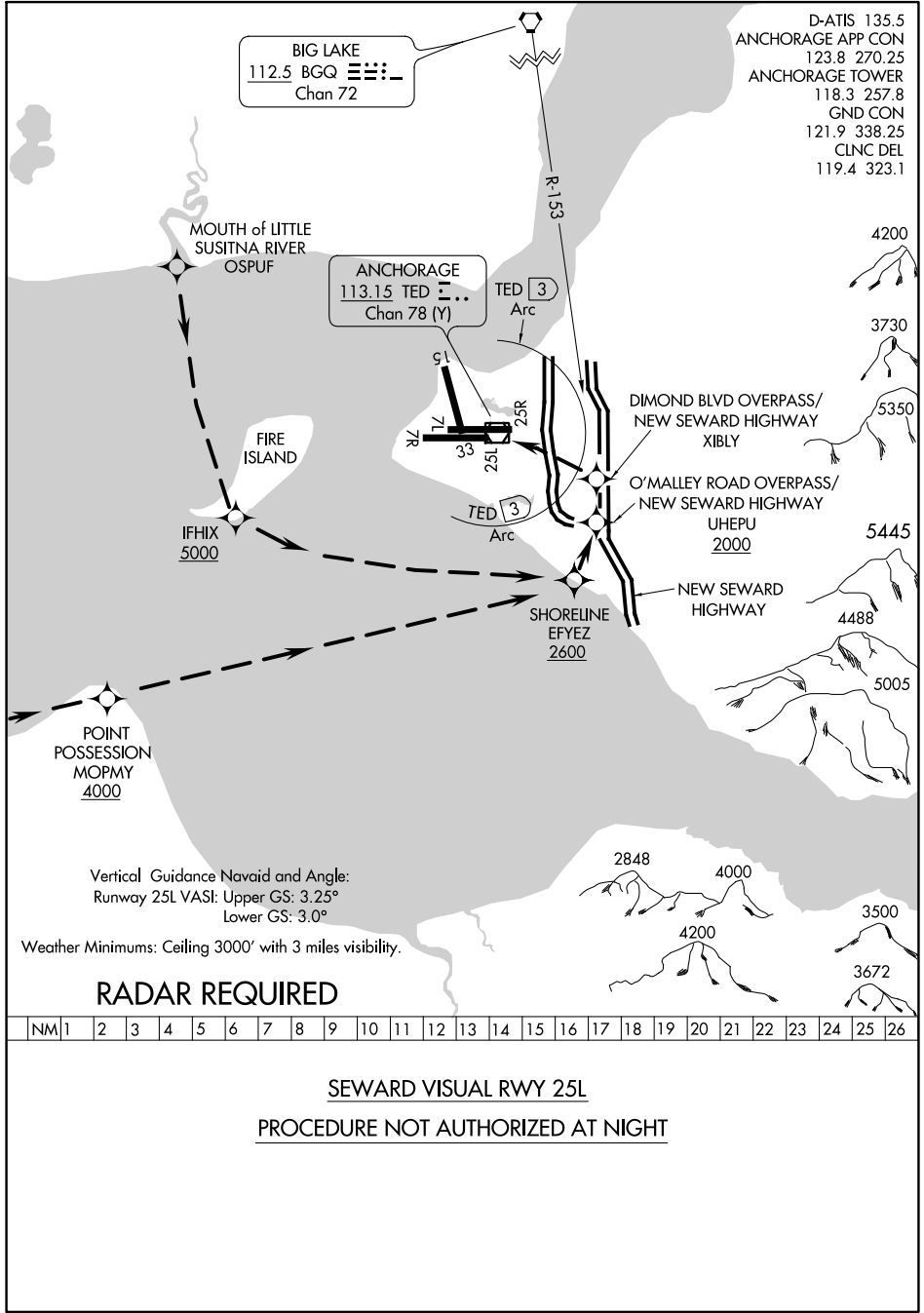


SEWARD VISUAL RWY 25L

TED STEVENS ANCHORAGE INTL (ANC) (PANC)
AL-1500 (FAA) ANCHORAGE, ALASKA



D-ATIS 135.5
 ANCHORAGE APP CON 123.8 270.25
 ANCHORAGE TOWER 118.3 257.8
 GND CON 121.9 338.25
 CLNC DEL 119.4 323.1

ANCHORAGE
 113.15 TED
 Chan 78 (Y)

BIG LAKE
 112.5 BGQ
 Chan 72

Vertical Guidance Navaid and Angle:
 Runway 25L VASI: Upper GS: 3.25°
 Lower GS: 3.0°

Weather Minimums: Ceiling 3000' with 3 miles visibility.

RADAR REQUIRED

NM	1	2	3	4	5	6	7	8	9	10	11	12	13	14	15	16	17	18	19	20	21	22	23	24	25	26
----	---	---	---	---	---	---	---	---	---	----	----	----	----	----	----	----	----	----	----	----	----	----	----	----	----	----

SEWARD VISUAL RWY 25L
PROCEDURE NOT AUTHORIZED AT NIGHT

AK, 31 DEC 2020 to 25 FEB 2021

AK, 31 DEC 2020 to 25 FEB 2021

SEWARD VISUAL RWY 25L

61°10'N-150°00'W ANCHORAGE, ALASKA
TED STEVENS ANCHORAGE INTL (ANC) (PANC)