

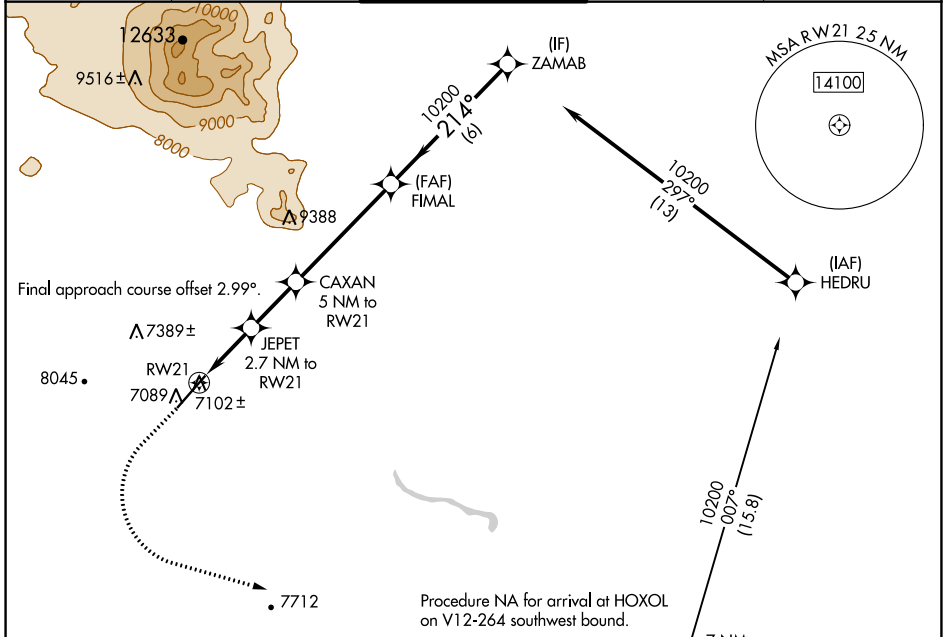
WAAS CH 99341 W21A	APP CRS 214°	Rwy Idg TDZE 7000 Apt Elev 7014
--	------------------------	---

RNAV (GPS) RWY 21

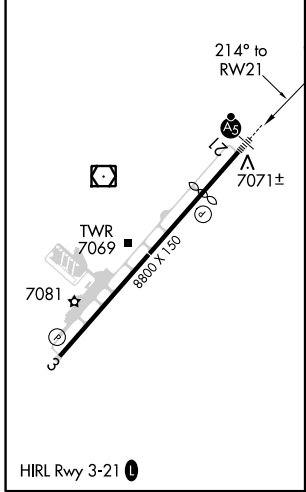
FLAGSTAFF PULLIAM (F'L.G)

<p>⚠ For uncompensated Baro-VNAV systems, LNAV/VNAV NA below -19 °C (2°F) or above 44°C (111°F). DME/DME RNP-0.3 NA. For inop ALS, increase LPV all Cats visibility to ¾ SM.</p>	<p>MALSR</p>	<p>MISSED APPROACH: Climb to 7500 then climbing left turn to 10800 direct HOXOL and hold.</p>
---	--------------	---

ATIS 125.8	PHOENIX APP CON 126.375 236.775	FLAGSTAFF TOWER ★ 134.55 (CTAF) 239.25	GND CON 121.9	UNICOM 122.95
----------------------	---	--	-------------------------	-------------------------



ELEV 7014	D	TDZE 7003
-----------	----------	-----------



	7500	10800	HOXOL	JEPET 2.7 NM to RW21	CAXAN 5 NM to RW21	FIMAL 10200	ZAMAB 10200
*LNAV only				*1 NM to RW21			
						8640*	GP 3.00° TCH 52
						7900*	
CATEGORY			A	B	C	D	
LPV DA				7258-½	255 (300-½)		
LNAV/VNAV DA				7319-5/8	316 (400-5/8)		
LNAV MDA			7360-½	357 (400-½)	7360-5/8	357 (400-5/8)	
C CIRCLING	7520-1 506 (600-1)	7560-1 546 (600-1)		8100-3 1086 (1100-3)	8560-3 1546 (1600-3)		

SW-4, 31 DEC 2020 to 28 JAN 2021

SW-4, 31 DEC 2020 to 28 JAN 2021