

VOR/DME FLG 113.85 Chan 85(Y)	APP CRS 236°	Rwy Idg 7000 TDZE 7003 Apt Elev 7014
---	------------------------	---

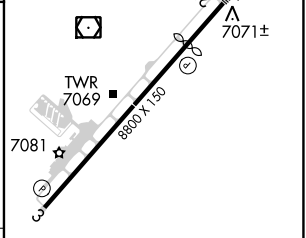
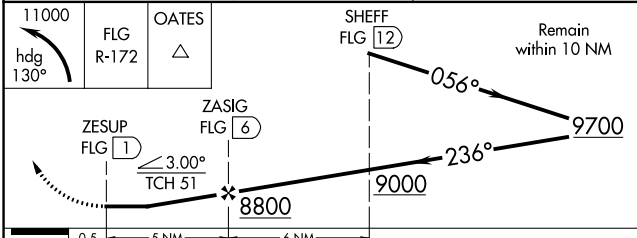
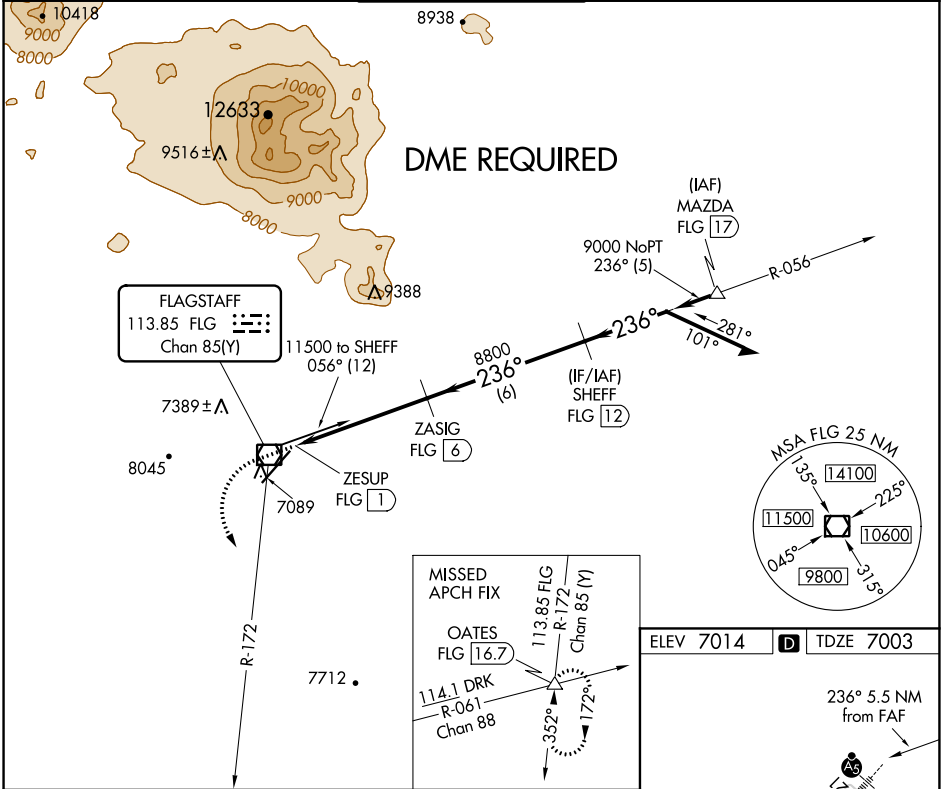
VOR RWY 21

FLAGSTAFF PULLIAM (FLG)

⚠ Rwy 21 helicopter visibility reduction below 1 SM NA. DME required. Inop table does not apply to S-21 Cats A/B. Night landing: Rwy 21, operational VGSI required, remain on or above VGSI glidepath until threshold.

MALSRS
AS
MISSED APPROACH: Climbing left turn to 11000 on heading 130° and FLG R-172 to OATES INT/16.7 DME, continue climb-in-hold.

ATIS 125.8	PHOENIX APP CON 126.375 236.775	FLAGSTAFF TOWER ★ 134.55 (CTAF) 239.25	GND CON 121.9	UNICOM 122.95
----------------------	---	--	-------------------------	-------------------------



11000 hdg 130°	FLG R-172	OATES △	SHEFF FLG 12 Remain within 10 NM			
ZESUP FLG 1	ZASIG FLG 6	3.00° TCH 51	8800	9000	9700	
0.5		5 NM		6 NM		
CATEGORY	A	B	C	D		
S-21	7520-1		517 (600-1)			
CIRCLING	7520-1 506 (600-1)	7560-1 546 (600-1)	8100-3 1086 (1100-3)	8560-3 1546 (1600-3)		

HIRL Rwy 3-21

SW-4, 31 DEC 2020 to 28 JAN 2021

SW-4, 31 DEC 2020 to 28 JAN 2021