

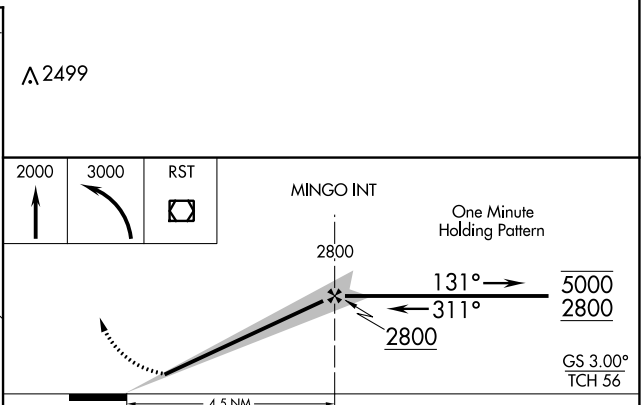
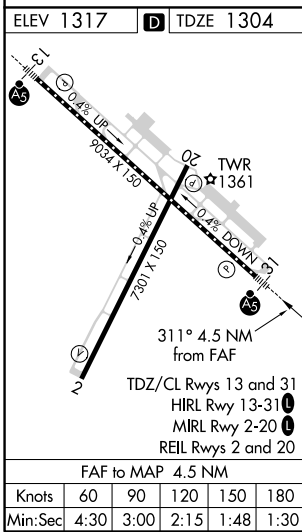
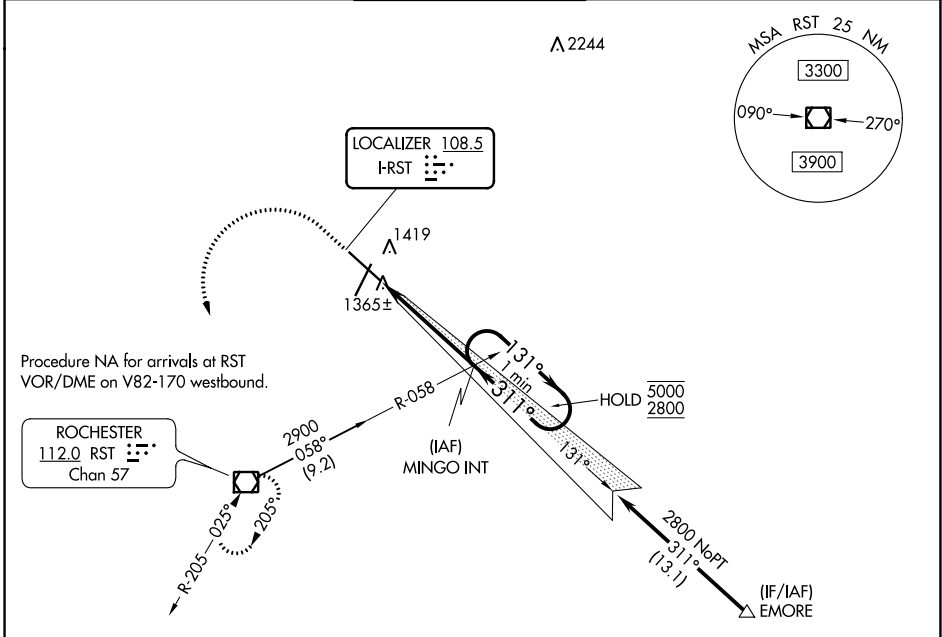
COPTER ILS Y or LOC Y RWY 31

ROCHESTER INTL (RST)

LOC I-RST 108.5	APP CRS 311°	Rwy Idg TDZE Apt Elev	9033 1304 1317
---------------------------	------------------------	-----------------------------	---

 	For inop ALS, increase visibility to 1 mile.		MISSED APPROACH: Climb to 2000 then climbing left turn to 3000 direct RST VOR/DME and hold.

ATIS 120.5	ROCHESTER APP CON* 119.8 251.125	ROCHESTER TOWER* 118.3 (CTAF) 257.8	GND CON 121.9	UNICOM 122.95
----------------------	--	---	-------------------------	-------------------------



CATEGORY	COPTER	
H-ILS 31	1504/12	200 (200-¼)
H-LOC 31	1620/12	316 (400-¼)

COPTER ILS Y or LOC Y RWY 31

NC-1, 31 DEC 2020 to 28 JAN 2021

NC-1, 31 DEC 2020 to 28 JAN 2021