

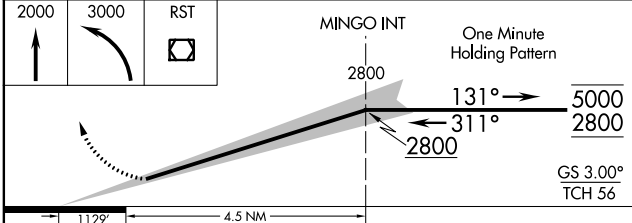
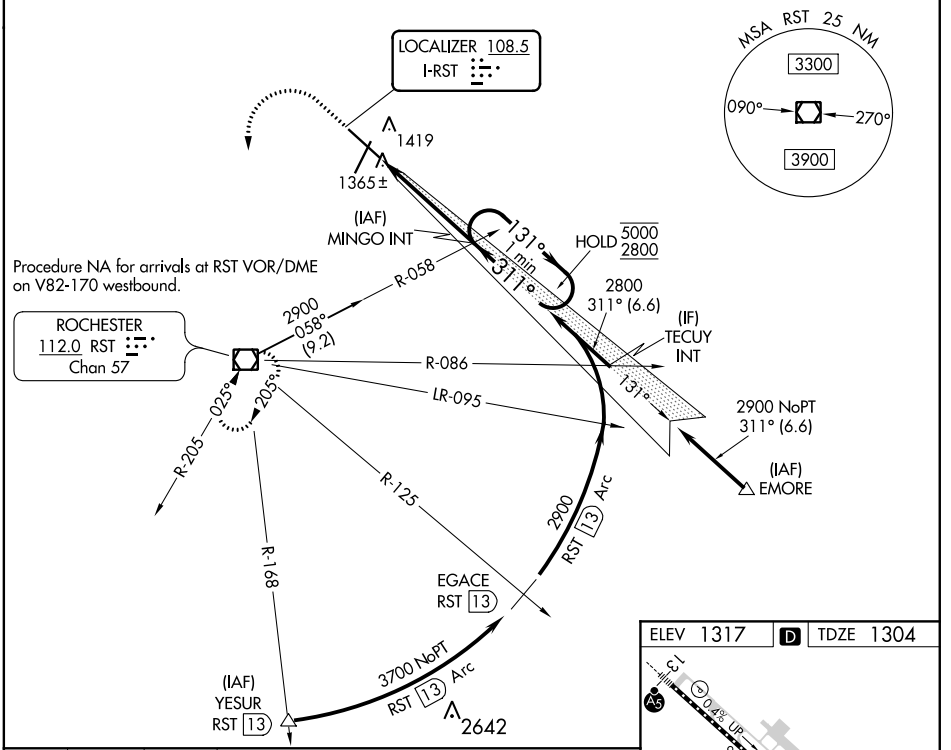
LOC I-RST <b>108.5</b>	APP CRS <b>311°</b>	Rwy Idg <b>9033</b> TDZE <b>1304</b> Apt Elev <b>1317</b>
---------------------------	------------------------	---

# ILS Z RWY 31 (SA CAT I & II)

ROCHESTER INTL (RST)

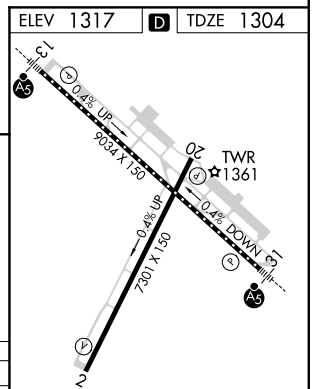
<p><b>SA CAT I</b> : Requires specific OPSPEC, MSPEC, or LOA approval and use of HUD to DH.  <b>SA CAT II</b> : Reduced Lighting: Requires specific OPSPEC, MSPEC, or LOA approval and use of autoland or HUD to touchdown.                  Procedure NA when tower closed.</p>	<p><b>MALSR</b></p>	<p><b>MISSED APPROACH</b>: Climb to 2000 then climbing left turn to 3000 direct RST VOR/DME and hold.</p>
--	---------------------	---

<p>ATIS <b>120.5</b></p>	<p>ROCHESTER APP CON* <b>119.8 251.125</b></p>	<p>ROCHESTER TOWER* <b>118.3 (CTAF) 257.8</b></p>	<p>GND CON <b>121.9</b></p>	<p>UNICOM <b>122.95</b></p>
------------------------------	--	---	---------------------------------	---------------------------------



CATEGORY	A	B	C	D
S-ILS 31	SA CAT I	RA 204/14	150 DA 1454	
S-ILS 31	SA CAT II	RA 104/12	100 DA 1404	

**SA CATEGORY I & II ILS - SPECIAL AIRCREW & AIRCRAFT CERTIFICATION REQUIRED**



TDZ/CL Rwys 13 and 31  
 HIRL Rwy 13-31  
 MIRL Rwy 2-20  
 REIL Rwys 2 and 20

NC-1, 31 DEC 2020 to 28 JAN 2021

NC-1, 31 DEC 2020 to 28 JAN 2021