

WAAS CH <b>65911</b> <b>W26A</b>	APP CRS <b>256°</b>	Rwy Idg TDZE Apt Elev	<b>5418</b> <b>1871</b> <b>1881</b>
--	------------------------	-----------------------------	---

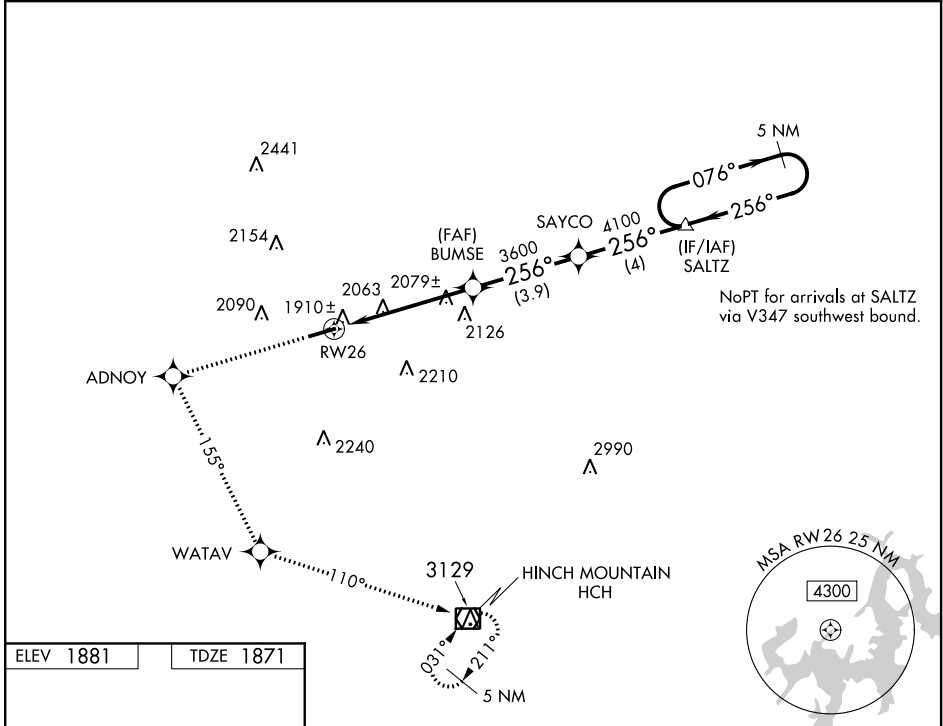
# RNAV (GPS) RWY 26

CROSSVILLE MEMORIAL-WHITSON FIELD (CSV)

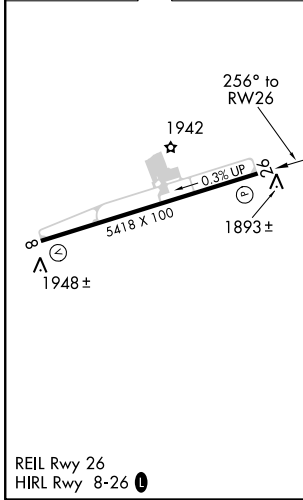
For uncompensated Baro-VNAV systems, LNAV/VNAV NA below -18°C (0°F) or above 45°C (113°F). DME/DME RNP-0.3 NA.

MISSED APPROACH: Climb to 5000 direct ADNOY and left turn on track 155° to WATAV and on track 110° to HCH VOR/DME and hold.

ASOS <b>120.625</b>	ATLANTA CENTER <b>133.6 254.3</b>	UNICOM <b>122.7 (CTAF) 0</b>
------------------------	--------------------------------------	---------------------------------



ELEV <b>1881</b>	TDZE <b>1871</b>
------------------	------------------



5000	ADNOY	WATAV	HCH	5 NM Holding Pattern
↑	✧	tr 155°	✧	SALTZ
*LNAV only.				
*1.3 NM to RW26		BUMSE 3600	SAYCO 4100	4700
RW26		3600	256°	GP 3.00° TCH 60
1.3 NM		3.9 NM	3.9 NM	4 NM
CATEGORY	A	B	C	D
LPV DA	2071-3/4 200 (200-3/4)			
LNAV/VNAV DA	2170-1 299 (300-1)			
LNAV MDA	2440-1 569 (600-1)		2440-1 5/8 569 (600-1 5/8)	
CIRCLING	2440-1 559 (600-1)		2440-1 1/2 559 (600-1 1/2) 2540-2 639 (700-2)	

SE-1, 31 DEC 2020 to 28 JAN 2021

SE-1, 31 DEC 2020 to 28 JAN 2021