

LOC/DME I-VSF <b>111.3</b> Chan <b>50</b>	APP CRS <b>051°</b>	Rwy Idg TDZE Apt Elev	<b>5501</b> <b>575</b> <b>577</b>
---	------------------------	-----------------------------	---

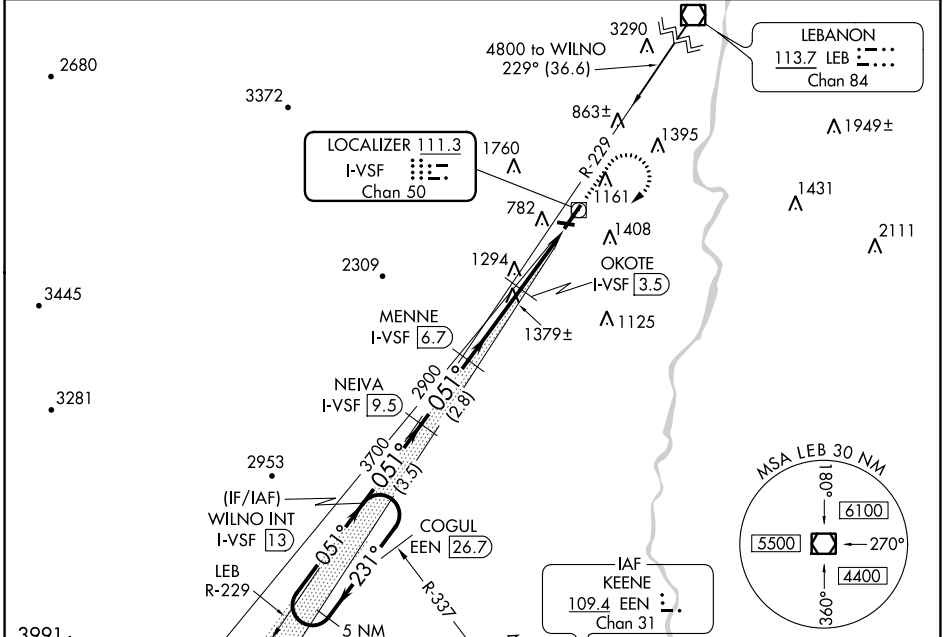
# LOC/DME RWY 5

HARTNESS STATE (SPRINGFIELD) (VSF')

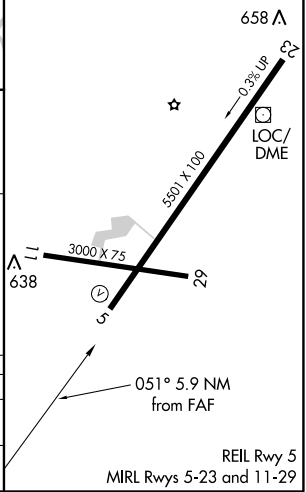
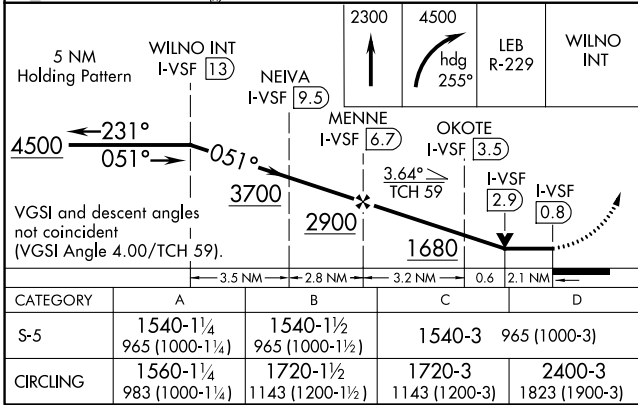
**V** Helicopter visibility reduction below 3/4 SM NA. Circling to Rwy 11, 23, 29 NA at night.  
**NA**  
-24°C

**MISSED APPROACH:** Climb to 2300 then climbing right turn to 4500 via heading 255° and LEB VOR/DME R-229 to WILNO INT/I-VSF 13 DME and hold, continue climb-in-hold to 4500.

ASOS <b>121.425</b>	BOSTON CENTER <b>134.7 381.4</b>	UNICOM <b>122.8 (CTAF)</b>
------------------------	-------------------------------------	-------------------------------



ELEV 577	TDZE 575
----------	----------



NE-1, 31 DEC 2020 to 28 JAN 2021

NE-1, 31 DEC 2020 to 28 JAN 2021