

APP CRS	Rwy Idg	<b>4204</b>
<b>088°</b>	TDZE	<b>818</b>
	Apt Elev	<b>835</b>

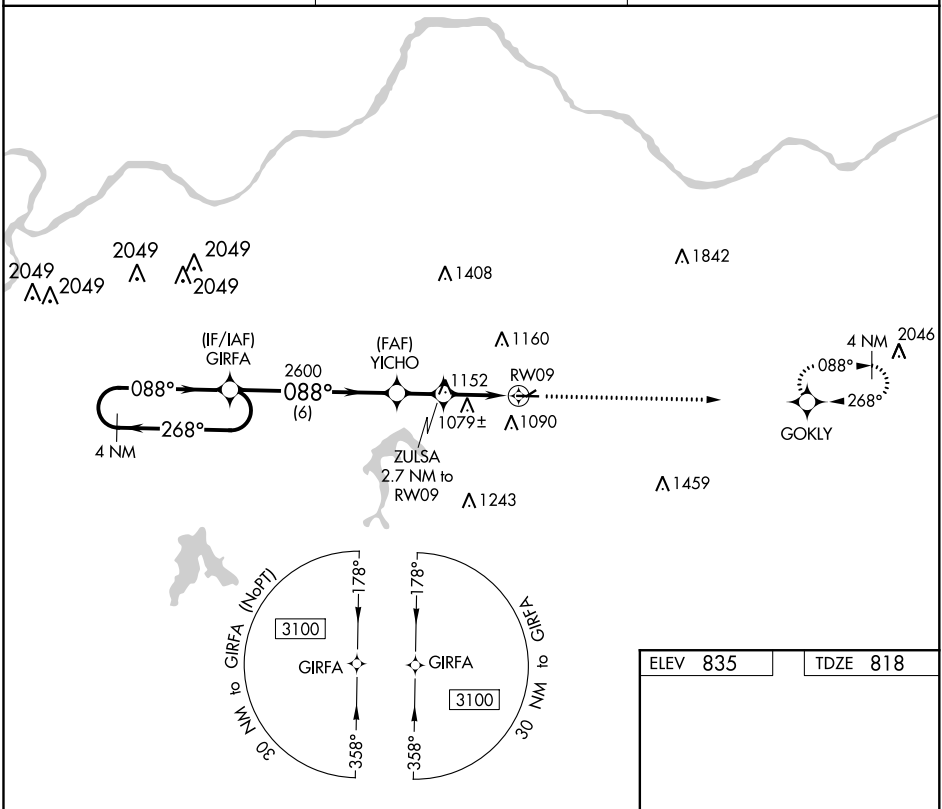
# RNAV (GPS) RWY 9

EAST KANSAS CITY (3GV)

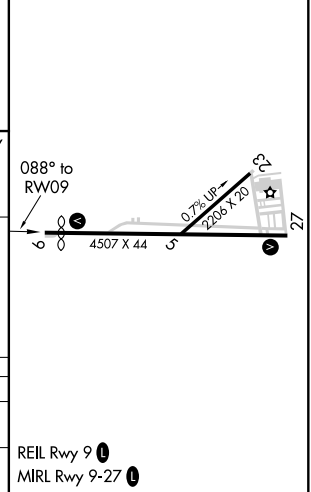
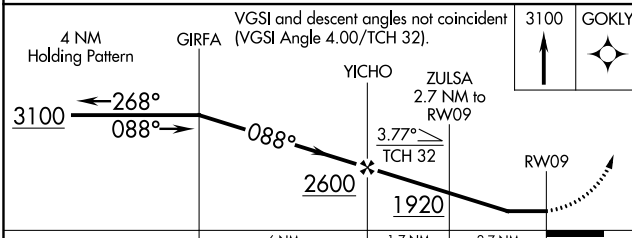
**NA** DME/DME RNP-0.3 NA. Helicopter visibility reduction below 1 SM NA. Procedure NA at night. Use Charles B Wheeler Downtown altimeter setting.

MISSED APPROACH: Climb to 3100 direct GOKLY and hold.

KANSAS CITY APP CON <b>118.4 307.35</b>	CLNC DEL <b>121.3</b>	UNICOM <b>122.8 (CTAF)</b>
--	--------------------------	-------------------------------



ELEV 835	TDZE 818
----------	----------



CATEGORY	A	B	C	D
LNVA MDA	1400-1	582 (600-1)		NA
CIRCLING	1460-1	625 (700-1)		NA

NC-3, 31 DEC 2020 to 28 JAN 2021

NC-3, 31 DEC 2020 to 28 JAN 2021