

LOC/DME I-RLU 110.5 Chan 42	APP CRS 047°	Rwy Idg 5500 TDZE 309 Apt Elev 333
---	------------------------	---

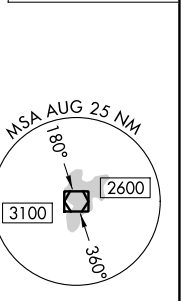
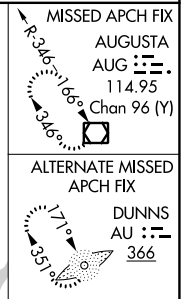
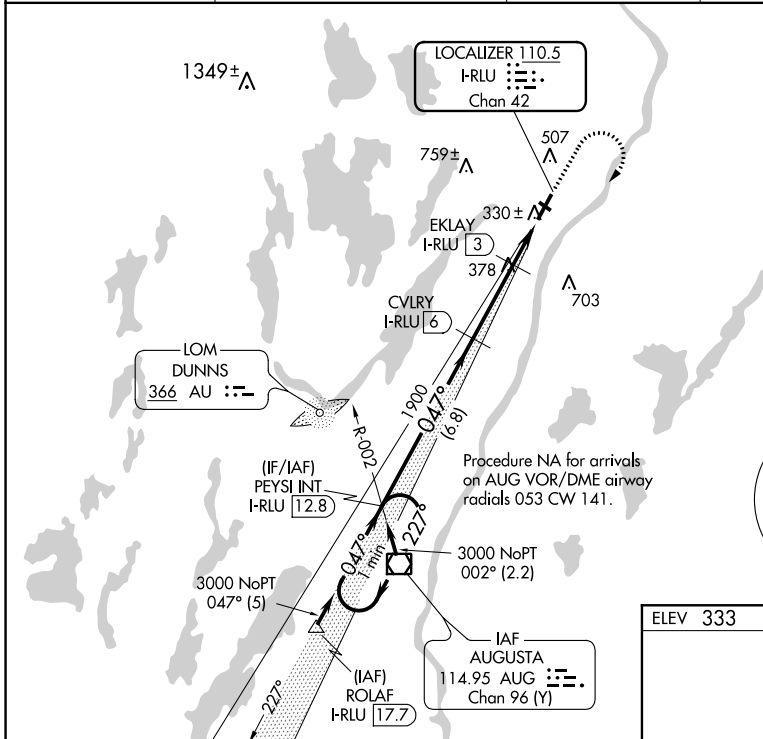
ILS or LOC/DME RWY 5

WATERVILLE ROBERT LAFLEUR (WVL)

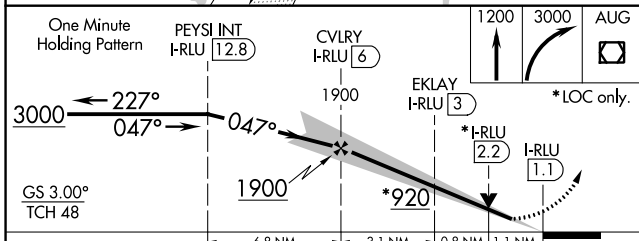
⚠ Night landing; Rwy 14 NA. Helicopter visibility reduction below 3/4 SM NA. VDP NA when using Augusta altimeter setting. When local altimeter setting not received, use Augusta altimeter setting and increase S-ILS 5 DA to 544; increase all MDA 40 feet and S-LOC 5 Cats C/D visibility 1/4 mile. Inop table does not apply to S-ILS 5. For inop MALSF, increase S-LOC 5 Cat D visibility to 1 mile. For inop MALSF, when using Augusta altimeter setting, increase S-ILS 5 all Cats visibility to 1/2 mile and S-LOC 5 Cat C/D visibility to 1 1/2 mile.

MALSF
MISSED APPROACH: Climb to 1200 then climbing right turn to 3000 direct AUG VOR/DME and hold.

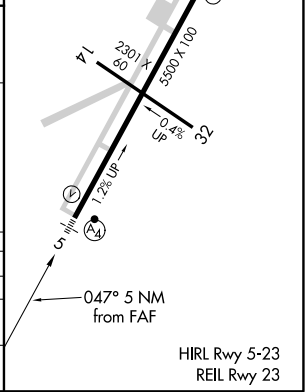
AWOS-3PT 118.375	PORTLAND APP CON ★ 128.35 299.2	CLNC DEL 124.6 299.2	UNICOM 122.7 (CTAF) 0
----------------------------	---	--------------------------------	---------------------------------



ELEV 333	TDZE 309
----------	----------



CATEGORY	A	B	C	D
S-ILS 5		509-3/4 200 (200-3/4)		
S-LOC 5		680-3/4 371 (400-3/4)		
CIRCLING	860-1 527 (600-1)		860-1 1/2 527 (600-1 1/2)	900-2 567 (600-2)



NE-1, 31 DEC 2020 to 28 JAN 2021

NE-1, 31 DEC 2020 to 28 JAN 2021