

WAAS CH 63100 W23A	APP CRS 227°	Rwy Idg TDZE 333 Apt Elev 333
--	------------------------	---

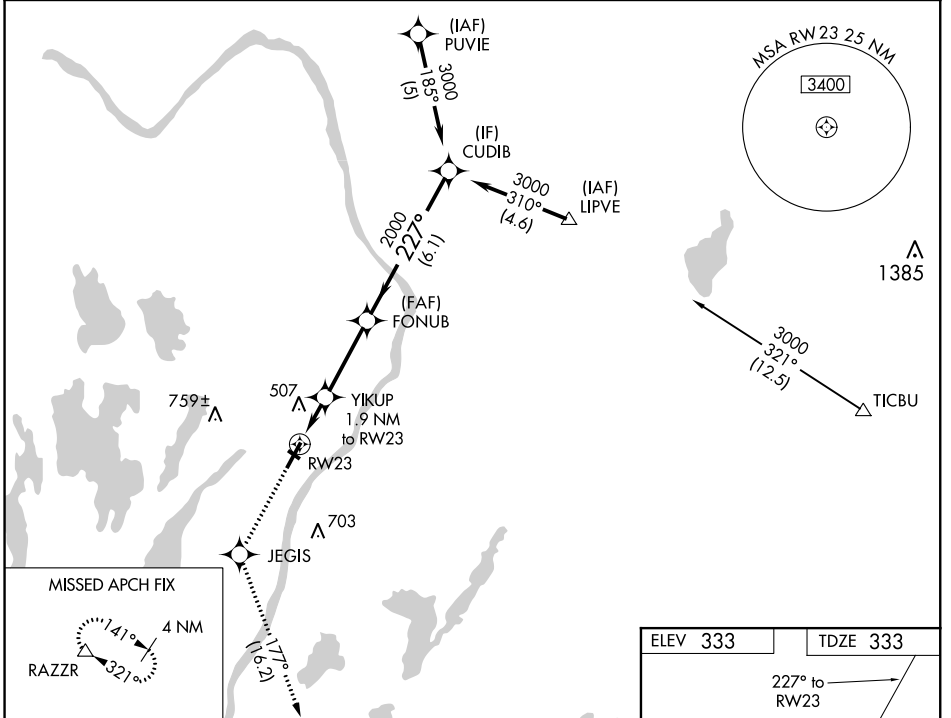
RNAV (GPS) RWY 23

WATERVILLE ROBERT LAFLEUR (WVL)

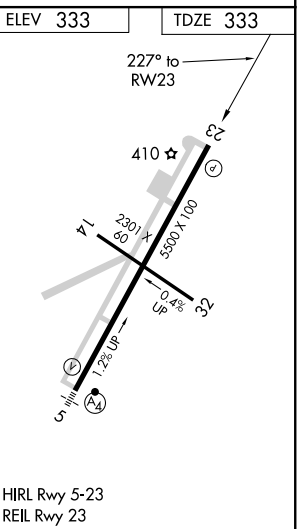
⚠ Circling to Rwy 14 and 32 NA at night. DME/DME RNP-0.3 NA. When local altimeter setting not received, use Augusta altimeter setting and increase LPV DA to 618 feet and all MDA 40 feet; increase LPV all Cats and LNAV Cat C visibility ¼ mile. VDP NA when using Augusta altimeter setting.

⚠ MISSED APPROACH: Climb to 3000 direct JEGIS and via 177° track to RAZZR and hold.

AWOS-3PT 118.375	PORTLAND APP CON ★ 128.35 299.2	CLNC DEL 124.6 299.2	UNICOM 122.7 (CTAF) 0
----------------------------	---	--------------------------------	--



3000	JEGIS	RAZZR	CUDIB	
↑	⬠	△	3000	
*LNAV only.		tr 177°	Procedure Turn NA	
RWY 23		*1.4 NM to RWY 23	GP 3.00° TCH 45	
*980		YIKUP 1.9 NM to RWY 23	2000	
1.4 NM		*1.4 NM to RWY 23	VGSI and RNAV glidepath not coincident (VGSI Angle 3.00/TCH 40).	
0.5 NM		FONUB	6.1 NM	
CATEGORY	A	B	C	D
LPV DA	583-¾ 250 (300-¾)			
LNAV/VNAV DA	NA			
LNAV MDA	800-1	467 (500-1)	800-1½	800-1½
CIRCLING	860-1	527 (600-1)	860-1½	900-2
		527 (600-1½)	567 (600-2)	



NE-1, 31 DEC 2020 to 28 JAN 2021

NE-1, 31 DEC 2020 to 28 JAN 2021