

APP CRS <b>023°</b>	Rwy Idg <b>N/A</b>
	TDZE <b>N/A</b>
	Apt Elev <b>1040</b>

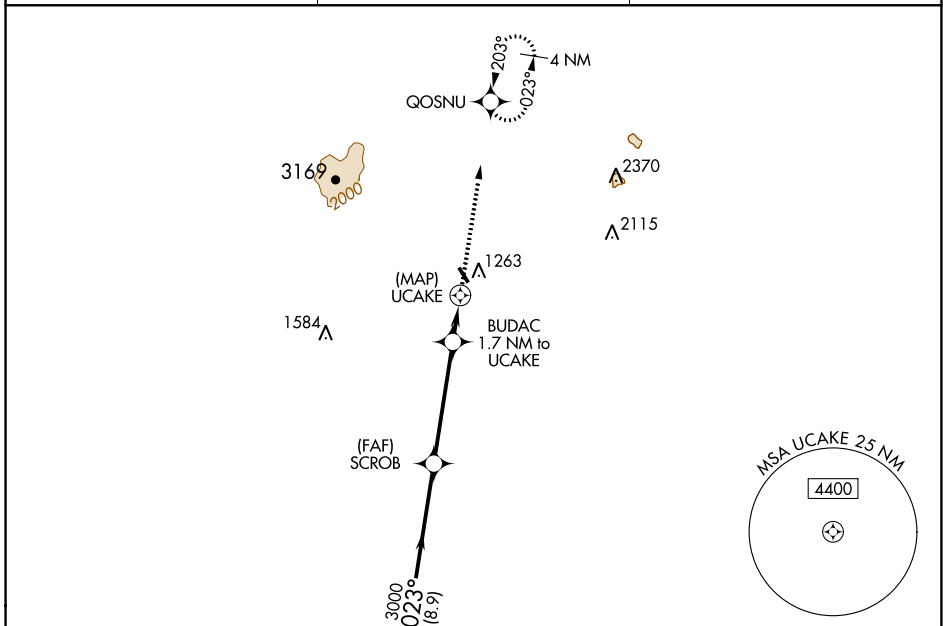
# RNAV (GPS)-B

JAFFREY AIRPORT-SILVER RANCH (A/FN)

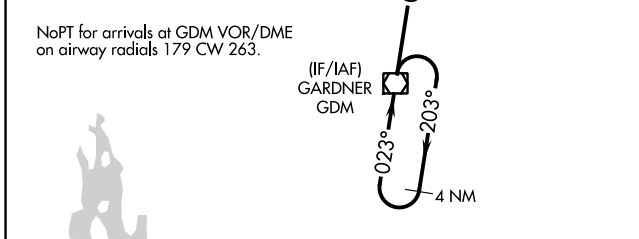
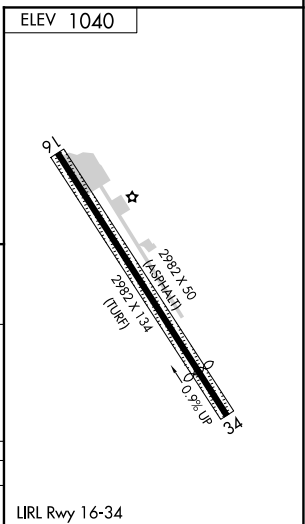
**⚠** When local altimeter setting not received, use Keene altimeter setting and increase all MDA 120 feet and all Cats visibility ¼ mile. DME/DME RNP-0.3 NA. Procedure NA at night. Visibility reduction by helicopters NA.

**⚠** MISSED APPROACH: Climb to 3400 direct QOSNU and hold.

ASOS <b>135.875</b>	BOSTON CENTER <b>123.75 338.2</b>	UNICOM <b>122.8 (CTAF)</b>
------------------------	--------------------------------------	-------------------------------



NoPT for arrivals at GDM VOR/DME on airway radials 179 CW 263.



4 NM Holding Pattern	* 2020 when using Keene altimeter setting.	3400	QOSNU
GARDNER GDM	SCROB	BUDAC 1.7 NM to UCAKE	UCAKE
3000	3000	* 1900	
8.9 NM	4.4 NM	1.7 NM	0.5 NM

CATEGORY	A	B	C	D
CIRCLING	1760-1	720 (800-1)	NA	NA

LIRL Rwy 16-34

NE-1, 31 DEC 2020 to 28 JAN 2021

NE-1, 31 DEC 2020 to 28 JAN 2021