

VOR/DME GDM <b>110.6</b> Chan <b>43</b>	APP CRS <b>023°</b>	Rwy Idg TDZE Apt Elev <b>N/A</b> <b>N/A</b> <b>1040</b>
---	------------------------	--

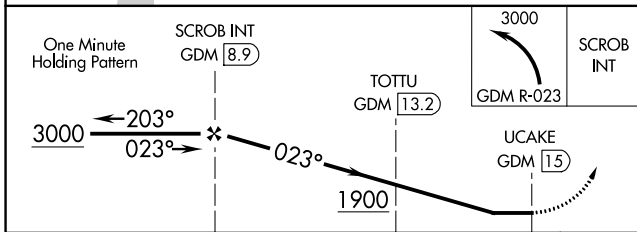
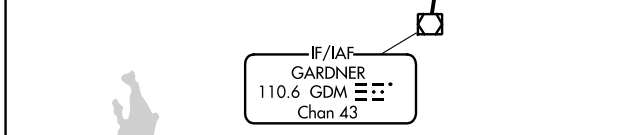
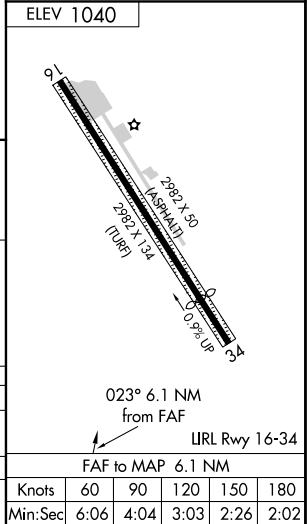
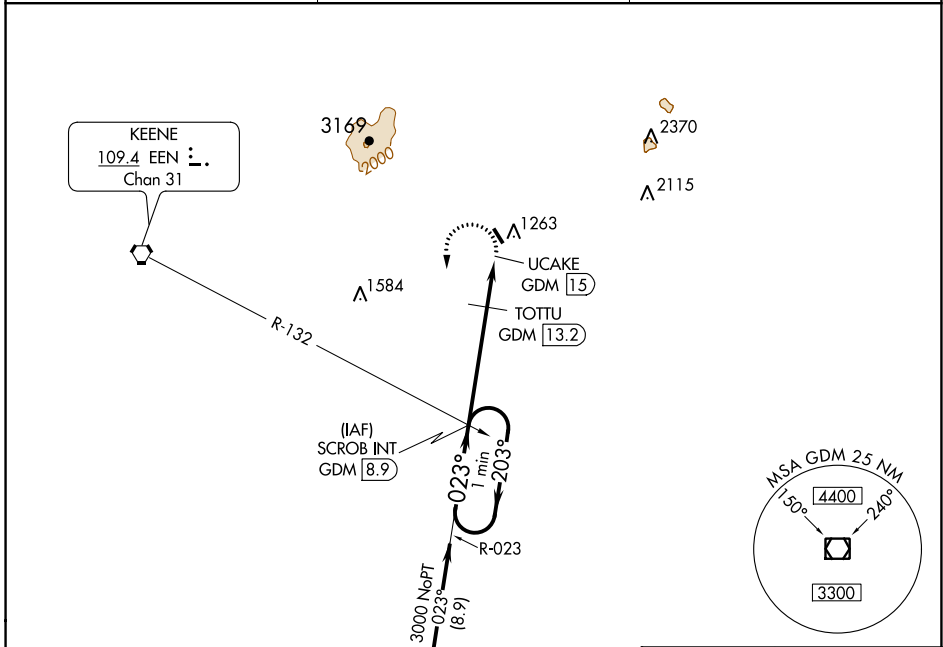
# VOR-A

JAFFREY AIRPORT-SILVER RANCH (A/FN)

**⚠** Visibility reduction by helicopters NA. When local altimeter setting not received, use KEENE altimeter setting and increase all MDA 120 feet; increase Cat B and TOTTU fix minimums all Cats visibility 1/4 mile. Procedure NA at night.

**⚠** MISSED APPROACH: Climbing left turn to 3000 on GDM VOR/DME R-023 to SCROB INT/GDM 8.9 DME and hold.

ASOS <b>135.875</b>	BOSTON CENTER <b>123.75 338.2</b>	UNICOM <b>122.8 (CTAF)</b>
------------------------	--------------------------------------	-------------------------------



CATEGORY	A	B	C	D
CIRCLING	1900-1 1/4	860 (900-1 1/4)		NA
TOTTU FIX MINIMUMS				
CIRCLING	1780-1	740 (800-1)		NA

FAF to MAP 6.1 NM					
Knots	60	90	120	150	180
Min:Sec	6:06	4:04	3:03	2:26	2:02

NE-1, 31 DEC 2020 to 28 JAN 2021

NE-1, 31 DEC 2020 to 28 JAN 2021