

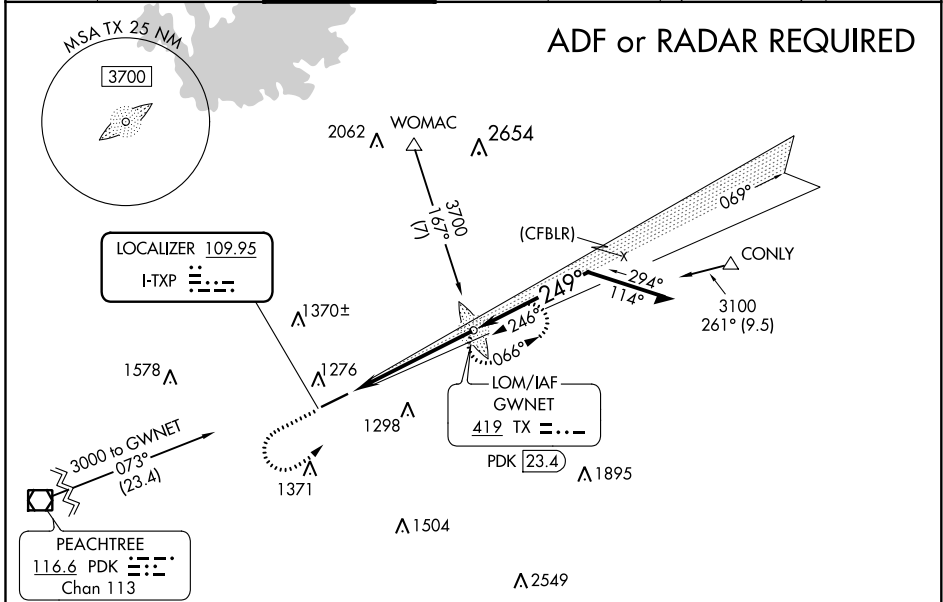
LOC I-TXP 109.95	APP CRS 249°	Rwy Idg TDZE Apt Elev	6000 1038 1062
----------------------------	------------------------	-----------------------------	---

ILS or LOC RWY 25

GWINNETT COUNTY-BRISCOE FIELD (LZU)

<p>⚠ When local altimeter setting not received, use Winder altimeter setting and increase all DA 51 feet, and all MDA 60 feet, increase S-LOC 25 Cat C/D and Circling Cat C/D visibility 1/2 SM. ADF required. For inop MALSR, when using Winder altimeter setting increase S-ILS 25 all Cats visibility to 3/8 SM.</p>		<p>MALSR</p>	<p>MISSED APPROACH: Climb to 1800 then climbing left turn to 3000 direct GWNET LOM and hold.</p>			
ATIS 132.275	ATLANTA APP CON 126.975 239.275	GWINNETT TOWER * 124.1 (CTAF) 0	GND CON 121.8	CLNC DEL 121.8	CLNC DEL 134.0 (When twr closed)	UNICOM 123.05

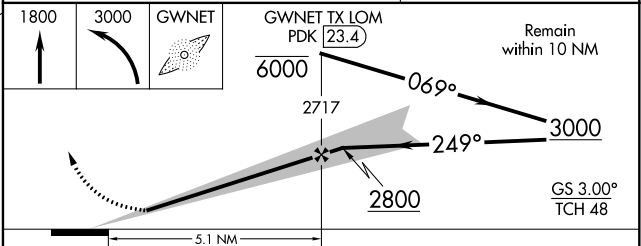
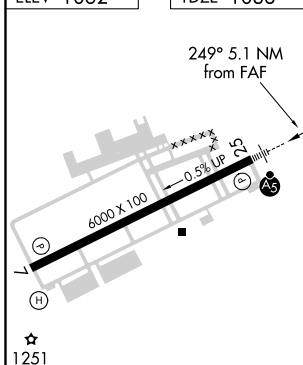
ADF or RADAR REQUIRED



ELEV 1062	TDZE 1038
-----------	-----------

ALTERNATIVE MISSED APCH FIX

GWNET
419 TX **---**
PDK **23.4**



CATEGORY	A	B	C	D
S-ILS 25	1238-1/2		200 (200-1/2)	
S-LOC 25	1540-1/2 502 (500-1/2)		1540-1 502 (500-1)	
CIRCLING	1640-1 578 (600-1)		1640-1 1/2 578 (600-1 1/2) 1700-2 638 (700-2)	

SE-4, 31 DEC 2020 to 28 JAN 2021

SE-4, 31 DEC 2020 to 28 JAN 2021