

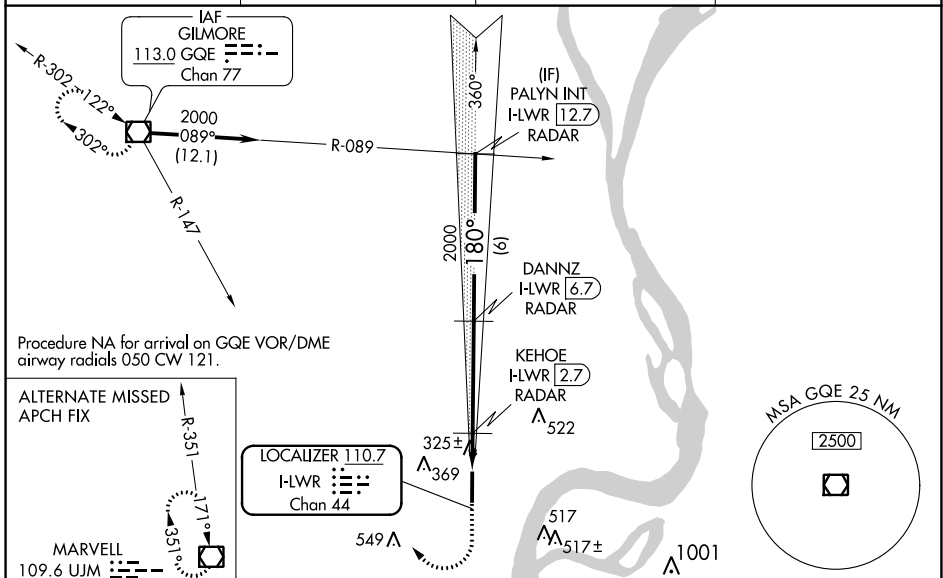
LOC/DME I-LWR <b>110.7</b> Chan <b>44</b>	APP CRS <b>180°</b>	Rwy Idg TDZE <b>213</b> Apt Elev <b>213</b>	<b>6003</b>
---	------------------------	---	-------------

# ILS or LOC RWY 17

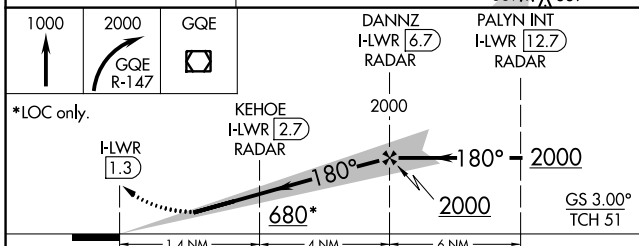
WEST MEMPHIS MUNI (A W M)

DME or RADAR required.	MALSR	MISSED APPROACH: Climb to 1000 then climbing right turn to 2000 on GQE VOR/DME R-147 to GQE VOR/DME and hold.
<p><b>NA</b> For inop ALS, increase S-LOC 17 Cat C/D visibility to 1 1/2 SM and KEHOE FIX MINIMUMS S-LOC 17 Cats C/D visibility to 1 SM.</p>		

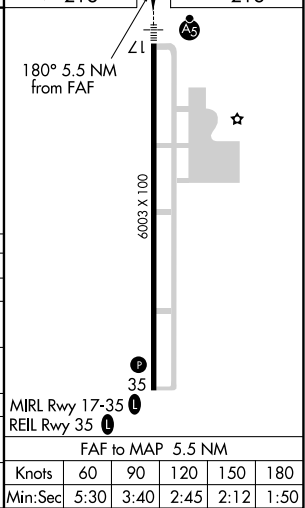
ASOS <b>118.175</b>	MEMPHIS APP CON <b>119.1 291.6</b>	CLNC DEL <b>121.7</b>	UNICOM <b>123.05</b> (CTAF) <b>1</b>
------------------------	---------------------------------------	--------------------------	---



ELEV 213	TDZE 213
----------	----------



CATEGORY	A	B	C	D
S-ILS 17	413-1/2 200 (200-1/2)			
S-LOC 17	680-1/2	467 (500-1/2)	680-1	467 (500-1)
CIRCLING	680-1	467 (500-1)	680-1 1/2 467 (500-1 1/2)	780-2 567 (600-2)
KEHOE FIX MINIMUMS				
S-LOC 17	580-1/2	367 (400-1/2)	580-5/8	367 (400-%)
CIRCLING	640-1 427 (500-1)	680-1 467 (500-1)	680-1 1/2 467 (500-1 1/2)	780-2 567 (600-2)



SC-1, 31 DEC 2020 to 28 JAN 2021

SC-1, 31 DEC 2020 to 28 JAN 2021