

WAAS CH 69316 W17A	APP CRS 180°	Rwy Idg TDZE Apt Elev	6003 213 213
--	------------------------	-----------------------------	---

RNAV (GPS) RWY 17

WEST MEMPHIS MUNI (A W M)

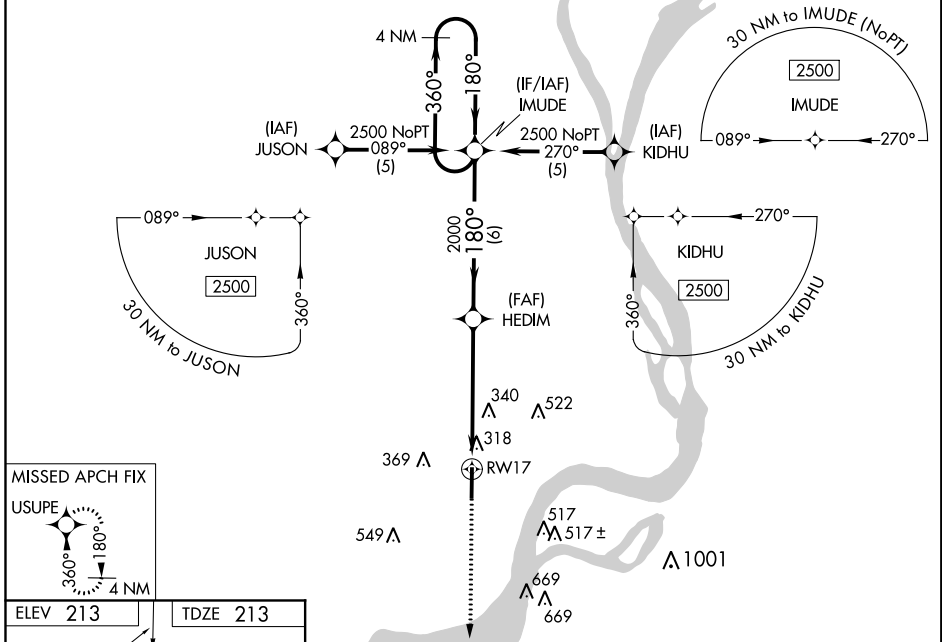
RNP APCH.

⚠ For uncompensated Baro-VNAV systems, LNAV/VNAV NA below -15°C (5°F) or above 48°C (118°F). When local altimeter setting not received, use Memphis Intl altimeter and increase all DA 50 feet and all MDA 60 feet and increase LNAV/VNAV all Cats and LNAV Cat C visibility ¼ mile. Baro-VNAV and VDP NA when using Memphis Intl altimeter setting.

MALSR
A5

MISSED APPROACH:
Climb to 2100 direct USUPE and hold.

ASOS 118.175	MEMPHIS APP CON 119.1 291.6	CLNC DEL 121.7	UNICOM 123.05 (CTAF) 0
------------------------	---------------------------------------	--------------------------	---



MISSED APCH FIX
USUPE

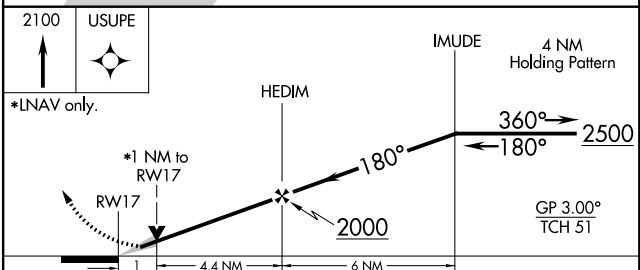
ELEV 213 TDZE 213

180° to RWY 17

6003 x 100

35

MIRL Rwy 17-35 **0**
REIL Rwy 35 **0**



CATEGORY	A	B	C	D
LPV DA		463-½	250 (300-½)	
LNAV/VNAV DA		594-¾	381 (400-¾)	
LNAV MDA	600-½	387 (400-½)	600-⅝ 387 (400-⅝)	600-1 387 (400-1)
CIRCLING	640-1 427 (500-1)	680-1 467 (500-1)	680-1½ 467 (500-1½)	780-2 567 (600-2)

SC-1, 31 DEC 2020 to 28 JAN 2021

SC-1, 31 DEC 2020 to 28 JAN 2021