

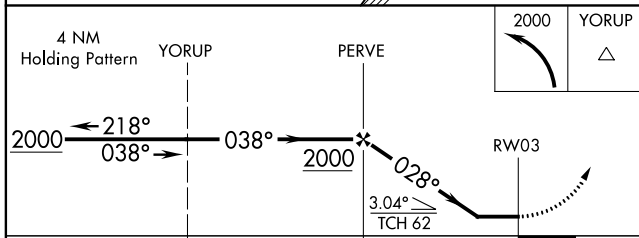
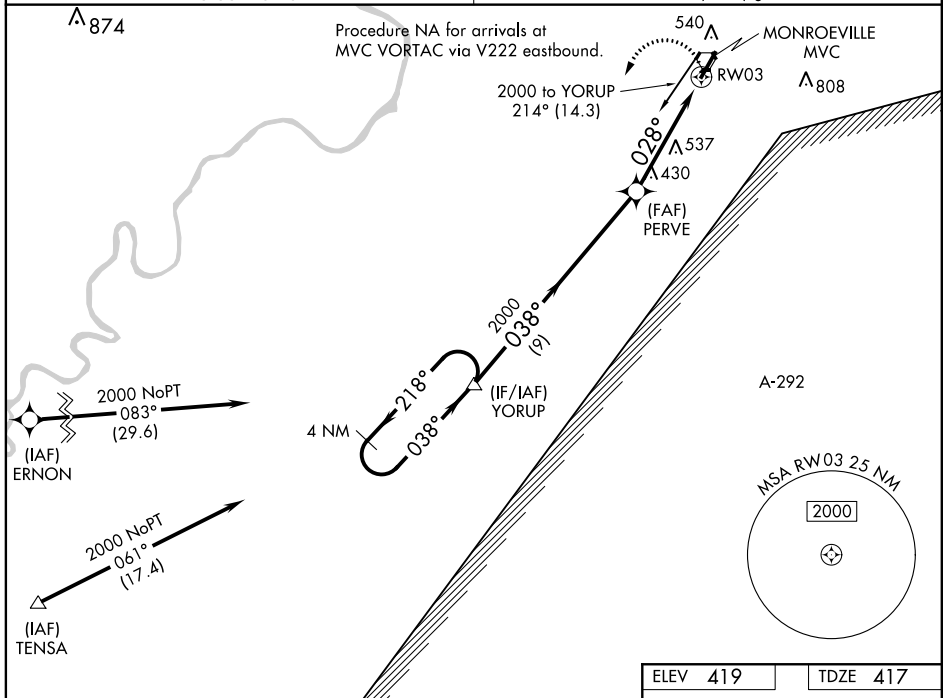
| | | |
|-------------|----------|-------------|
| APP CRS | Rwy Idg | 6028 |
| 028° | TDZE | 417 |
| | Apt Elev | 419 |

RNAV (GPS) RWY 3

MONROE COUNTY AEROPLEX (MVC)

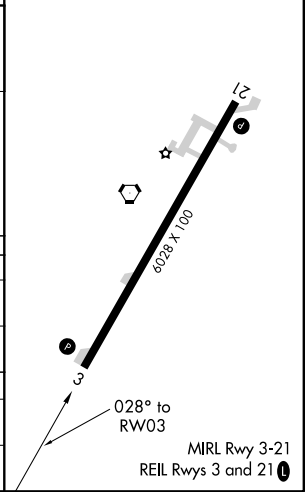
| | | |
|-----------|--|---|
| RNP APCH. | Obtain local altimeter setting on CTAF; when not received, use Evergreen Rgnl/Middleton Field altimeter setting. Procedure NA at night. Rwy 3 helicopter visibility reduction below 1 SM NA. | MISSED APPROACH: Climbing left turn to 2000 direct YORUP and hold. |
|-----------|--|---|

| | |
|---------------------------------------|-------------------------------|
| ATLANTA CENTER 118.55 267.9 | UNICOM 123.0 (CTAF) |
|---------------------------------------|-------------------------------|



| | |
|----------|----------|
| ELEV 419 | TDZE 417 |
|----------|----------|

| CATEGORY | A | B | C | D |
|---|--------------------|---|----------------------|---------------------|
| LNVA MDA | 940-1 523 (600-1) | | 940-1½ 523 (600-1½) | |
| C CIRCLING | 940-1 521 (600-1) | | 940-1½ 521 (600-1½) | 1120 2¼ 701(800-2¼) |
| EVERGREEN RGNL/MIDDLETON FIELD ALTIMETER SETTING MINIMUMS | | | | |
| LNVA MDA | 1000-1 583 (600-1) | | 1000-1¾ 583 (600-1¾) | |
| C CIRCLING | 1000-1 581 (600-1) | | 1000-1¾ 581 (600-1¾) | 1180-2½ 761(800-2½) |



SE-4, 31 DEC 2020 to 28 JAN 2021

SE-4, 31 DEC 2020 to 28 JAN 2021