

|                        |                        |
|------------------------|------------------------|
| APP CRS<br><b>263°</b> | Rwy Idg<br><b>3779</b> |
|                        | TDZE<br><b>632</b>     |
|                        | Apt Elev<br><b>634</b> |

# RNAV (GPS) RWY 26

GRIFFITH-MERRILLVILLE (Ø5C)

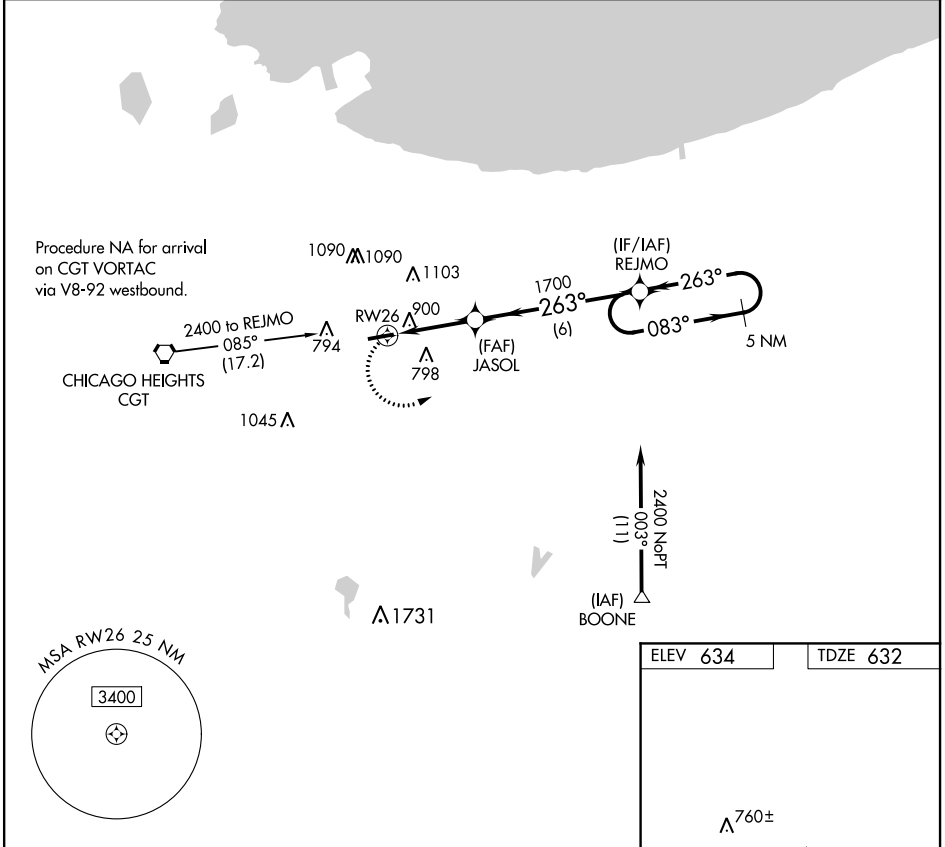
RNP APCH

▼ Obtain local altimeter setting on CTAF; when not received use Chicago Midway  
 ▲ NA Init altimeter setting and increase all MDAs 60 feet. Visibility reduction by  
 helicopters NA. Procedure NA at night.

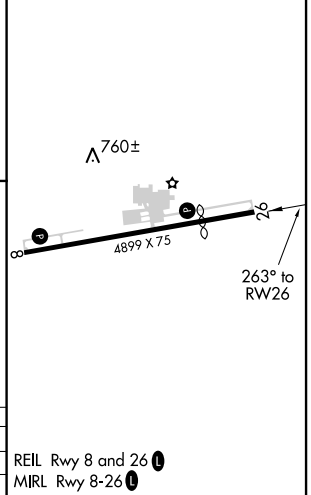
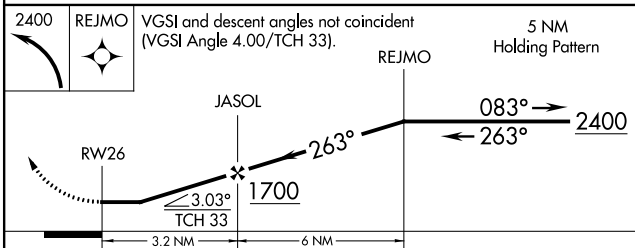
MISSED APPROACH: Climbing left  
 turn to 2400 direct REJMO and hold.

CHICAGO APP CON  
**133.1 285.6**

UNICOM  
**123.0 (CTAF) 0**



|          |          |
|----------|----------|
| ELEV 634 | TDZE 632 |
|----------|----------|



| CATEGORY                                     | A      | B           | C | D  |
|--|--------|-------------|---|----|
| LNNAV MDA                                    | 1160-1 | 528 (600-1) |   | NA |
| <input checked="" type="checkbox"/> CIRCLING | 1200-1 | 566 (600-1) |   | NA |

EC-2, 31 DEC 2020 to 28 JAN 2021

EC-2, 31 DEC 2020 to 28 JAN 2021