

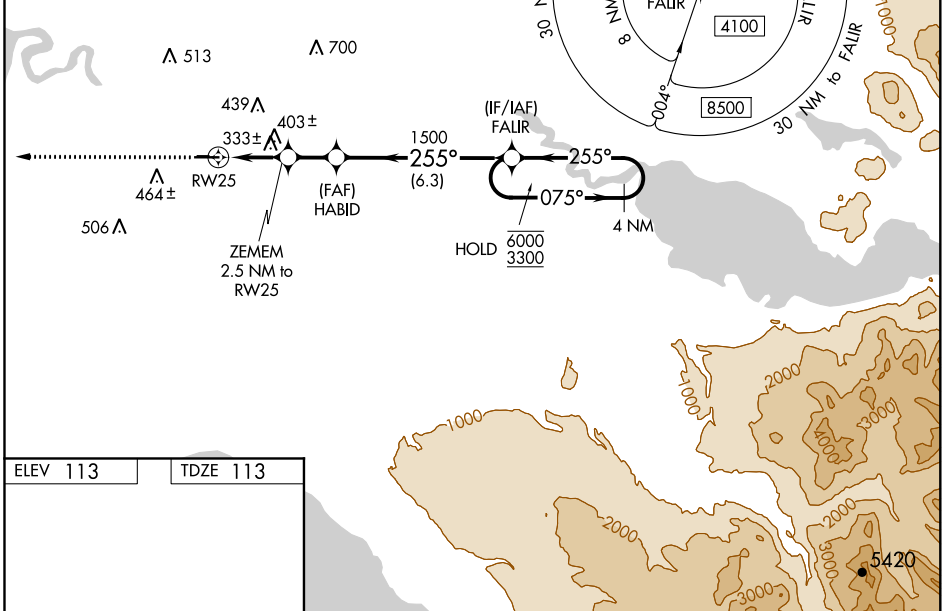
WAAS CH 86236 W25A	APP CRS 255°	Rwy Idg TDZE 113 Apt Elev 113
--	------------------------	---

RNAV (GPS) RWY 25

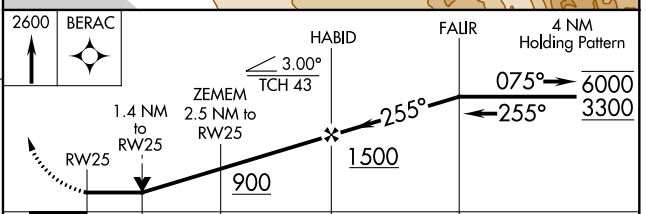
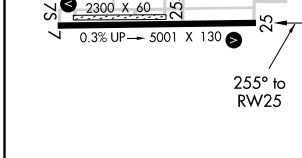
SOLDOTNA (SXQ)(PASX)

RNP APCH.	MISSED APPROACH: Climb to 2600 direct BERAC and hold.
<p>▼ Circling NA to Rwy 7S and 25S. Circling Rwy 7 NA at night.</p> <p>▲ Rwy 25 helicopter visibility reduction below 3/4 SM NA.</p>	

AWOS-3P 135.45	ANCHORAGE CENTER 125.7 379.1	CTAF 122.5
--------------------------	--	----------------------



ELEV 113	TDZE 113
----------	----------



CATEGORY	A	B	C	D
LP MDA	600-1	487 (500-1)	600-1 3/8	487 (500-1 3/8)
LNAV MDA	660-1	547 (600-1)	660-1 5/8	547 (600-1 5/8)
C CIRCLING	740-1 627 (700-1)	780-1 667 (700-1)	820-2 707 (800-2)	980-2 3/4 867 (900-2 3/4)

AK, 31 DEC 2020 to 25 FEB 2021

AK, 31 DEC 2020 to 25 FEB 2021