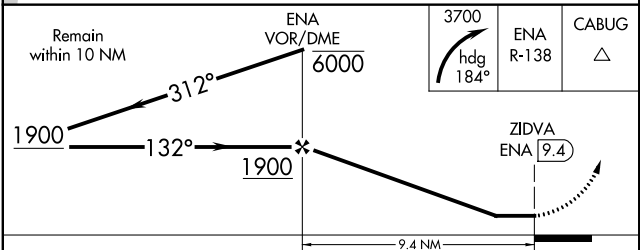
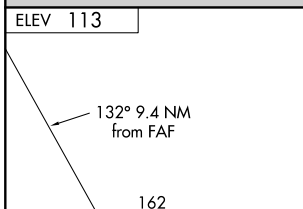
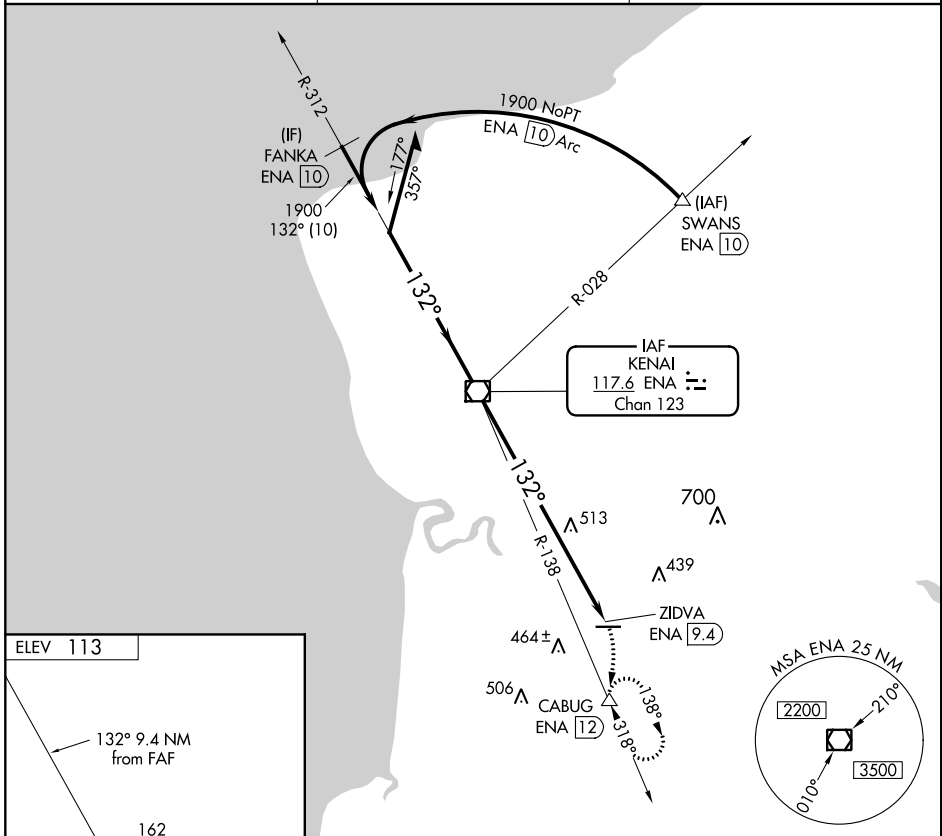


VOR/DME ENA 117.6 Chan 123	APP CRS 132°	Rwy Idg TDZE N/A N/A Apt Elev 113
--	------------------------	--

VOR-A
SOLDOTNA (SXQ)(PASX)

DME required.	MISSED APPROACH: Climbing right turn to 3700 on heading 184° and on ENA R-138 to CABUG/ENA 12 DME and hold, continue climb-in-hold to 3700.
---------------	---

AWOS-3P 135.45	ANCHORAGE CENTER 125.7 379.1	CTAF 122.5
--------------------------	--	----------------------



CATEGORY	A	B	C	D
C CIRCLING	1020-1¼ 907 (1000-1¼)		1020-2¾ 907 (1000-2¾)	1020-3 907 (1000-3)

AK, 31 DEC 2020 to 25 FEB 2021

AK, 31 DEC 2020 to 25 FEB 2021