

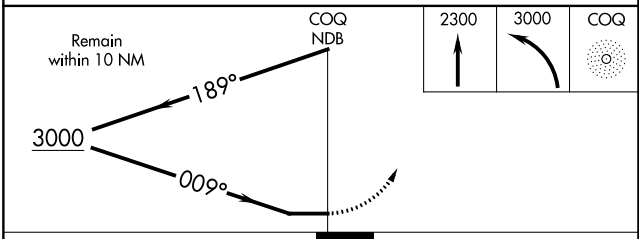
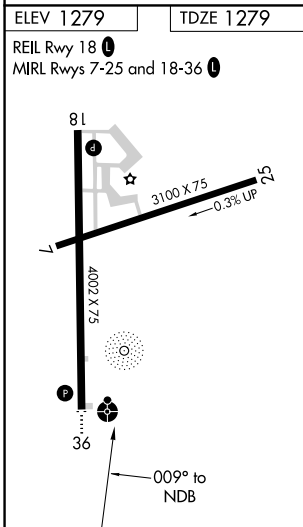
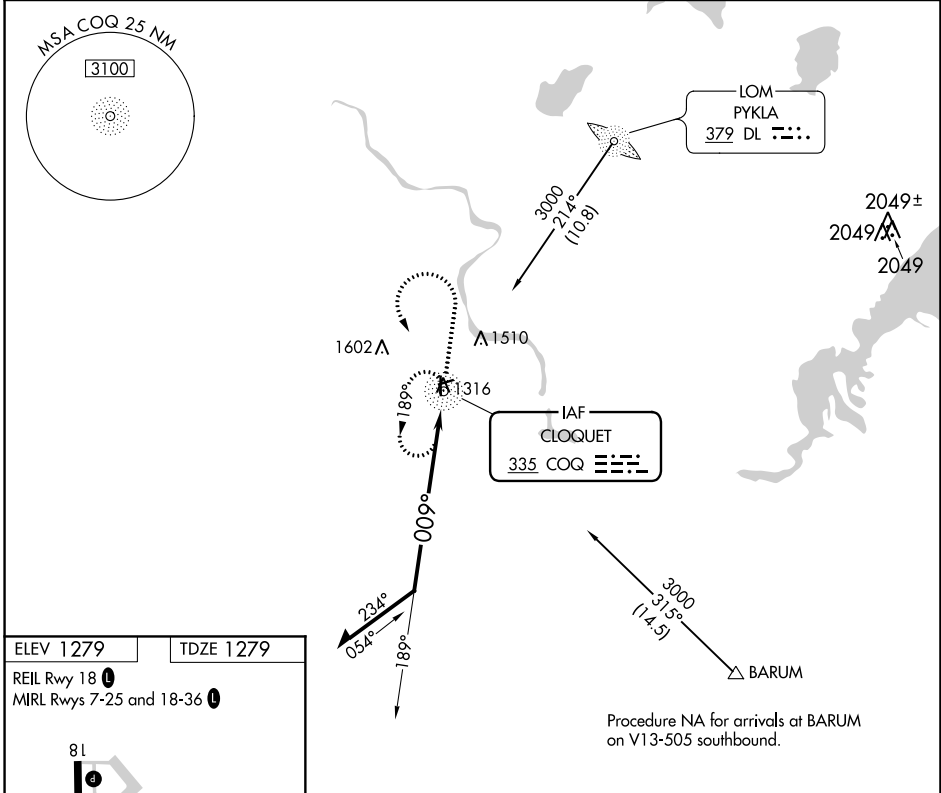
NDB COQ 335	APP CRS 009°	Rwy Idg TDZE Apt Elev	4002 1279 1279
-----------------------	------------------------	-----------------------------	---

NDB RWY 36

CLOQUET CARLTON COUNTY (COQ)

NA Inop table does not apply to S-36 Cat A/B. Circling Rwy 7, 25 NA at night.	ODALS 	MISSED APPROACH: Climb to 2300 then climbing left turn to 3000 direct COQ NDB and hold, continue climb-in-hold to 3000.	
	AWOS-3 118.525	DULUTH APP CON 125.45 233.7	CINC DEL 122.15

AWOS-3 118.525	DULUTH APP CON 125.45 233.7	CINC DEL 122.15	UNICOM 122.8 (CTAF)
--------------------------	---------------------------------------	---------------------------	-------------------------------



CATEGORY	A	B	C	D
S-36	1860-1	581 (600-1)	1860-1½ 581 (600-1½)	NA
CIRCLING	1860-1	581 (600-1)	1860-1¼ 581 (600-1¼)	NA

NC-1, 31 DEC 2020 to 28 JAN 2021

NC-1, 31 DEC 2020 to 28 JAN 2021