

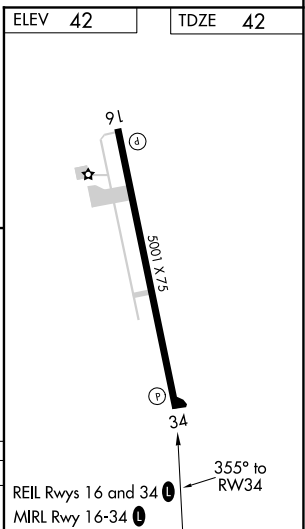
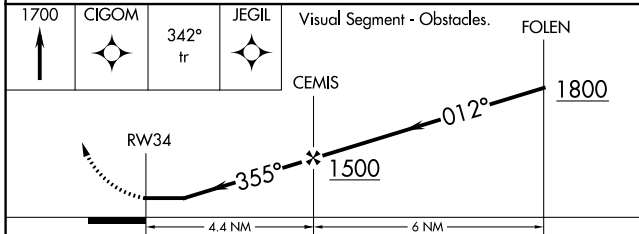
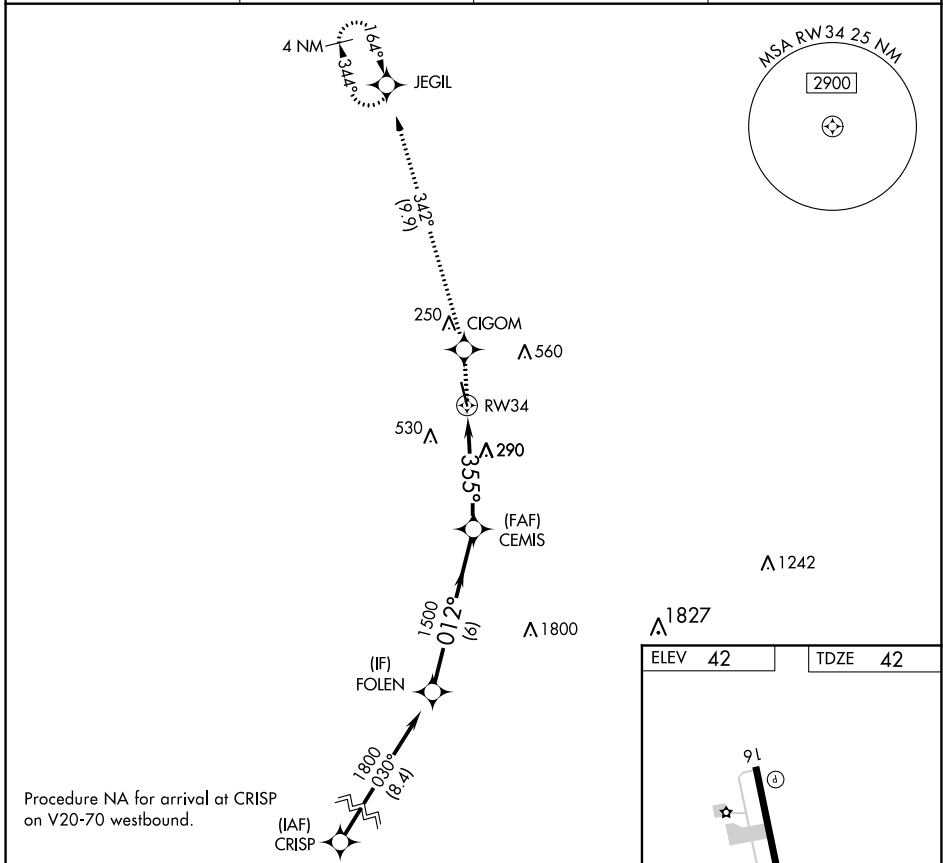
APP CRS 355°	Rwy Idg TDZE Apt Elev	5001 42 42
------------------------	-----------------------------	---------------------------------------

RNAV (GPS) RWY 34

EUNICE (4R7)

RNP APCH.	<p>▼ Procedure NA at night. Rwy 34 helicopter visibility reduction below 1 SM NA. Use Lafayette Rgnl/Paul Fournet Field altimeter setting.</p> <p>▲ MISSED APPROACH: Climb to 1700 direct CIGOM and on 342° track to JEGIL and hold.</p>
-----------	--

LFT ASOS 134.05	LAFAYETTE APP CON ★ 128.7 268.7	GCO 135.075	UNICOM 122.8 (CTAF) 0
---------------------------	---	-----------------------	---------------------------------



CATEGORY	A	B	C	D
LNAV MDA	660-1	618 (700-1)	660-1¾ 618 (700-1¾)	NA

SC-4, 31 DEC 2020 to 28 JAN 2021

SC-4, 31 DEC 2020 to 28 JAN 2021