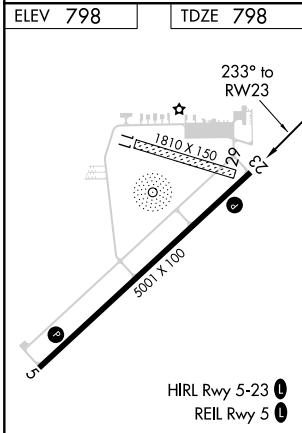
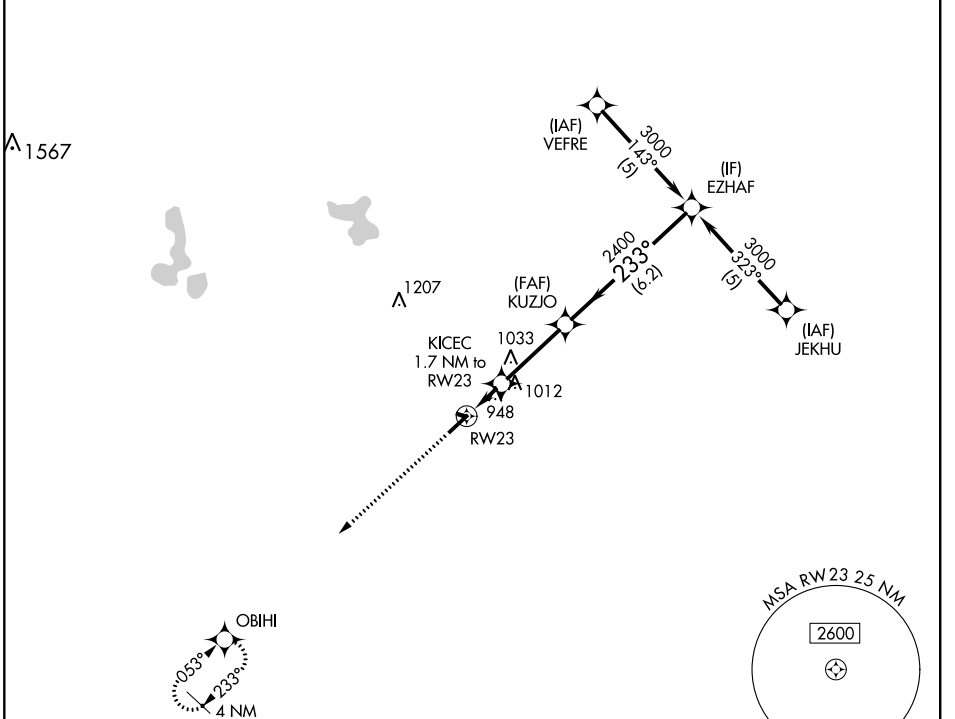


APP CRS 233°	Rwy Idg TDZE Apt Elev	5001 798 798
------------------------	-----------------------------	---

RNAV (GPS) RWY 23

LENAWEE COUNTY (ADG)

RNP APCH.		MISSED APPROACH: Climb to 3000 direct OBIHI and hold.
<p>▼ Rwy 23 helicopter visibility reduction below $\frac{3}{4}$ SM NA. DME/DME RNP-0.3 NA. ▲ When local altimeter setting not received, use Ann Arbor Muni altimeter setting: increase all MDAs 80 feet and visibility LNAV Cat C/D and Circling Cat C $\frac{1}{4}$ SM.</p>		
ASOS 118.375	TOLEDO APP CON 134.35 317.55	UNICOM 122.8 (CTAF) 0



ELEV 798	TDZE 798	<p>3000 OBIHI VGSI and descent angles not coincident (VGSI Angle 3.00/TCH 32).</p>			
		<p>EZHAF</p>			
CATEGORY	A	B	C	D	
LNAV MDA	1260-1	462 (500-1)	1260-1 $\frac{3}{8}$ 462 (500-1 $\frac{3}{8}$)	1260-1 $\frac{1}{2}$ 462 (500-1 $\frac{1}{2}$)	
CIRCLING	1300-1 502 (600-1)	1320-1 522 (600-1)	1320-1 $\frac{1}{2}$ 522 (600-1 $\frac{1}{2}$)	1380-2 582 (600-2)	

EC-1, 31 DEC 2020 to 28 JAN 2021

EC-1, 31 DEC 2020 to 28 JAN 2021