

VOR/DME OAB 109.8 Chan 35	APP CRS 118°	Rwy Idg TDZE Apt Elev N/A N/A 4590
---	------------------------	---

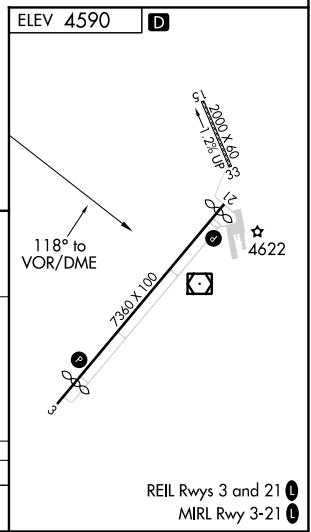
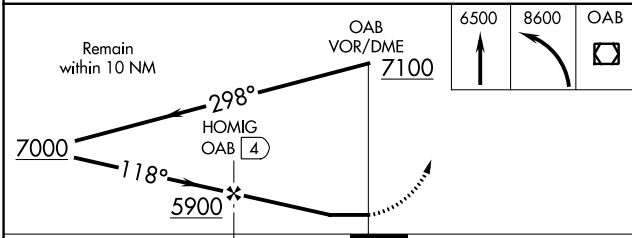
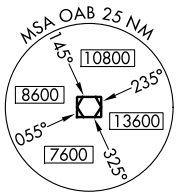
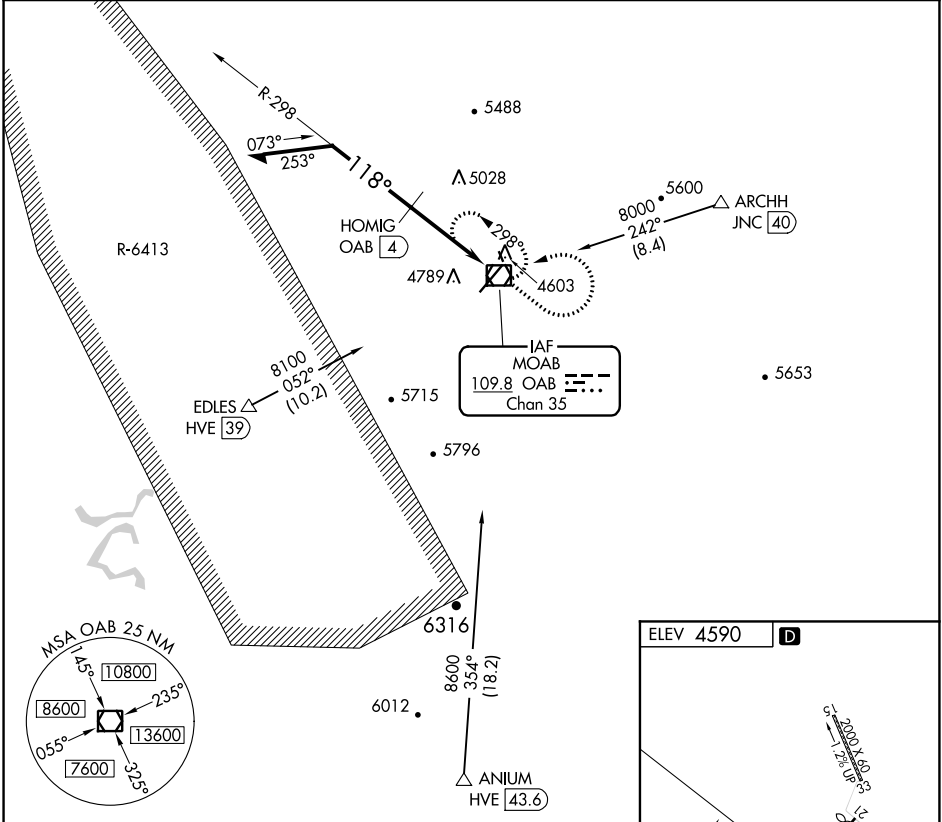
VOR-A
CANYONLANDS FIELD (CNY)

DME required.

⚠️ NA Circling NA to Rwys 15 and 33.
Procedure NA when R-6413 in operation.

MISSED APPROACH: Climb to 6500 then climbing left turn to 8600 direct OAB VOR/DME and hold, continue climb-in-hold to 8600.

ASOS 118.525	DENVER CENTER 134.5 327.8	UNICOM 122.8 (CTAF)
------------------------	-------------------------------------	-------------------------------



CATEGORY	A	B	C	D
C CIRCLING	5160-1 570 (600-1)	5200-1 610 (700-1)	5720-3 1130 (1200-3)	NA

REIL Rwys 3 and 21
MIRL Rwy 3-21

SW-4, 31 DEC 2020 to 28 JAN 2021

SW-4, 31 DEC 2020 to 28 JAN 2021