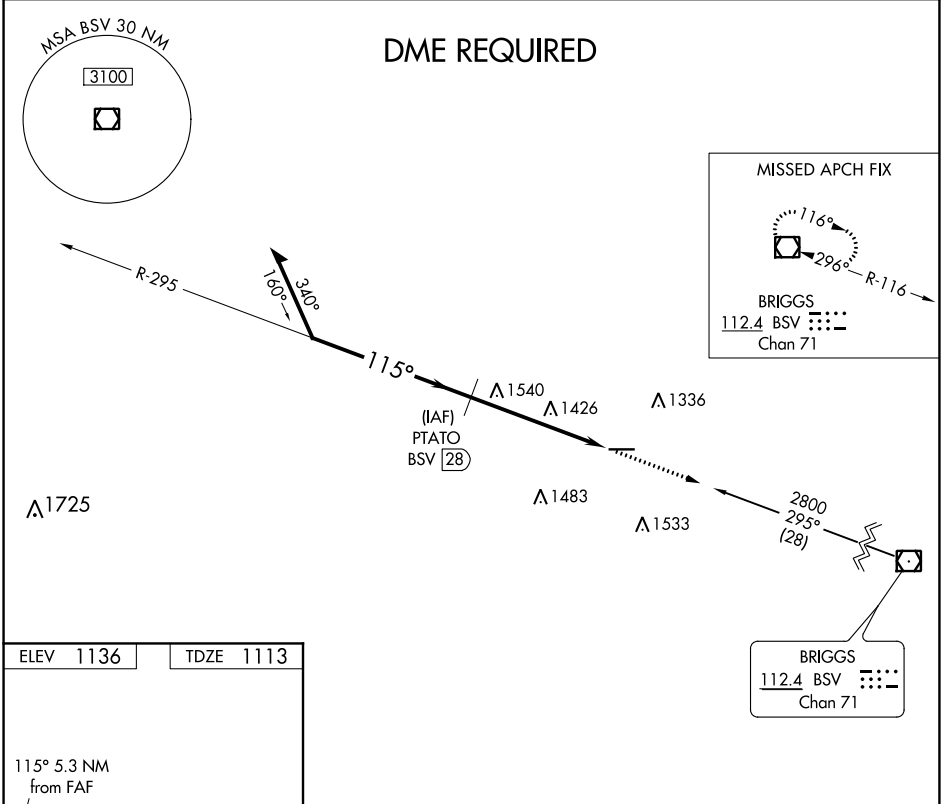


VOR/DME BSV 112.4 Chan 71	APP CRS 115°	Rwy Idg 5189 TDZE 1113 Apt Elev 1136
---	------------------------	---

VOR RWY 10
WAYNE COUNTY (BJJ)

▼ DME required. When local altimeter setting not received, use Akron-Canton Rgnl altimeter setting and increase all MDA 60 feet; increase S-10 Cat C/D and Circling Cat C/D visibilities ¼ mile. Rwy 10 helicopter visibility reduction below ¾ SM NA.
▲ MISSED APPROACH: Climb to 2800 direct BSV VOR/DME and hold.

ASOS 118.075	CLEVELAND APP CON * 118.6 371.875	CLNC DEL 121.75	UNICOM 122.8 (CTAF) 0
------------------------	---	---------------------------	---------------------------------



ELEV 1136	TDZE 1113
-----------	-----------

115° 5.3 NM from FAF

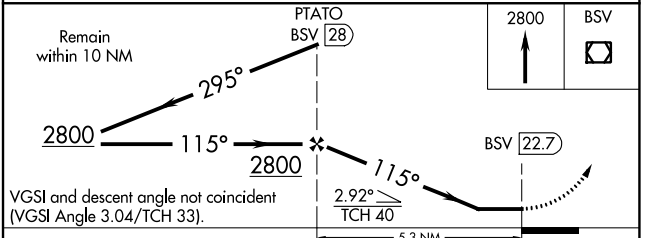
5189 X 100

0.5% UP

REIL Rwy 10 and 28
HIRL Rwy 10-28

FAF to MAP 5.3 NM

Knots	60	90	120	150	180
Min:Sec	5:18	3:32	2:39	2:07	1:46



CATEGORY	A	B	C	D
S-10	1840-1 727 (800-1)	1840-1 ¼ 727 (800-1 ¼)	1840-2 727 (800-2)	1840-2 ¼ 727 (800-2 ¼)
CIRCLING	1840-1 704 (800-1)	1840-1 ¼ 704 (800-1 ¼)	1840-2 704 (800-2)	1840-2 ¼ 704 (800-2 ¼)

EC-2, 31 DEC 2020 to 28 JAN 2021

EC-2, 31 DEC 2020 to 28 JAN 2021