

WAAS CH <b>50404</b> W18A	APP CRS <b>176°</b>	Rwy Idg TDZE Apt Elev	<b>4403</b> <b>914</b> <b>918</b>
---------------------------------	------------------------	-----------------------------	---

# RNAV (GPS) RWY 18

FORT SCOTT MUNI (F'SK)

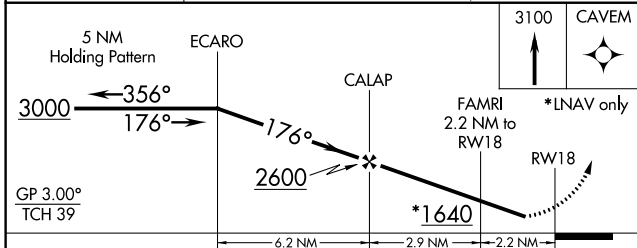
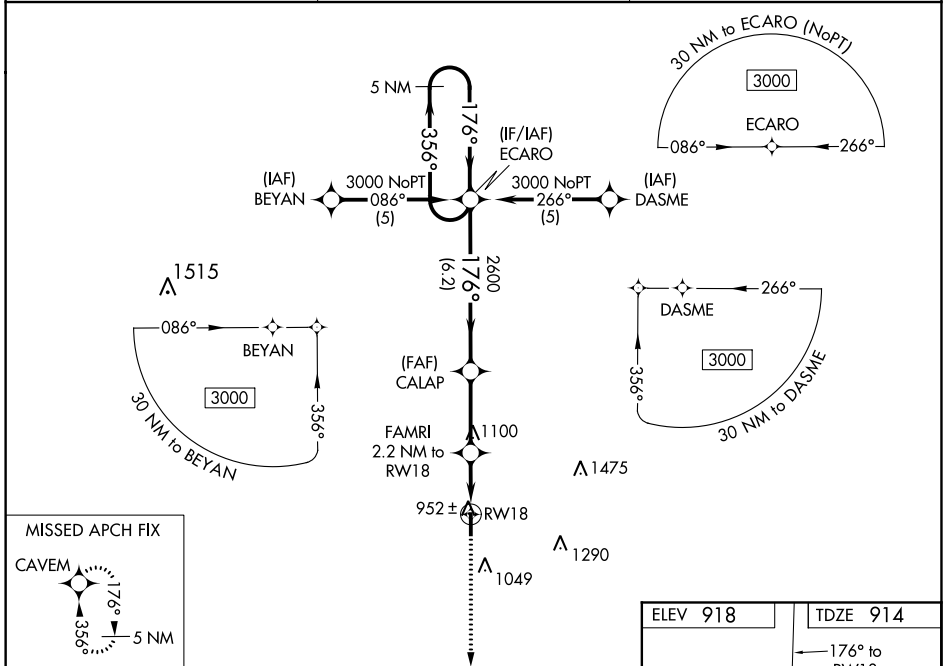
**NA** If local altimeter setting not received, use Chanute altimeter setting and increase all DAs 93 feet and all MDAs 100 feet. Baro-VNAV NA when using Chanute altimeter setting. For uncompensated Baro-VNAV systems, LNAV/VNAV NA below -16°C (4°F) or above 47°C (116°F). DME/DME RNP-0.3 NA. Visibility reduction by helicopters NA.

MISSED APPROACH: Climb to 3100 direct CAVEM and hold.

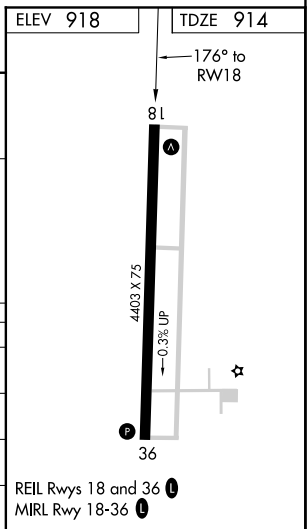
AWOS-3  
**124.425**

KANSAS CITY CENTER  
**125.55 327.0**

UNICOM  
**122.8 (CTAF) ①**



CATEGORY	A	B	C	D
LPV DA		1164-1	250 (300-1)	
LNAV/VNAV DA		1212-1	298 (300-1)	
LNAV MDA		1220-1	306 (400-1)	
CIRCLING	1280-1 362 (400-1)	1380-1 462 (500-1)	1380-1½ 462 (500-1½)	1480-2 562 (600-2)



NC-2, 31 DEC 2020 to 28 JAN 2021

NC-2, 31 DEC 2020 to 28 JAN 2021