

WAAS CH <b>56504</b> W <b>36A</b>	APP CRS <b>356°</b>	Rwy Idg TDZE Apt Elev	<b>4403</b> <b>918</b> <b>918</b>
---	------------------------	-----------------------------	---

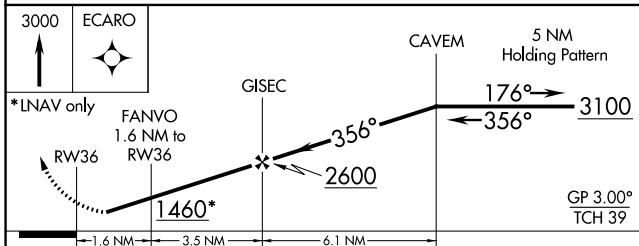
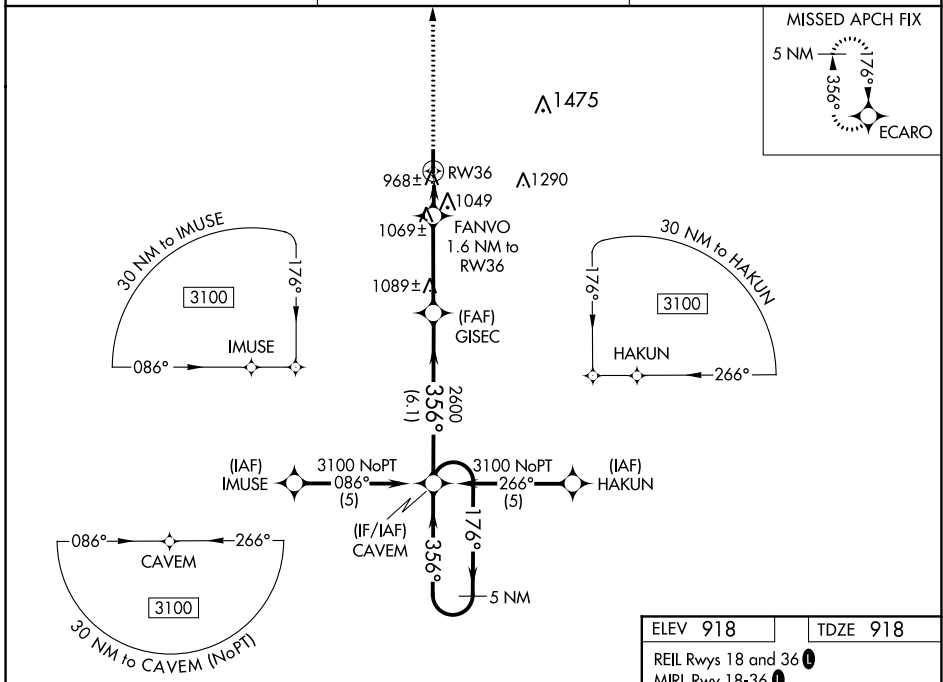
# RNAV (GPS) RWY 36

FORT SCOTT MUNI (F'SK)

**NA** If local altimeter setting not received, use Chanute altimeter setting and increase all DAs 93 feet and all MDAs 100 feet. Baro-VNAV NA when using Chanute altimeter setting. For uncompensated Baro-VNAV systems, LNAV/VNAV NA below -16°C (4°F) or above 47°C (116°F). DME/DME RNP-0.3 NA. Visibility reduction by helicopters NA.

MISSED APPROACH: Climb to 3000 direct ECARO and hold.

AWOS-3 <b>124.425</b>	KANSAS CITY CENTER <b>125.55 327.0</b>	UNICOM <b>122.8 (CTAF)</b>
--------------------------	---	-------------------------------



ELEV 918	TDZE 918
REIL Rwy 18 and 36	MIRL Rwy 18-36

CATEGORY	A	B	C	D
LPV DA	1189-1 271 (300-1)			
LNAV/VNAV DA	1240-1¼ 322 (400-1¼)			
LNAV MDA	1320-1 402 (500-1)	1320-1¼ 402 (500-1¼)		
CIRCLING	1320-1 402 (500-1)	1380-1 462 (500-1)	1380-1½ 462 (500-1½)	1480-2 562 (600-2)

NC-2, 31 DEC 2020 to 28 JAN 2021

NC-2, 31 DEC 2020 to 28 JAN 2021