

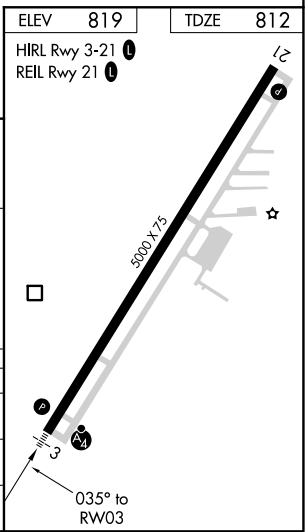
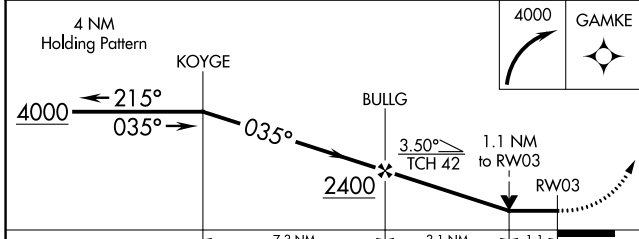
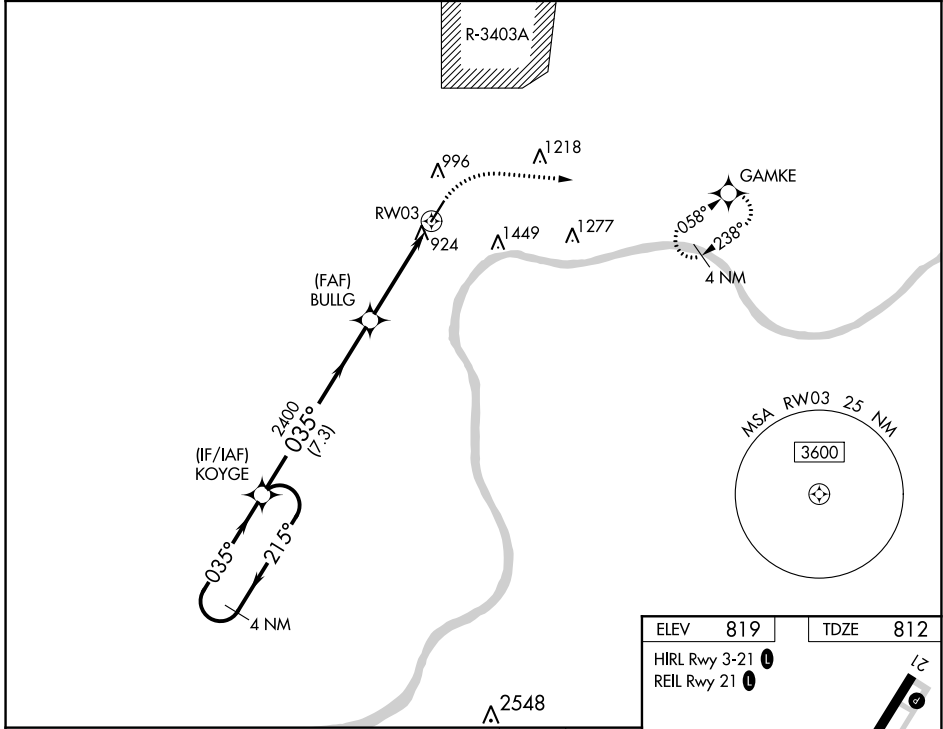
APP CRS <b>035°</b>	Rwy ldg TDZE Apt Elev	<b>5000</b> <b>812</b> <b>819</b>
------------------------	-----------------------------	---

# RNAV (GPS) Y RWY 3

MADISON MUNI (IMS)

<p><b>▽</b> DME/DME RNP-0.3 NA. Rwy 3 helicopter visibility reduction below ¾ SM NA. Rwy 21 helicopter visibility reduction below 1 SM NA. Circling Rwy 21 NA at night. For inoperative ALS increase **LNAV Cat C visibility to 1½ SM.</p>	<p><b>MALSF</b></p>	<p><b>MISSED APPROACH:</b> Climbing right turn to 4000 direct GAMKE and hold, continue climb-in-hold to 4000. **Missed approach requires minimum climb of 410 feet per NM to 1900.</p>
--	---------------------	--

<p>AWOS-3 <b>119.175</b></p>	<p>LOUISVILLE APP CON <b>132.075 327.0</b></p>	<p>UNICOM <b>123.0 (CTAF) 0</b></p>
----------------------------------	--	---



CATEGORY	A	B	C	D
LNAV MDA	1420-¾ 608 (700-¾)		1420-1½ 608 (700-1½)	NA
LNAV MDA**	1260-¾ 448 (500-¾)		1260-1 448 (500-1)	NA
<b>C</b> CIRCLING	1420-1 601 (700-1)		1800-3 981 (1000-3)	NA

EC-2, 31 DEC 2020 to 28 JAN 2021

EC-2, 31 DEC 2020 to 28 JAN 2021